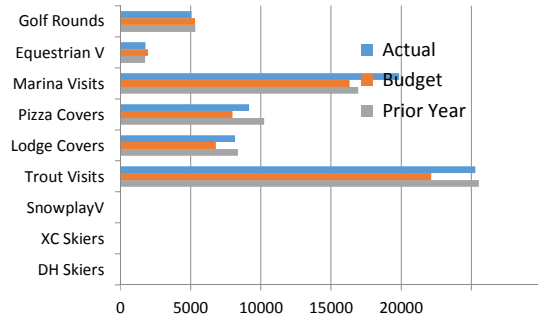
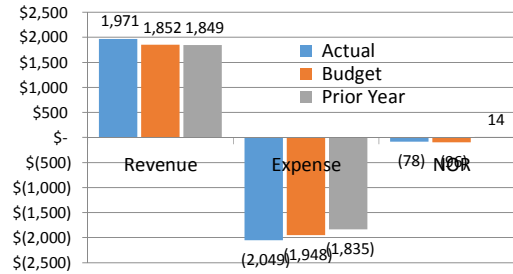




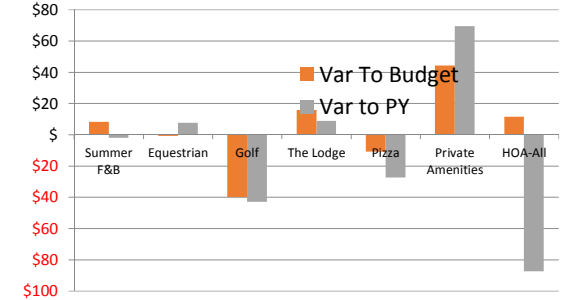
Month | Operating Volumes July 2017



Month | Operating Fund Results July 2017

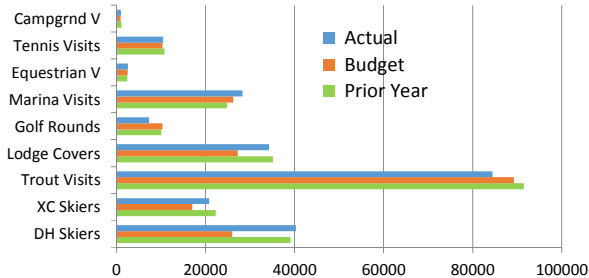


Month | Key NOR Variances July 2017

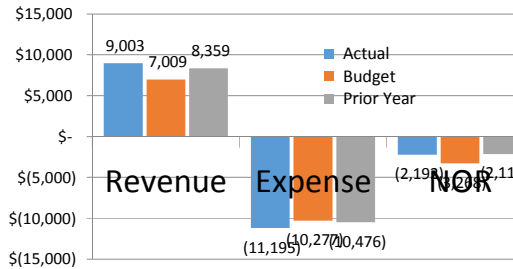


July Revenue: \$1,971,200 July NOR: -\$78,014
 118,777/6% fav to Bdg and 122,601/7% fav to PY 17,986/19% fav to Bdg and -92,108/-654% unfav to PY

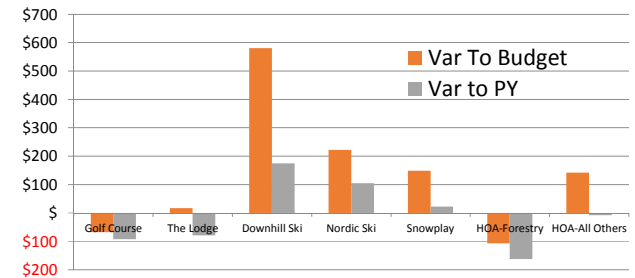
YTD | Volumes For the seven months ending July 2017



YTD | Operating Fund Results For the seven months ending July 2017

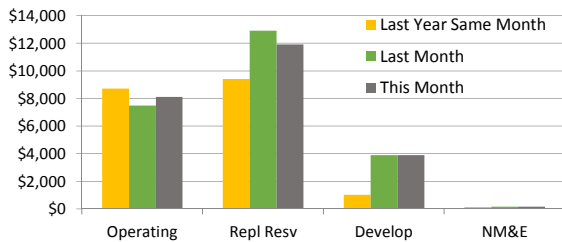


YTD | Key NOR Variances For the seven months ending July 2017

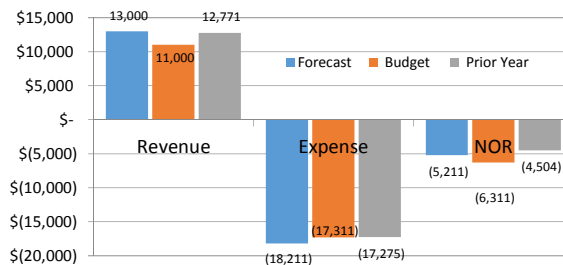


July YTD Revenue: \$9,002,818 July YTD NOR: -\$2,192,226
 1,993,682/28% fav to Bdg and 643,994/8% fav to PY 1,075,774/33% fav to Bdg and -75,186/-4% unfav to PY

Cash & Investments Balances, as of month end:

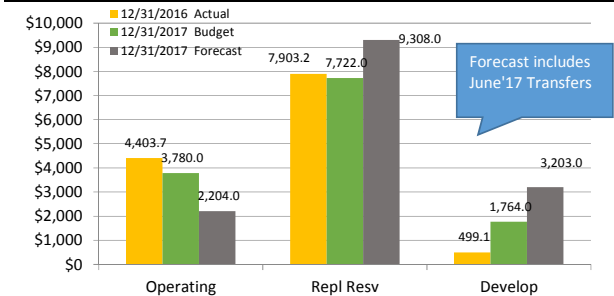


FORECAST ANNUAL 2017 Operating Fund | as of this report date



vs Budget: Revenue fav 2,000,000/18% | NOR fav 1,100,000/17%

Members Equity Balances as of Year End 12/31/xx



2017 Budget Metrics	TDA Revenue Mix		per Owner	Annual Assessment (AA)		AA Capital Contributions			Operating Fund Revenue Mix				
	AA Revenue	12,299,000		53%	975	51%	6,311,000	Operating Fund	595	64%	3,852,000 (31%)	ReplResv	6,311,000(36%)
Operating Rev	11,000,000	47%	925	49%	5,988,000	Capital Funds	30	3%	194,000 (2%)	New Equip	11,000,000(64%)	Op Rev	
Total Revenue	23,299,000	100%	1900	100%	12,299,000	Annual Assesm TL	300	32%	1,942,000 (16%)	DevelopFd	17,311,000(100%)	Total	
\$23.3 Million Revenue Requirement / Budget			an increase from 2016 of \$0 or 0%			925			100%	5,988,000 (49%)	TL, Cap Fds		