

# INFORMATION



December 16, 2017

**Purpose:** Board update regarding the proposed Snowbird Lift replacement at TDA's Downhill Ski Resort.

**Background:** Built in 1970, the Snowbird Lift currently operates a series of fixed-grip, two-seat chairs, accessing mostly moderate terrain for member and public skiers that possess Level 4 abilities and up. As detailed in the attached 2013 Planning Document, the Snowbird Lift is now beyond its useful life, has the uphill capacity of 900 skiers per hour, but is deliberately run at reduced speeds to maximize beginner experience and user safety.

In January of 2017 the Tahoe region experienced several power fluctuations and outages. During one of these events, the drive for Snowbird Lift lost a link card which stores parameters for the drive to function properly. The drive was last replaced in 1995, and locating a replacement link card and software to reload the parameters proved to be a challenging task, as the original manufacturer is no longer in business. Fortunately, Ski Area management located a link card and necessary software, then coordinated with a distant programmer so that the Lift could be repaired and be made operational without losing further revenue during the upcoming MLK weekend.

On June 23<sup>rd</sup>, the Tahoe Donner Board of Directors voted unanimously to approve funding for a Snowbird Lift replacement, and with continued support from the Finance and General Plan Committees, the Board voted on October 28<sup>th</sup> to use Replacement Reserve Funds to replace the Snowbird Lift in 2018. In response, Staff has obtained bids Doppelmayr and SkyTrac, including preview of any available and qualified second-hand units. The GPC Chairman also provided additional metrics on the importance of replacing the existing Snowbird Lift during the November 18<sup>th</sup> Board update. ECOsign is simultaneously underway with a master plan report for the Downhill Ski Area, which includes Lift capacity and alignment options that aim to improve skier circulation, efficient access to learning center, and overall guest safety. The Lift alignment and project scope details are attached.

With the Board's approval to proceed with a new Snowbird Lift at the January 2018 Board meeting, Staff will proceed with ordering necessary Lift components with sufficient lead-time for installation during the following summer months, allowing for testing and staff training ahead of the 2018 winter operations.

## **Discussion:**

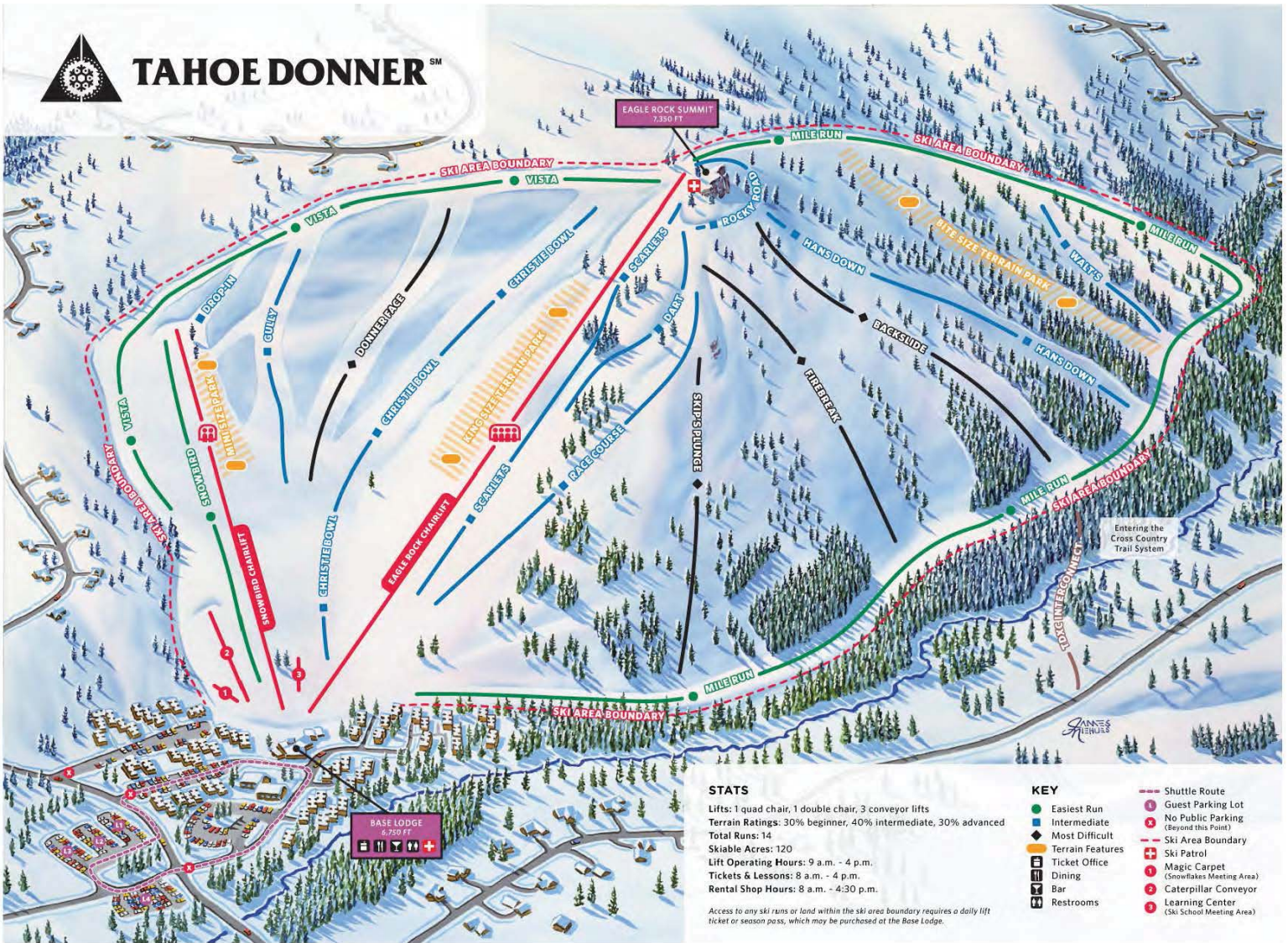
- Current and proposed Lift alignment with preliminary project schedule and costs
- TDA Staff asks the Board of Directors for direction leading up to a January decision

---

**Prepared By:** Forrest Huisman, Director of Capital Projects



# TAHOE DONNER<sup>SM</sup>



### STATS

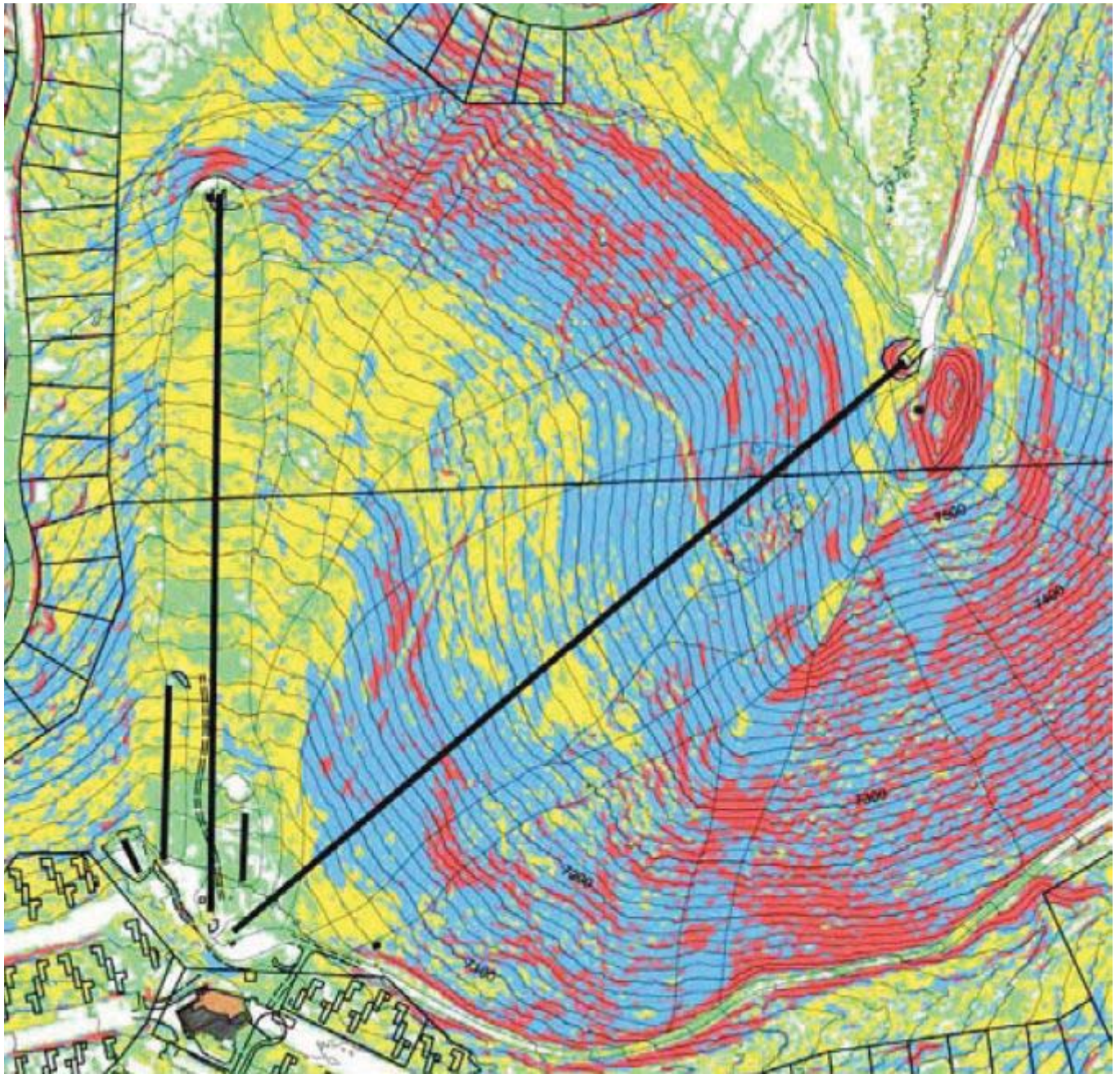
Lifts: 1 quad chair, 1 double chair, 3 conveyor lifts  
 Terrain Ratings: 30% beginner, 40% intermediate, 30% advanced  
 Total Runs: 14  
 Skiable Acres: 120  
 Lift Operating Hours: 9 a.m. - 4 p.m.  
 Tickets & Lessons: 8 a.m. - 4 p.m.  
 Rental Shop Hours: 8 a.m. - 4:30 p.m.

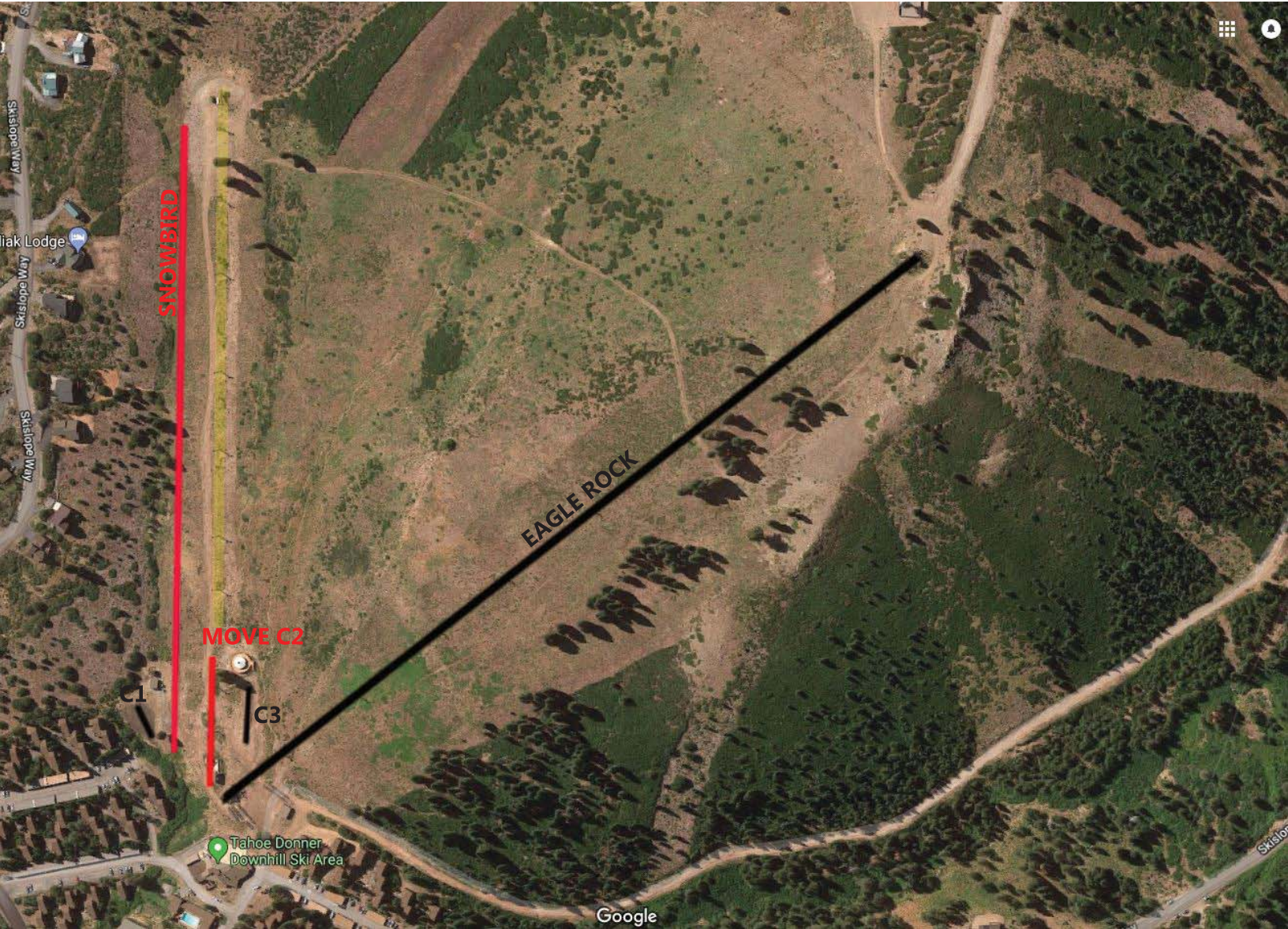
Access to any ski runs or land within the ski area boundary requires a daily lift ticket or season pass, which may be purchased at the Base Lodge.

### KEY

- Easiest Run
- Intermediate
- ◆ Most Difficult
- Terrain Features
- Ski Area Boundary
- + Ski Patrol
- 1 Magic Carpet (Snowflakes Meeting Area)
- 2 Caterpillar Conveyor
- 3 Learning Center (Ski School Meeting Area)
- Shuttle Route
- P Guest Parking Lot
- X No Public Parking (Beyond this Point)
- Ski Area Boundary
- + Ski Patrol
- 1 Magic Carpet (Snowflakes Meeting Area)
- 2 Caterpillar Conveyor
- 3 Learning Center (Ski School Meeting Area)









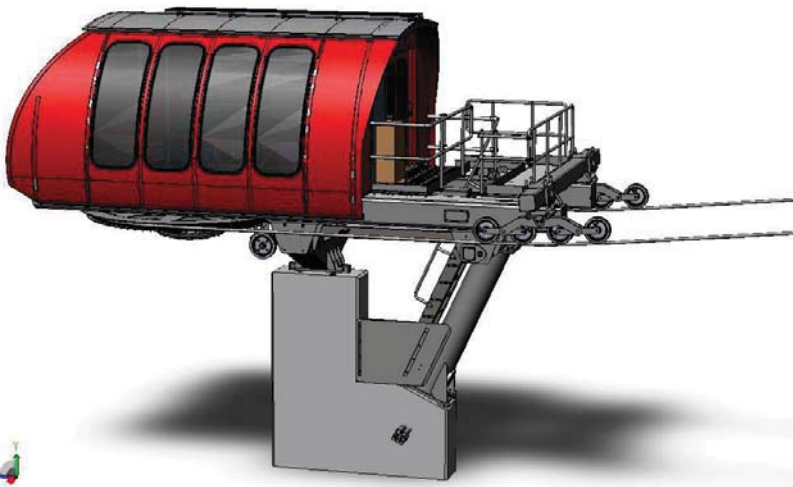




Aerial Transportation Systems

# 2017

## Chair Lift Quote



### **Tahoe Donner**

**Snowbird Lift Replacement  
Fixed Grip Triple Lift  
Truckee, CA**

Carl Skylling

Skytrac Services, Inc.

7/12/2017





## Considerations for a Fixed-grip, Triple-chair

- A lighter chair has less swing speed during skier unload, which eliminates the need for a steeper exit ramp (like installed at Eagle Rock), providing a safer and superior learning experience for beginner skiers.
- Ski-school instructors can efficiently manage one student on either side during loading and unload.
- Easier for lift ops to operate due to the heaviness of the chair.
- A triple-chair may be able to move just as many guests per hour as a quad-chair, because quad chairs have slightly greater spacing on the cable to keep total skier weight the same and within engineering maximums.
- Per ECOsign's recommendation, a detachable quad may move more people, but neither the existing slope capacity or chairlift length warrant the increased upfront expense and ongoing maintenance costs that are associated with detachable technologies.
- Maintenance tasks are efficient.
- Northstar's Big Easy Lift accesses some of their best learning terrain, and although it was originally installed as a fixed-quad, they've upgraded to a Triple Chair for improved Ski-school experience.

**“Kid Stops” U-Block System from Leitner-Poma of America also available.**





## Conveyor Belt- children's skiing land

The Sunkid conveyor belt in its original function: as a climbing aid in skiing lessons for children





**TAHOE DONNER**



**DOWNHILL  
SKI AREA**

**T.D. LODGE CONDO ASSOC**

**SKI BOWL CONDO ASSOC**

ID	Task Name	Start	Finish	May	June	July	August	September	October	November	December	January	February	March	April	May	June	July	August	September	October
1	<b>Timeline for Snowbird Chair Replacement</b>	Mon 7/10/17	Sat 7/28/18																		
2	<b>Project Tasks</b>	Mon 10/2/17	Sat 7/28/18																		
3	Procure pricing estimates from Doppelmayr	Tue 8/1/17	Wed 11/15/17																		
4	Pricing estimates from SkyTrac	Tue 8/1/17	Wed 11/15/17																		
5	Review available second-hand units	Wed 11/15/17	Fri 12/15/17																		
6	GPC Discussion on Snowbird replacement	Mon 12/4/17	Mon 12/4/17																		
7	Member Communication	Mon 12/11/17	Fri 1/19/18																		
8	Board Discussion on Snowbird replacement	Sat 12/16/17	Sat 12/16/17																		
9	GPC update for Board Action	Mon 1/8/18	Mon 1/8/18																		
10	Board Action on Snowbird replacement	Sat 1/20/18	Sat 1/20/18																		
11	Chairlift Vendor contract signed	Thu 2/1/18	Thu 2/1/18																		
12	Chairlift Manufacturing Lead-time	Thu 2/1/18	Mon 4/30/18																		
13	Contractor Mobilizes for Removal	Tue 5/1/18	Fri 6/29/18																		
14	Chairlift Deliveries arrive	Mon 7/2/18	Fri 7/13/18																		
15	Installation of Chairlift	Mon 7/16/18	Sun 9/30/18																		
16	Chairlift Testing and Training	Mon 10/1/18	Fri 12/7/18																		
17	New Snowbird Operational	Sat 12/8/18	Mon 12/31/18																		





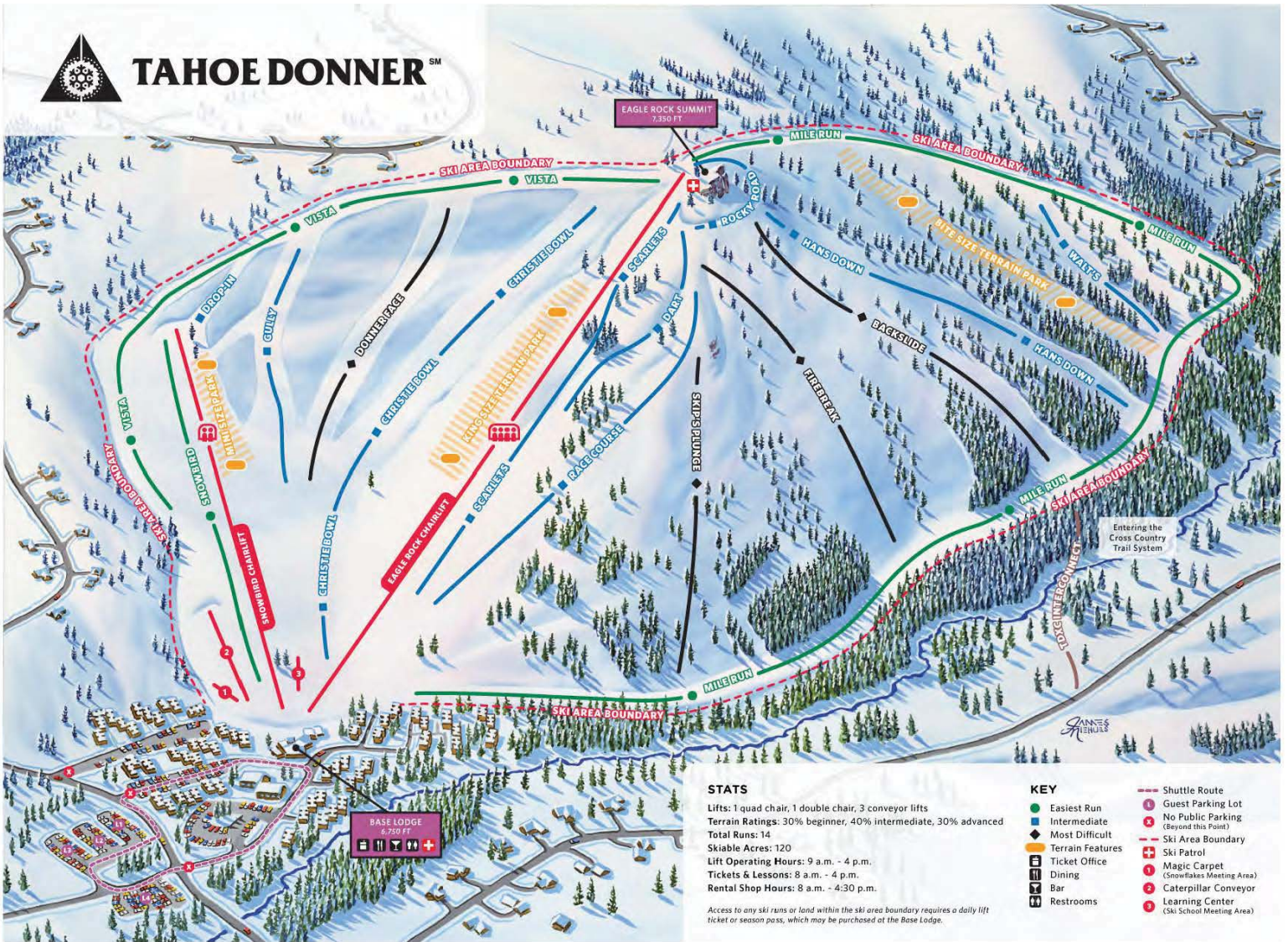








# TAHOE DONNER<sup>SM</sup>



### STATS

Lifts: 1 quad chair, 1 double chair, 3 conveyor lifts  
 Terrain Ratings: 30% beginner, 40% intermediate, 30% advanced  
 Total Runs: 14  
 Skiable Acres: 120  
 Lift Operating Hours: 9 a.m. - 4 p.m.  
 Tickets & Lessons: 8 a.m. - 4 p.m.  
 Rental Shop Hours: 8 a.m. - 4:30 p.m.

Access to any ski runs or land within the ski area boundary requires a daily lift ticket or season pass, which may be purchased at the Base Lodge.

### KEY

- Easiest Run
- Intermediate
- Most Difficult
- Terrain Features
- Ticket Office
- Dining
- Bar
- Restrooms
- Shuttle Route
- P Guest Parking Lot
- X No Public Parking (Beyond this Point)
- Ski Area Boundary
- + Ski Patrol
- M Magic Carpet (Snowflakes Meeting Area)
- C Caterpillar Conveyor
- L Learning Center (Ski School Meeting Area)