

SEE SHEET - 7

SEE SHEET - 6

NOTES:

- 1. 3/4" ROD SET AT ALL EXTERIOR ANGLE POINTS, TAGGED R.C.E. 13309
- 2. 3/4" ROD SET AT ALL INTERIOR LOT CORNERS & ANGLE POINTS, TAGGED R.C.E. 13309
- 3. BASIS OF BEARINGS AS SHOWN ON SHEET 1 OF 11 SHEETS
- 4. N.A.P.O.T.S. - NOT A PART OF THIS SUBDIVISION
- 5. SET 2" PIPE, TAGGED R.C.E. 13309
- 6. INDICATES UNSET CURVE POINT
- 7. SET RAILROAD SPIKE AFTER PAVING
- 8. INDICATES 3/4" ROD SET ON CURVE POINT, TAGGED R.C.E. 13309

TALHOE DONNER UNIT - 5

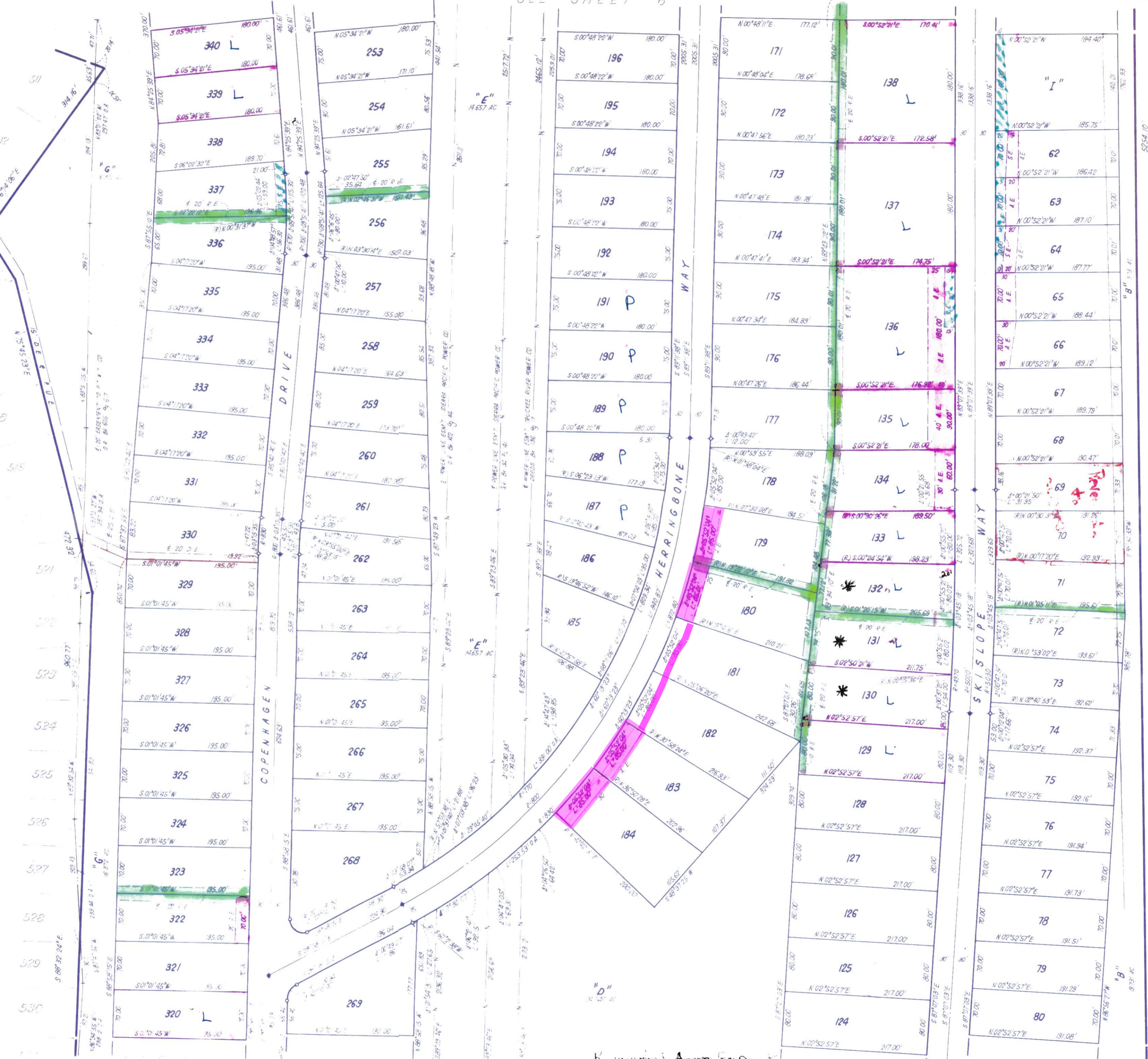
MAPS SUBDIVISIONS Book 4 Page 27

NOTE: ALL MONUMENTS COMMON TO UNIT-4 ARE TO BE REMOVED AND RE-SET TO R.C.E. 13309

TALHOE DONNER UNIT-5

BEING A PORTION OF
SECTION 5, 6, 7, & 8, T.17N., R.16E., M. D. M.
IN THE UNINCORPORATED TERRITORY OF
NEVADA COUNTY, CALIFORNIA
SCALE 1"=100'

CRANMER ENGINEERING, INC.



TALHOE DONNER UNIT - 5

S. 88° 34' 33" W

L.G.W.

F-5

Revised Access Easement

SEE SHEET 4