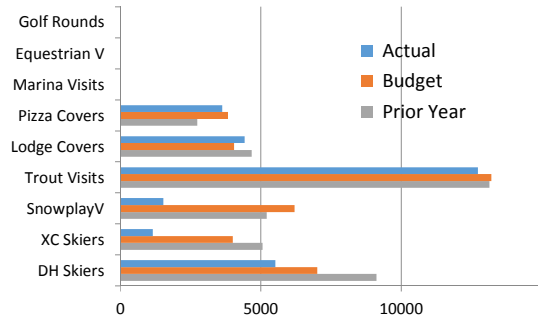
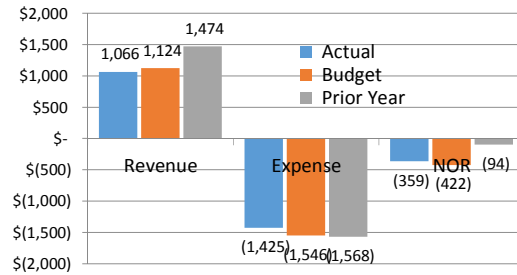




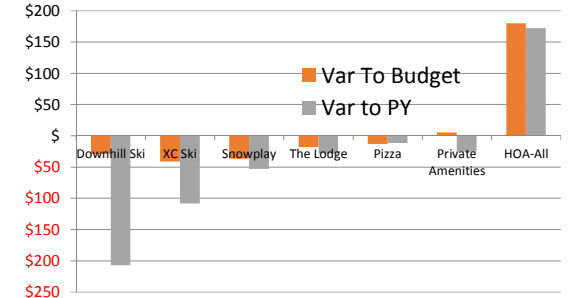
Month | Operating Volumes December 2017



Month | Operating Fund Results December 2017



Month | Key NOR Variances December 2017



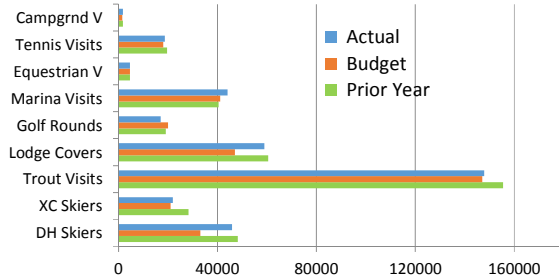
December Revenue: \$1,065,670

December NOR: -\$359,346

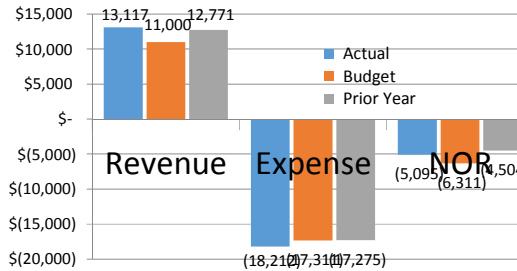
-58,511/-5% unfav to Bdg and -408,717/-28% unfav to PY

62,654/15% fav to Bdg and -265,577/-283% unfav to PY

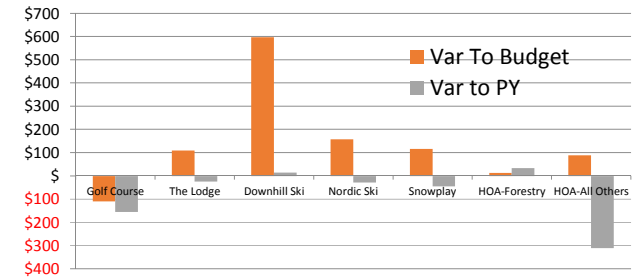
YTD | Volumes For the twelve months ending December 2017



YTD | Operating Fund Results For the twelve months ending December 2017



YTD | Key NOR Variances For the twelve months ending December 2017



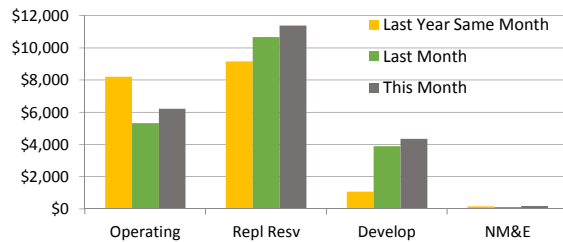
December YTD Revenue: \$13,116,560

December YTD NOR: -\$5,095,270

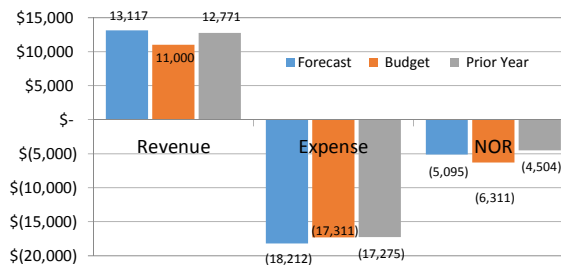
2,116,560/19% unfav to Bdg and 345,528/3% fav to PY

1,215,730/19% fav to Bdg and -591,660/-13% unfav to PY

Cash & Investments Balances, as of month end:

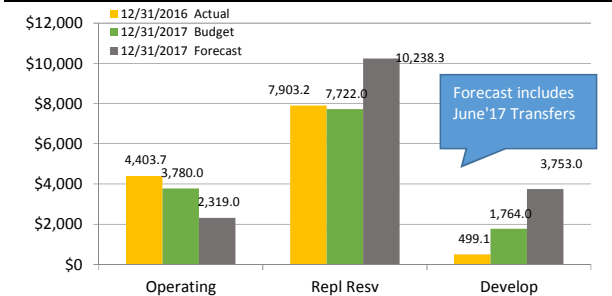


FORECAST ANNUAL 2017 Operating Fund | as of this report date



vs Budget: Revenue fav 2,116,560/19% | NOR fav 1,215,730/19%

Members Equity Balances as of Year End 12/31/xx



2017 Budget Metrics	TDA Revenue Mix		per Owner	Annual Assessment (AA)		AA Capital Contributions			Operating Fund Revenue Mix				
	AA Revenue	12,299,000		53%	975	51%	6,311,000	Operating Fund	595	64%	3,852,000 (31%)	ReplResv	6,311,000(36%)
Operating Rev	11,000,000	47%	925	49%	5,988,000	Capital Funds	30	3%	194,000 (2%)	New Equip	11,000,000(64%)	Op Rev	
Total Revenue	23,299,000	100%	1900	100%	12,299,000	Annual Assesm TL	300	32%	1,942,000 (16%)	DevelopFd	17,311,000(100%)	Total	
\$23.3 Million Revenue Requirement / Budget			an increase from 2016 of \$0 or 0%			925			100%	5,988,000 (49%)	TL, Cap Fds		