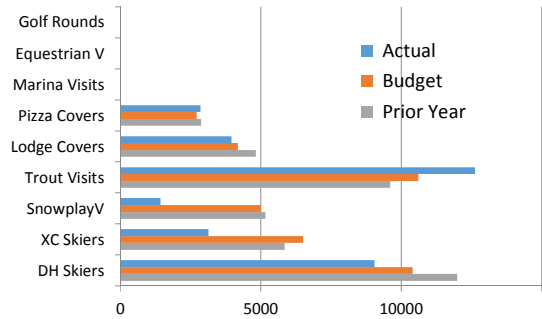
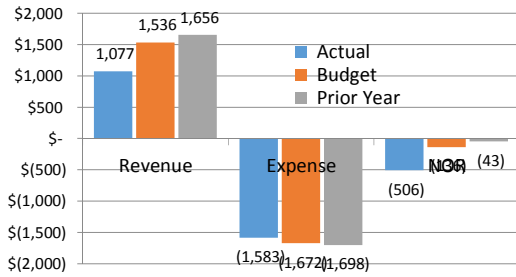




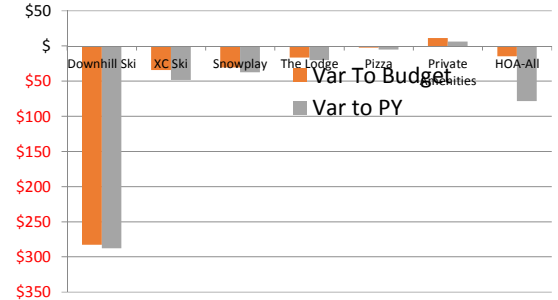
Month | Operating Volumes January 2018



Month | Operating Fund Results January 2018



Month | Key NOR Variances January 2018



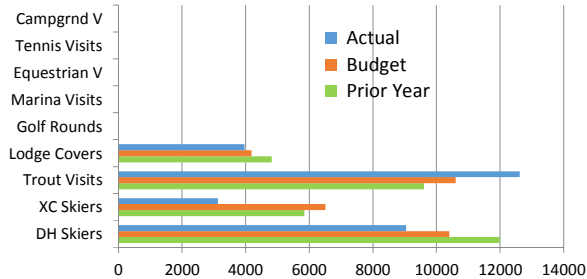
January Revenue: \$1,077,210

-458,790/-30% unfav to Bdg and -578,446/-35% unfav to PY

January NOR: -\$505,717

-369,717/-272% unfav to Bdg and -463,146/-1088% unfav to PY

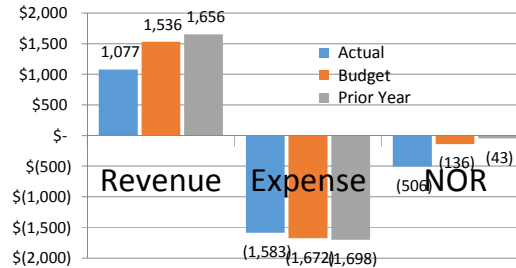
YTD | Volumes For the one month ending January 2018



January YTD Revenue: \$1,077,210

-458,790/-30% unfav to Bdg and -578,446/-35% unfav to PY

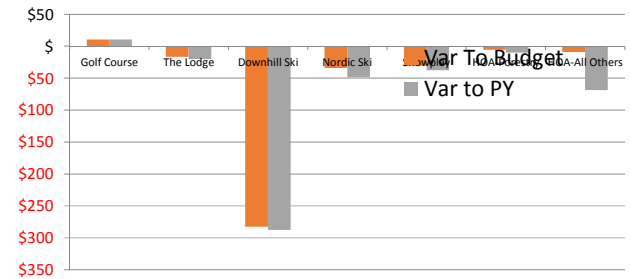
YTD | Operating Fund Results For the one month ending January 2018



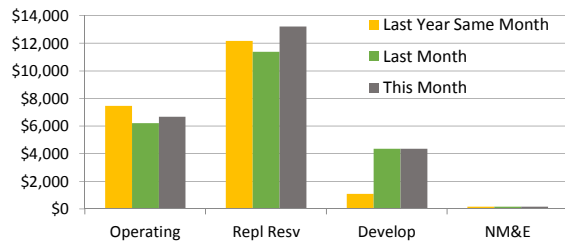
January YTD NOR: -\$505,717

-369,717/-272% unfav to Bdg and -463,146/-1088% unfav to PY

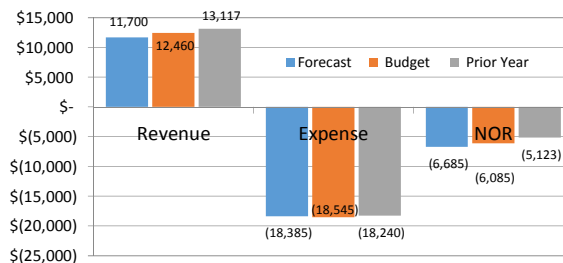
YTD | Key NOR Variances For the one month ending January 2018



Cash & Investments Balances, as of month end:

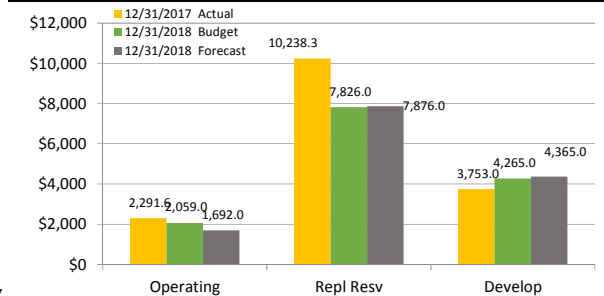


FORECAST ANNUAL 2018 Operating Fund | as of this report date



vs Budget: Revenue unfav -760,000/-6% | NOR unfav -600,000/-10%

Members Equity Balances as of Year End 12/31/xx



2018 Budget Metrics	TDA Revenue Mix		per Owner	Annual Assessment (AA)		AA Capital Contributions			Operating Fund Revenue Mix				
	Revenue	Percentage		Revenue	Percentage	Revenue	Percentage	Revenue	Percentage				
AA Revenue	12,299,000	50%	940	49%	6,085,000	Operating Fund	620	65%	4,013,000 (33%)	ReplResv	6,085,000(33%)	AA Rev	
Operating Rev	12,460,000	50%	960	51%	6,214,000	Capital Funds	30	3%	194,000 (2%)	New Equip	12,460,000(67%)	Op Rev	
Total Revenue	24,759,000	100%	1900	100%	12,299,000	Annual Assesm TL	310	32%	2,007,000 (16%)	DevelopFd	18,545,000(100%)	Total	
\$23.3 Million Revenue Requirement / Budget			an increase from 2016 of \$0 or 0% same as 2015 in total as well			960			100%	6,214,000 (51%)	TL, Cap Fds		