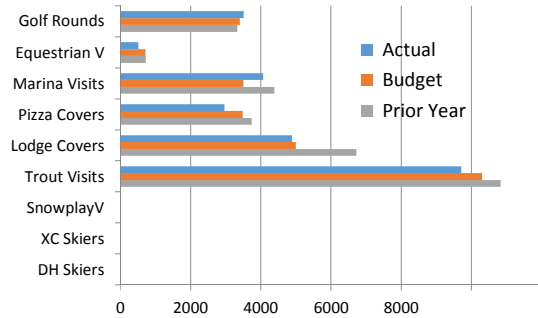
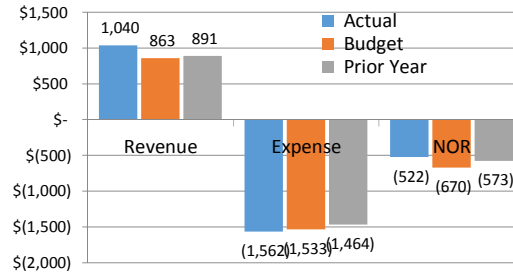




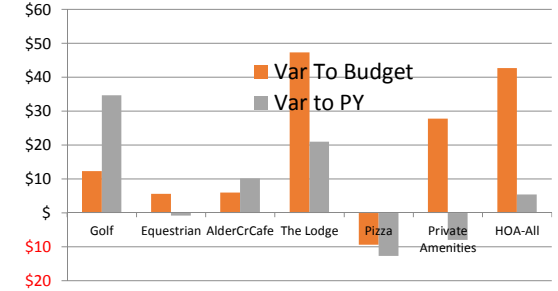
Month | Operating Volumes September 2018



Month | Operating Fund Results September 2018



Month | Key NOR Variances September 2018



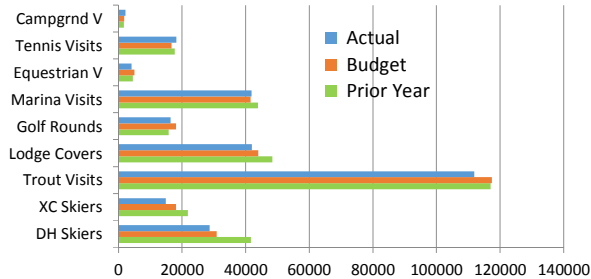
September Revenue: \$1,039,983

September NOR: -\$521,665

176,983/21% fav to Bdg and 149,132/17% fav to PY

148,335/22% fav to Bdg and 51,137/9% fav to PY

YTD | Volumes For the nine months ending September 2018



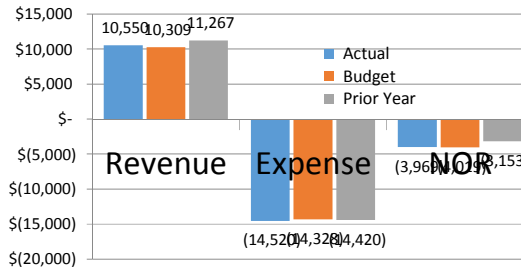
September YTD Revenue: \$10,550,283

September YTD NOR: -\$3,969,236

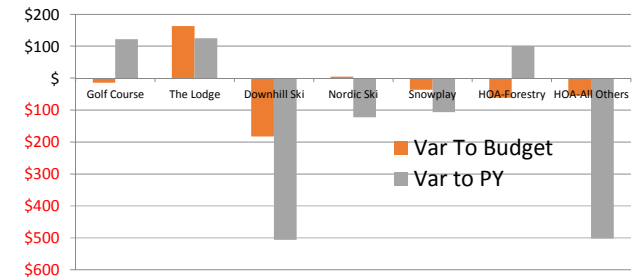
241,283/2% fav to Bdg and -717,003/-6% unfav to PY

49,764/1% fav to Bdg and -816,284/-26% unfav to PY

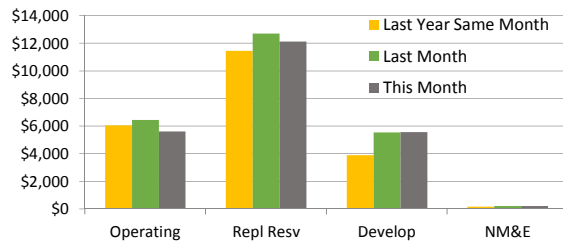
YTD | Operating Fund Results For the nine months ending September 2018



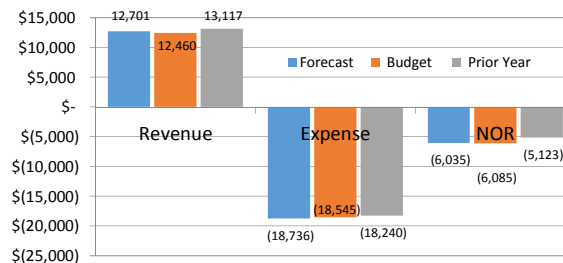
YTD | Key NOR Variances For the nine months ending September 2018



Cash & Investments Balances, as of month end:

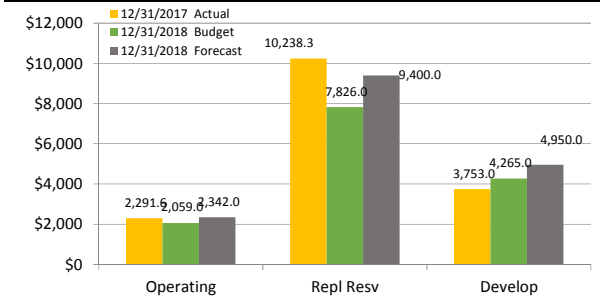


FORECAST ANNUAL 2018 Operating Fund | as of this report date



vs Budget: Revenue Fav 241,000/2% | NOR Fav 50,000/1%

Members Equity Balances as of Year End 12/31/xx



2018 Budget Metrics	TDA Revenue Mix		per Owner	Annual Assessment (AA)		AA Capital Contributions			Operating Fund Revenue Mix				
	AA Revenue	12,299,000		50%	940	49%	6,085,000	Operating Fund	620	65%	4,013,000 (33%)	ReplResv	6,085,000(33%)
Operating Rev	12,460,000	50%	960	51%	6,214,000	Capital Funds	30	3%	194,000 (2%)	New Equip	12,460,000(67%)	Op Rev	
Total Revenue	24,759,000	100%	1900	100%	12,299,000	Annual Assesm TL	310	32%	2,007,000 (16%)	DevelopFd	18,545,000(100%)	Total	
\$23.3 Million Revenue Requirement / Budget			an increase from 2016 of \$0 or 0% same as 2015 in total as well			960			100%	6,214,000 (51%)	TL, Cap Fds		