



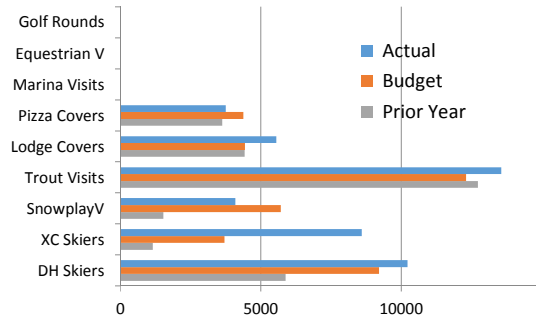
Dollars in Thousands

Dashboard Report 1

December 2018

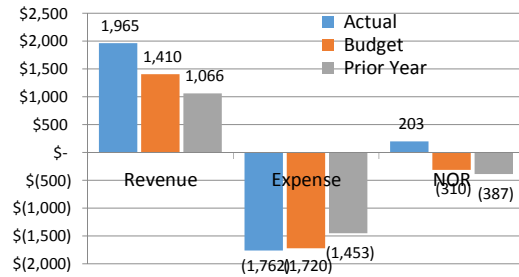
Month | Operating Volumes

December 2018



Month | Operating Fund Results

December 2018



December Revenue: \$1,964,838

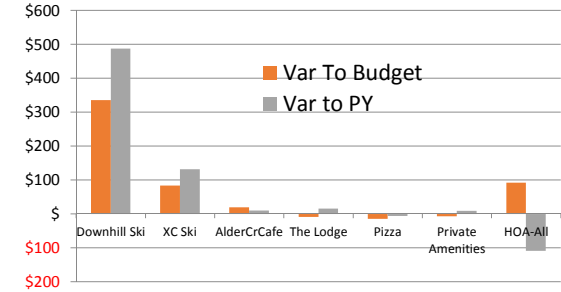
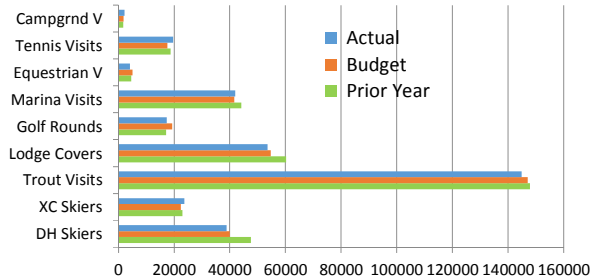
554,838/39% fav to Bdg and 899,169/84% fav to PY

December NOR: \$203,147

513,147/166% fav to Bdg and 590,078/153% fav to PY

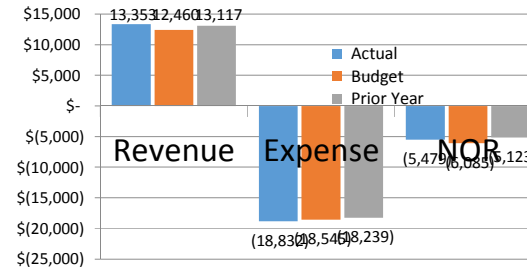
Month | Key NOR Variances

December 2018

YTD | Volumes
For the twelve months ending December 2018

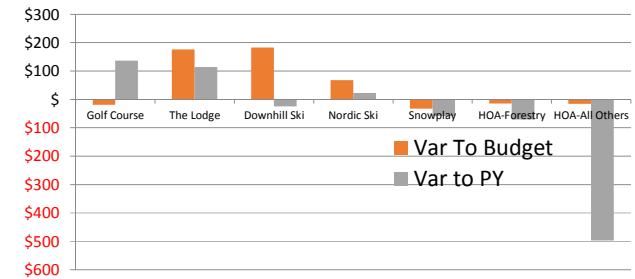
December YTD Revenue: \$13,353,046

893,046/7% fav to Bdg and 236,486/2% fav to PY

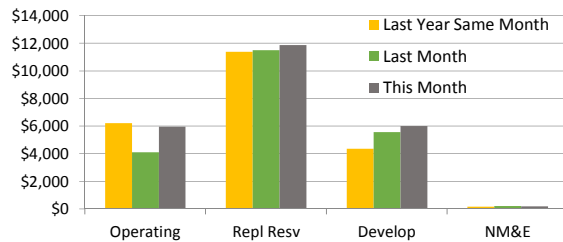
YTD | Operating Fund Results
For the twelve months ending December 2018

December YTD NOR: -\$5,479,366

605,634/10% fav to Bdg and -356,511/-7% unfav to PY

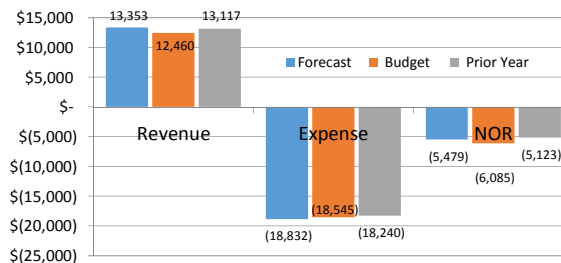
YTD | Key NOR Variances
For the twelve months ending December 2018

Cash & Investments Balances, as of month end:



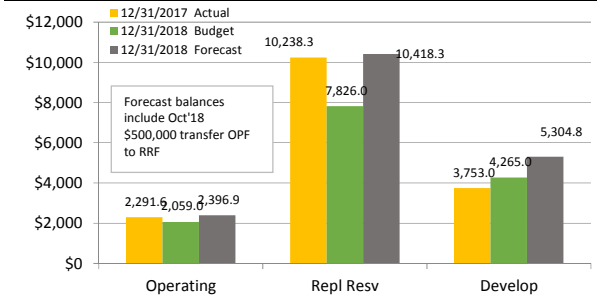
FORECAST ANNUAL 2018

Operating Fund | as of this report date



vs Budget: Revenue Fav 893,000/7% | NOR Fav 606,000/10%

Members Equity Balances as of Year End 12/31/xx



2018 Budget Metrics	TDA Revenue Mix			per Owner			Annual Assessment (AA)			AA Capital Contributions			Operating Fund Revenue Mix	
	AA Revenue	12,299,000	50%	940	49%	6,085,000	Operating Fund	620	65%	4,013,000 (33%)	ReplResv	6,085,000(33%)	AA Rev	
	Operating Rev	12,460,000	50%	960	51%	6,214,000	Capital Funds	30	3%	194,000 (2%)	New Equip	12,460,000(67%)	Op Rev	
	Total Revenue	24,759,000	100%	1900	100%	12,299,000	Annual Assesm TL	310	32%	2,007,000 (16%)	DevelopFd	18,545,000(100%)	Total	
\$23.3 Million Revenue Requirement / Budget				an increase from 2016 of \$0 or 0% same as 2015 in total as well				960	100%	6,214,000 (51%)	TL, Cap Fds			