

Emergency Management

Notifications, Evacuations, & Traffic

(Evacuating Tahoe Donner in 2.2 hours)

Robert Womack – M.S. / CEM

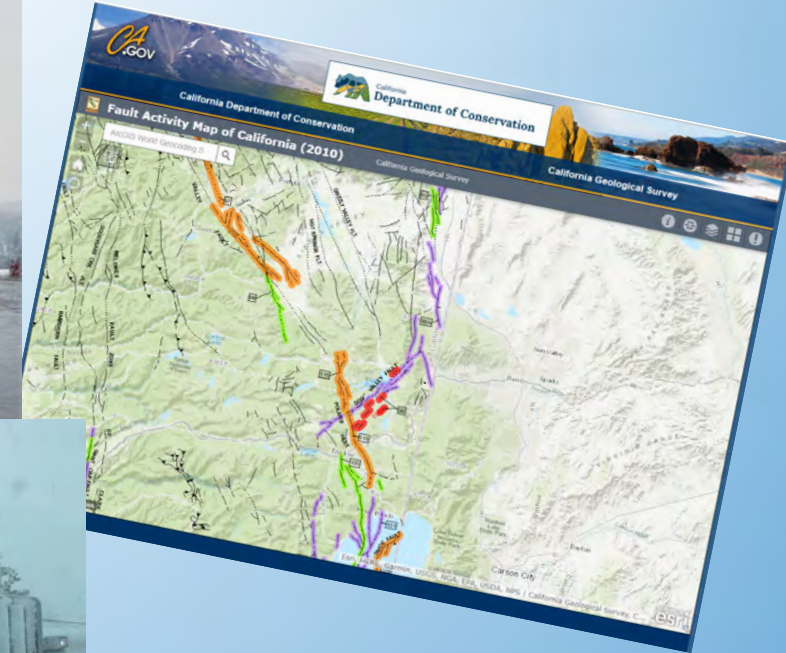
Emergency Services Coordinator

Truckee Police Dept. – Office of Disaster Preparedness



If you want to know why a summer evacuation does not look like a winter gridlock.....

Emergency management is so much more than Wildfire



Heavy Rain Wednesday-Thursday

Clear drainages/gutters of debris and snow **NOW**.

- Urbanized areas below 8000 feet have increased runoff potential.
- Areas of specific concern include: Mammoth, South Lake Tahoe, Truckee, Tahoe City, etc. Where snow remains from previous storms.
- Keep an eye on typically flood prone locations, including small creeks and low water crossings.

Drains blocked by snow in mountain communities are a big source of unexpected flooding problems!

National Weather Service | Reno, NV | weather.gov/reno





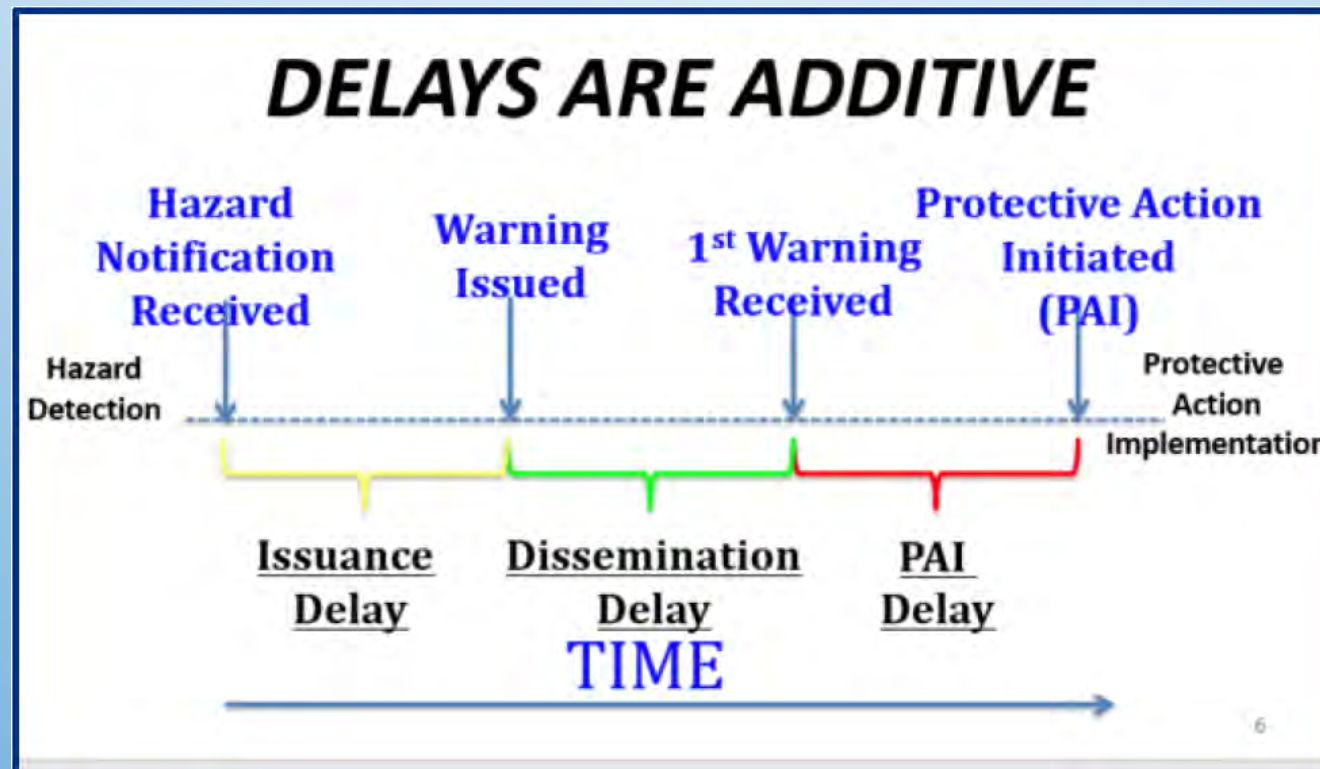
-- Wildfire is still #1--



Dr. Dennis Mileti on Emergency Notifications (FEMA Prep Talks – 2018)

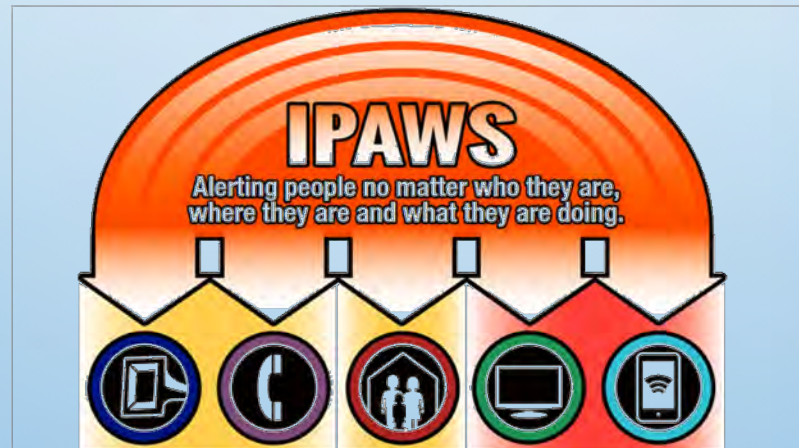
There never has been, there never will be, a silver bullet for disseminating warnings.

The problem you are up against when it comes to giving warnings: it's human beings.

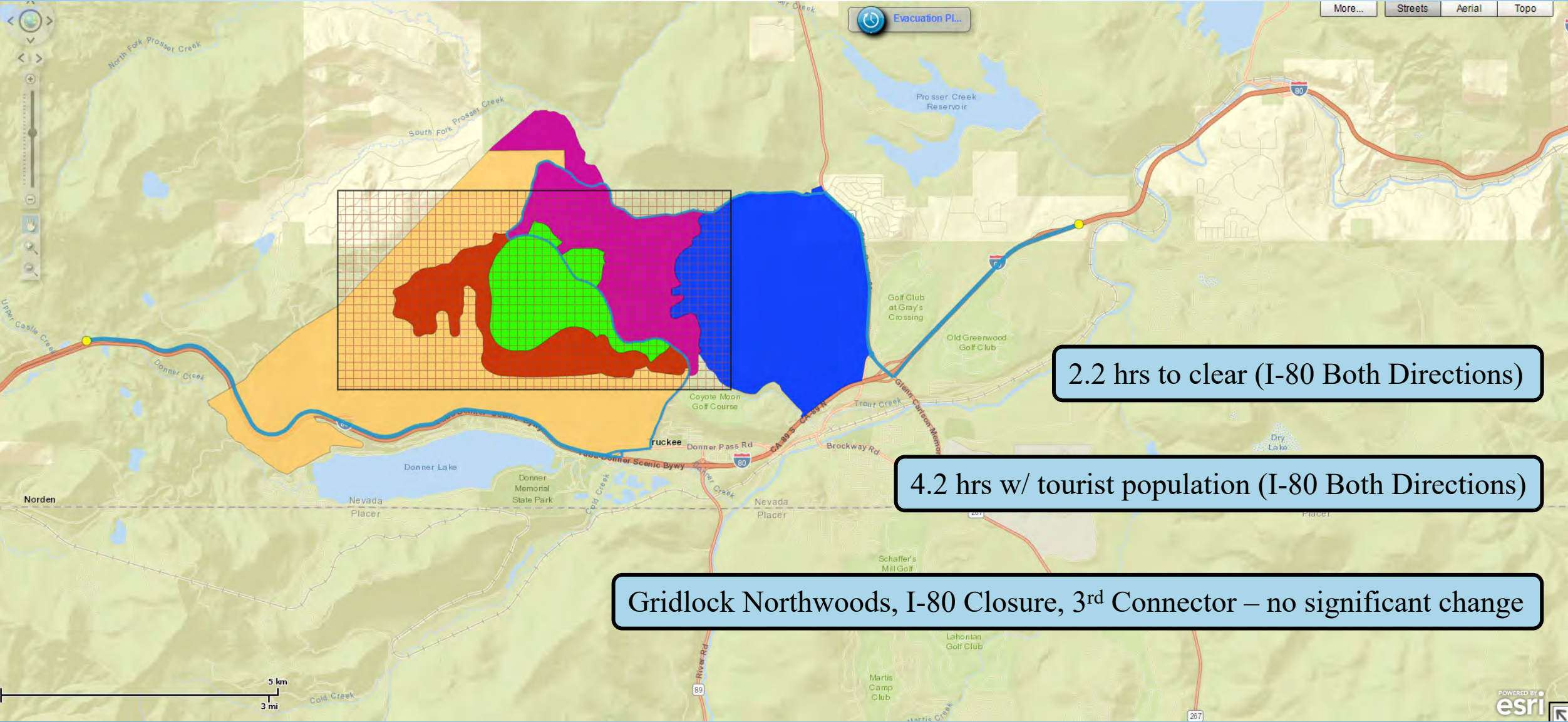


The Future is Here.....

(or your refrigerator is talking to you.....)



Real Time Evacuation Planning Model (RtePM) – Old Dominion University



Base Population 4,700 – Nighttime (longest) – 1,885 vehicles // Tourist Population 14,000 – 4,666 vehicles

Three keys to Personal Safety During Emergency Incidents

1. Situational Awareness – Be aware of your situation & surroundings
2. Preparedness -- Be really ready to go when we say go
3. Follow Directions -- Please do not argue or try to go the other way because your GPS knows better.....



Questions