

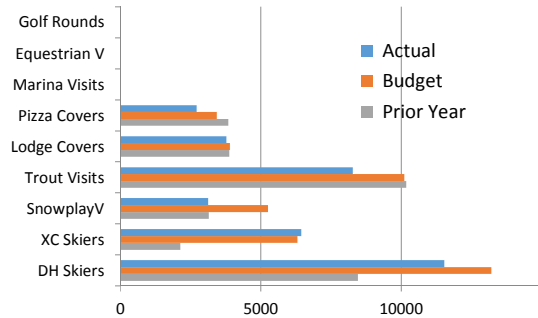


Dollars in Thousands

Dashboard Report 1

February 2019

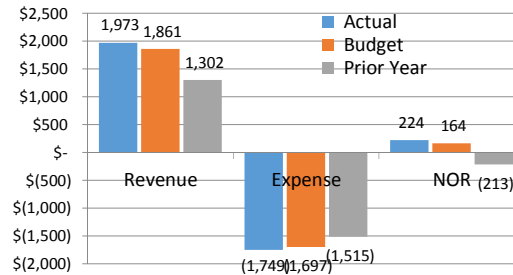
Month | Operating Volumes February 2019



February Revenue: \$1,972,765

111,765/6% fav to Bdg and 670,593/51% fav to PY

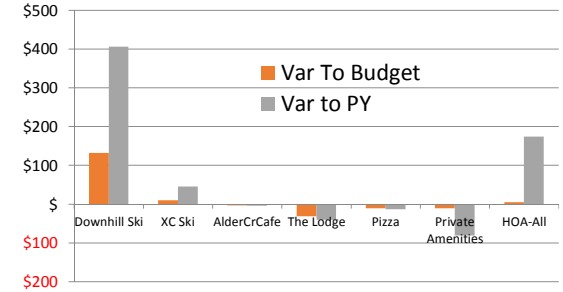
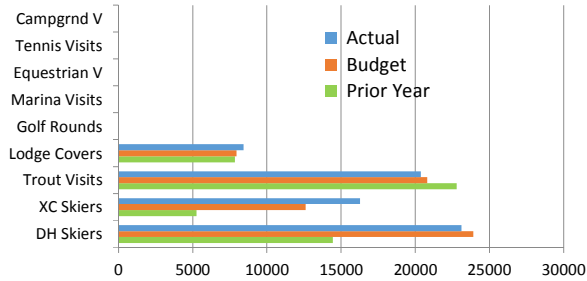
Month | Operating Fund Results February 2019



February NOR: \$223,514

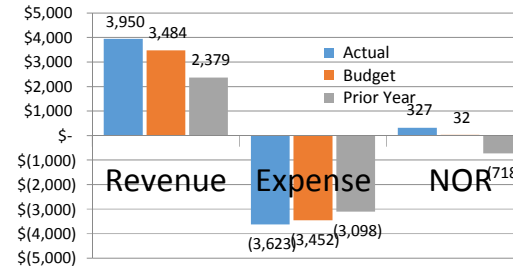
59,514/36% fav to Bdg and 436,088/205% fav to PY

Month | Key NOR Variances February 2019

YTD | Volumes
For the two months ending February 2019

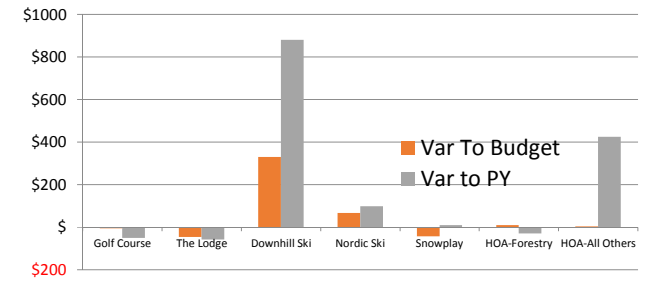
February YTD Revenue: \$3,950,264

466,264/13% fav to Bdg and 1,570,881/66% fav to PY

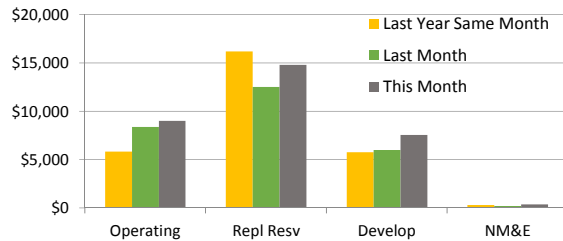
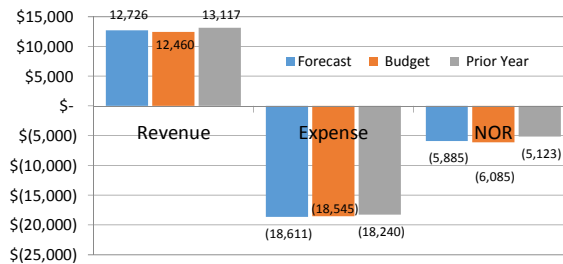
YTD | Operating Fund Results
For the two months ending February 2019

February YTD NOR: \$327,331

295,331/923% fav to Bdg and 1,045,622/146% fav to PY

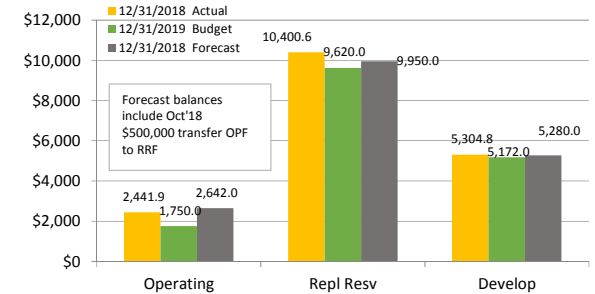
YTD | Key NOR Variances
For the two months ending February 2019

Cash & Investments Balances, as of month end:

FORECAST ANNUAL 2019
Operating Fund | as of this report date

vs Budget: Revenue Fav 266,000/2% | NOR Fav 200,000/3%

Members Equity Balances as of Year End 12/31/xx



2019 Budget Metrics	TDA Revenue Mix			per Owner	Annual Assessment (AA)			AA Capital Contributions				Operating Fund Revenue Mix	
	AA Revenue	12,719,000	47%	880	45%	5,696,000	Operating Fund	720	66%	4,661,000 (37%)	ReplResv	5,696,000 (29%)	AA Rev
	Operating Rev	14,215,000	53%	1085	55%	7,023,000	Capital Funds	30	3%	194,000 (1%)	New Equip	14,215,000 (71%)	Op Rev
	Total Revenue	26,934,000	100%	1965	100%	12,719,000	Annual Assesm TL	335	31%	2,168,000 (17%)	DevelopFd	19,911,000 (100%)	Total
	\$23.3 Million Revenue Requirement / Budget			an increase from 2018 of \$65 or 3%, after 3yrs flat at \$1900			1085	100%	7,023,000 (55%)	TL, Cap Fds			