

TRAIL INFO: 530-582-9672 or trails@tahoedonner.com

FOR EMERGENCIES CALL 911

Please report any trail problems, vandalism, safety issues or aggressive animals to the association.



ACCESS RULES

- No motorized vehicles
- Only enter and exit the trail systems at a trailhead, community- or other-approved connectors
- Trail system is open from sunrise to sunset
- Obey all signs, gates and barriers; do not enter a “no trail” or “closed” area

SAFETY RULES

- Yield Standard - mountain bikers yield right of way to hikers and equestrians
- Plan ahead and be informed
- Never spook animals; beware of natural wildlife and respect their space
- Carry photo identification at all times
- Communicate your presence
- Stay in control of your bike and/or animal at all times

USAGE RULES

- Trails are multi-use
- Stay on designated trails
- Pets must be on leash at all times; pack out pet waste
- No camping
- No fires, fireworks, firearms or hunting

SUSTAINABILITY RULES

- Leave no trace
- Practice low impact cycling
- Respect others and the natural resources
- Building features and trails is prohibited
- Prevent spreading seeds

TRAIL SYSTEM VISION

The Tahoe Donner trail system supports the varied membership use and encourages continual exploration and stewardship of the community and recreational space.

WHITE TRIANGLES INDICATE TAHOE DONNER TRAILS.



TRAIL DESIGNATIONS

The Tahoe Donner trail system is comprised of several trail designations to meet various group needs and interests, achieve safety and environmental goals and design and maintenance standards.



MULTI-USE

This trail type is a wide double-track trail where users can pass or walk side by side and/or is a wide single-track trail with passing pull-outs.



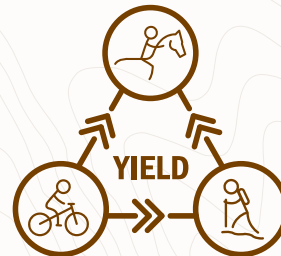
HIKER AND MOUNTAIN BIKER PREFERRED

This narrow single-track trail type is designed to meet the needs of hikers and mountain bikers. Equestrians are allowed on these trails but not encouraged. Users of these trails should expect to see many hikers and bikers going in both directions.



EQUESTRIAN PREFERRED

This narrow single-track trail type is designed to meet the needs of equestrians. Hikers and mountain bikers are allowed on these trails but not encouraged. These trails are used by equestrians, so other users should expect to see horses.



SUMMER TRAIL MAP

HIKING | BIKING | EQUESTRIAN



TAHOE DONNERSM



TRAILS

530-582-9672
trails@tahoedonner.com



BIKEWORKS

530-582-9694
bikeworks@tahoedonner.com



EQUESTRIAN

530-587-9470
equestrian@tahoedonner.com

ALDER CREEK ADVENTURE CENTER, TRAILS, BIKEWORKS
AND EQUESTRIAN PHYSICAL ADDRESS:
15275 Alder Creek Road, Truckee, CA 96161

TAHOE DONNER ASSOCIATION:
11509 Northwoods Blvd., Truckee, CA 96161 | 530-587-9400

WELCOME TO THE TAHOE DONNER TRAIL SYSTEM

We invite members and guests to explore more than 60 miles of trails and fire access service roads, covering approximately 5,018 acres of common land owned and maintained by Tahoe Donner Association.

The trail system offers a variety of terrain, from the level meadow trail near Northwoods Clubhouse to scenic vista points above Donner Lake (near trail marker 20A) and Euer Valley (near trail marker 14 and 65). The Johnson Canyon overlook at trail marker 22 is over 7,000 feet in elevation and offers spectacular views and challenging terrain.

PARKING | Parking is available near the Alder Creek Adventure Center for Euer Valley and Crabtree Canyon access. Parking is also available at the Glacier Way parking lot to access many of the trails that offer scenic views of Donner Lake. The Northwoods Clubhouse parking lot can be used to access the Northwoods Nature Loop Trail. Please respect local neighborhoods and park responsibly. Roadside parking is also available at several trailheads.

WILD ANIMALS | Many different species of animals may be seen while using the trails including quail, grouse, squirrels, rabbits, marmots, beavers, deer, mountain lions and black bears. Most wild animals will not approach humans. Please respect the natural habitat of wild animals and never feed them. **Don't approach mountain lions or bears (especially cubs). If you encounter a mountain lion or bear, do not run. Stand your ground, keep eye contact and make yourself look bigger, perhaps using your jacket or daypack. Then slowly back away.**

Report any unusual or aggressive animal activity to the trails department at 530-582-9672 or trails@tahoedonner.com.

FIRE SAFETY | Due to extreme fire hazard conditions throughout Tahoe Donner, smoking is prohibited on the trail system. Overnight camping and fires are not permitted except at designated areas within the Tahoe Donner Campground. Motor vehicle access is limited to Tahoe Donner crews. Fire safety improvement activities may be conducted throughout Tahoe Donner. **Check with the trails office for trail conditions and hazards at 530-582-9672. For emergencies, call 911.**

PLEASE BE CAREFUL | Enjoy the trails at your own risk. Hike, mountain bike and horseback ride responsibly. Please stay on designated trails and fire access roads to avoid becoming lost or disoriented. If you become lost, look for trail markers on trees and posts and/or recognizable landmarks or other features that may orient you. Parents, please accompany your children. Always notify others of your itinerary.

WEATHER CONDITIONS | Weather changes rapidly in the Sierra. Temperatures can rise and fall dramatically during the day. Be prepared and know your limits. Wear clothing that prevents excessive heat loss and/or sunburn. Always carry and drink plenty of water while using the trails.

SHARE THE TRAIL | Hikers, mountain bikers and horseback riders share many of the trails throughout Tahoe Donner. Please be courteous to other trail users.



RESPECTING YOUR NEIGHBORS

Tahoe Donner Association now owns 5,018 acres with the purchase of Crabtree Canyon (640 acres) in May 2016. The private lots and residences of Tahoe Donner make up a total of 2,358 acres. When combined, the entire acre size of Tahoe Donner is 7,376 acres. Much of the Tahoe Donner-owned acreage is open area and the board, committees and management are committed to protecting and enhancing the area for long-term stewardship.



TAHOE DONNER HAS SEVERAL NEIGHBORS THAT ACCESS THEIR PROPERTY WITH A ROAD EASEMENT ALONG THE EUER VALLEY ROAD AND ARE ALLOWED TO BRING MOTOR VEHICLES INTO THE AREA.

These neighbors include:

- Private lots/residences
- The United States Forest Service-Tahoe National Forest
- Sierra Pacific Industries
- The Euer family
- The Donner Euer Valley Corporation (commonly referred to as the 7Cs)
- The Tahoe Truckee Land Trust

The private land owners adjacent to Tahoe Donner expressly prohibit access to or through their property. Tahoe Donner posts signs for these boundaries and asks you respect their property and wishes.



alder creek
cafe

Refuel With Delicious, Healthy Homemade Food at the Alder Creek Café

Expanded cuisine selections
Made to order lunches • Grab-and-Go Items
Beer, Wine, and small plates served in the bar

Fresh, organic and locally sourced when possible

Hours vary; see tahoedonner.com

VOLUNTARY SUMMER PUBLIC TRAIL PASS PROGRAM

This program is a voluntary monetary contribution for public trail users. Its purpose is to recognize the financial commitment and trail maintenance efforts the association has made and continues to make on the 60+ miles of multi-use single-track and double-track summer trail system.

Trail access for members and guests of members is free; for those who are not Tahoe Donner members, a suggested donation of \$5 for adult and \$2 for child daily use, or \$30 for adult and \$15 for child summer pass is encouraged. Donations may be made at Alder Creek Adventure Center, Bikeworks, and Member Services; online at tahoedonner.com/shop; and at select iron rangers at the major trailheads of Glacier Way, Teton Way and the Euer Valley gateway located at Alder Creek Adventure Center.

Thank you for contributing to the Tahoe Donner Association trail system.

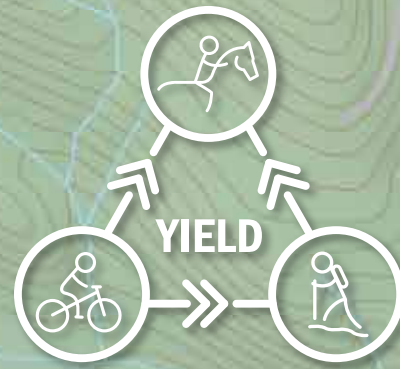


TAHOE DONNER TRAIL SYSTEM

TRAIL INFO: 530-582-9672 or trails@tahoedonner.com

FOR EMERGENCIES CALL 911

Please report any trail problems, vandalism, safety issues or aggressive animals to the association.



LEGEND

- MILE MARKER
- DOUBLETRACK TRAIL
- PAVED CLASS 1 BIKE TRAIL
- SINGLETRACK TRAIL
- BIKE LANE
- BIKE ROUTE
- SECONDARY ROAD
- PRIMARY ROAD
- TAHOE DONNER BOUNDARY
- GOLF COURSES
- LAKE/POND
- STREAM
- 40-FOOT CONTOURS
- PRIVATE PROPERTY
- TAHOE NATIONAL FOREST
- TAHOE DONNER TRAILHEAD
- NORTHWOODS POOL
- TENNIS CENTER
- CAMPGROUND
- EQUESTRIAN CENTER
- BIKEWORKS

TRAIL DIFFICULTY RATINGS

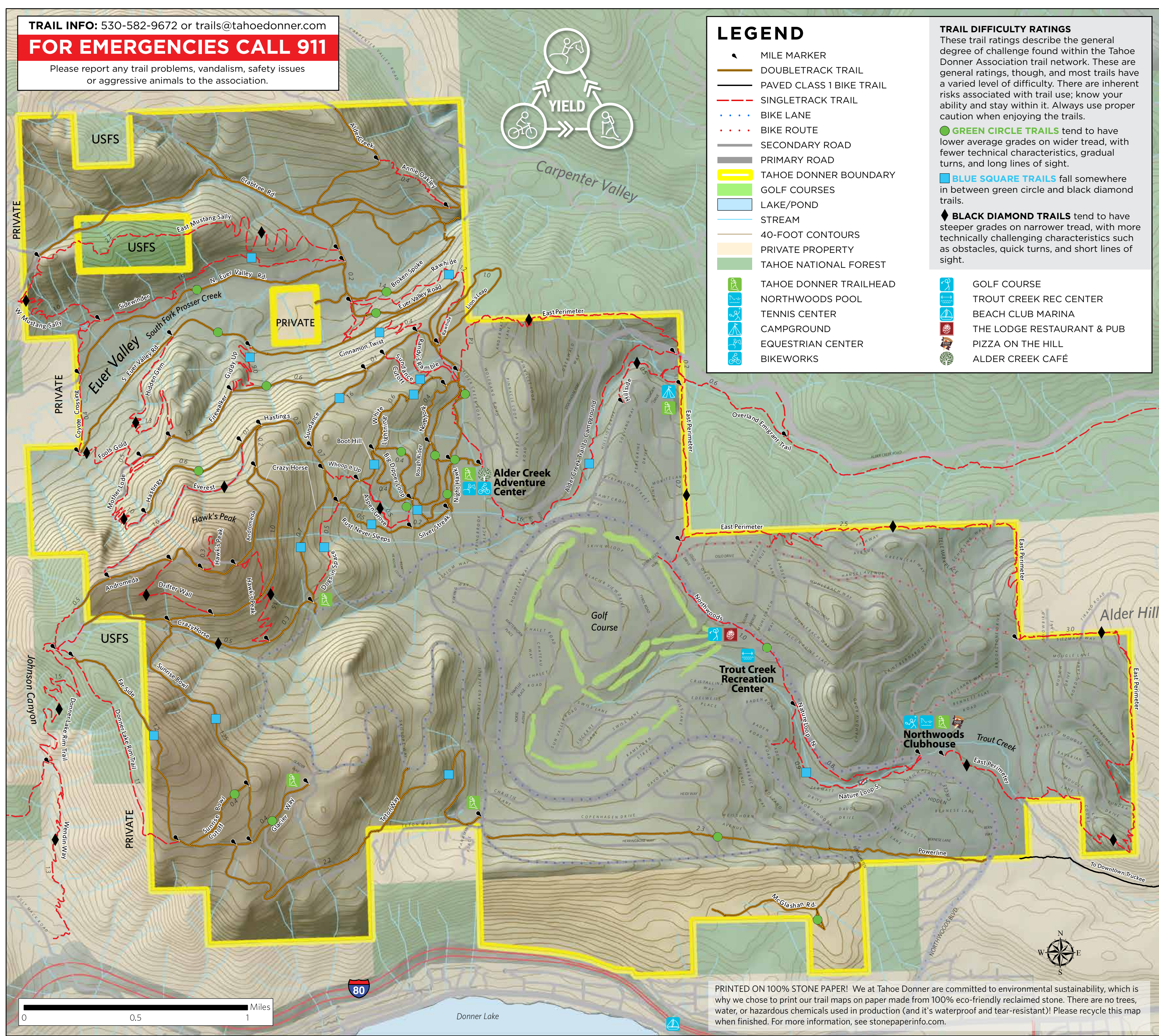
These trail ratings describe the general degree of challenge found within the Tahoe Donner Association trail network. These are general ratings, though, and most trails have a varied level of difficulty. There are inherent risks associated with trail use; know your ability and stay within it. Always use proper caution when enjoying the trails.

GREEN CIRCLE TRAILS tend to have lower average grades on wider tread, with fewer technical characteristics, gradual turns, and long lines of sight.

BLUE SQUARE TRAILS fall somewhere in between green circle and black diamond trails.

BLACK DIAMOND TRAILS tend to have steeper grades on narrower tread, with more technically challenging characteristics such as obstacles, quick turns, and short lines of sight.

- GOLF COURSE
- TROUT CREEK REC CENTER
- BEACH CLUB MARINA
- THE LODGE RESTAURANT & PUB
- PIZZA ON THE HILL
- ALDER CREEK CAFÉ



PRINTED ON 100% STONE PAPER! We at Tahoe Donner are committed to environmental sustainability, which is why we chose to print our trail maps on paper made from 100% eco-friendly reclaimed stone. There are no trees, water, or hazardous chemicals used in production (and it's waterproof and tear-resistant)! Please recycle this map when finished. For more information, see stonepaperinfo.com.