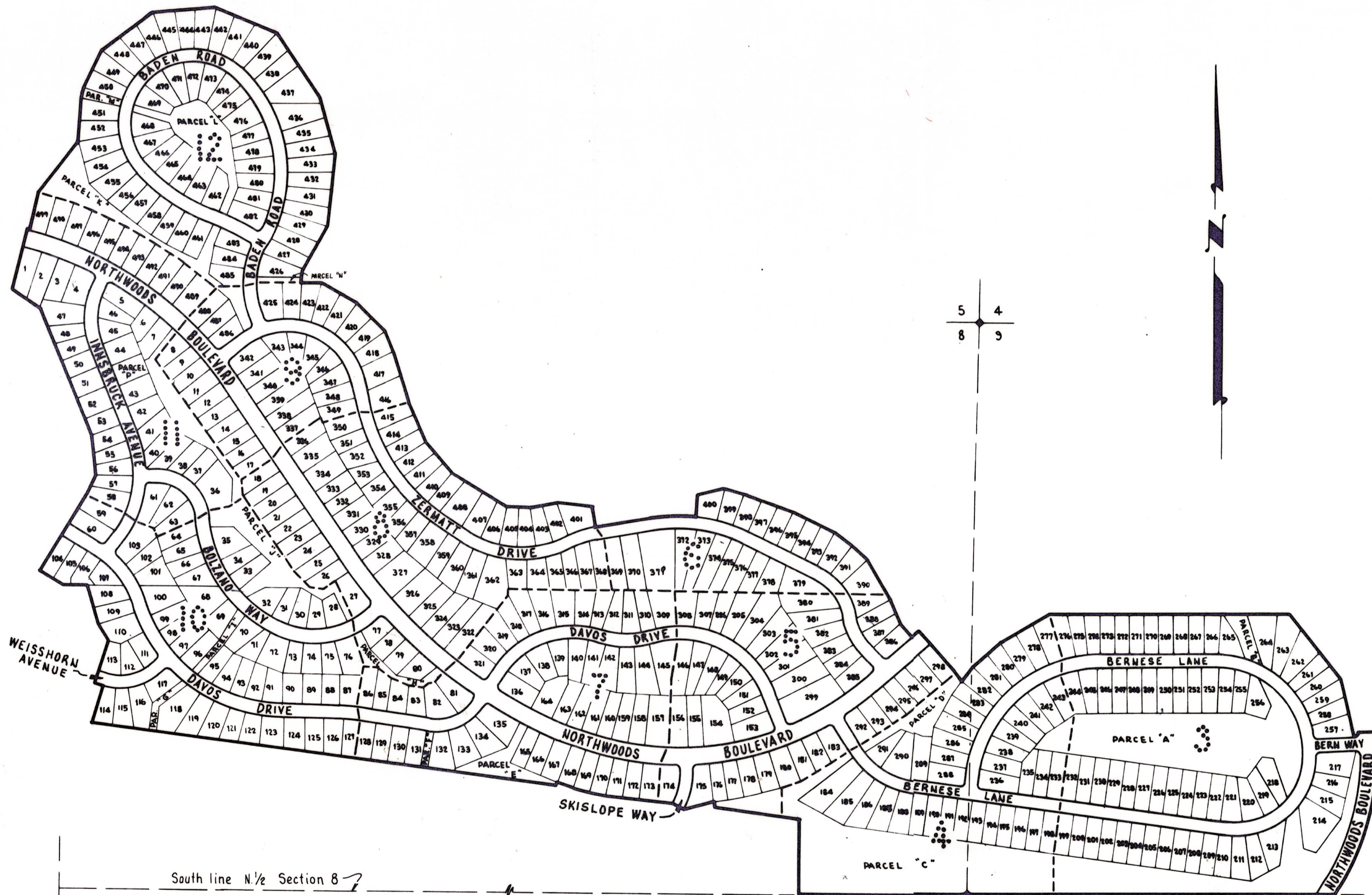


Jim Beranmer



5 4
8 9

South line N 1/2 Section 8

SEC 8
SEC 9

Section 7
Section 8

INDEX MAP

- A.E.
- D.E.
- R.E.
- P.U.E.
- P.T.M.
- S.E.
- SE/AE
- 8' Side
- PUMP P

TAHOE DONNER
UNIT-1

LYING WITHIN SECTIONS 5, 8 & 9 T.17N., R.16E., M.D.B. & M.
IN THE UNINCORPORATED TERRITORY
OF
NEVADA COUNTY, CALIFORNIA
MAY 1970 SCALE: 1" = 400'

CRANMER ENGINEERING, INC.

SHEET 2 OF 12 SHEETS

UNIT 1-2