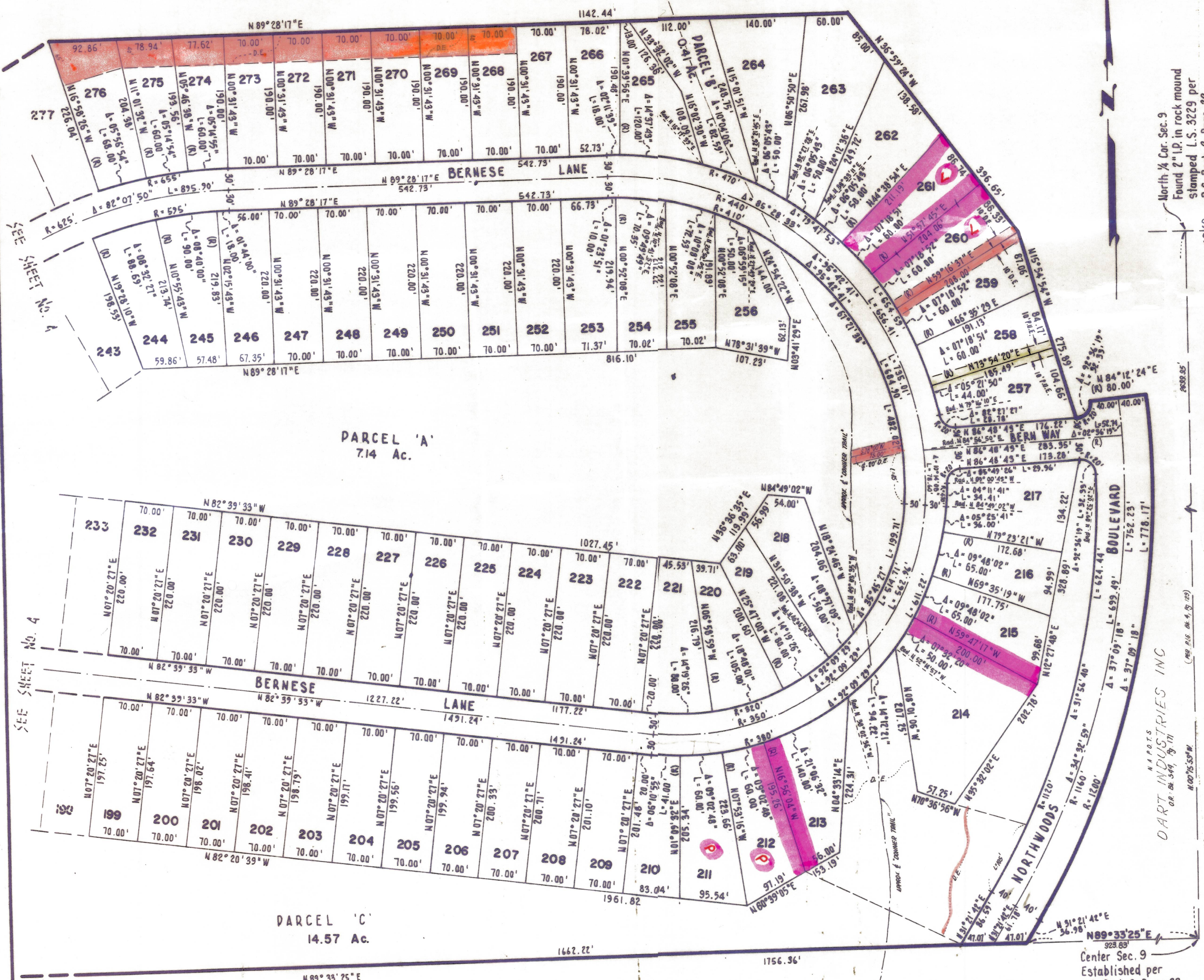


N.A.P.O.T.S.
DART INDUSTRIES INC.
 O.R. 04-549, Pg. 171

NOTES

1. 3/4" rod set at all exterior angle points and curve points, tagged R.C.E. 13309 except as noted.
2. 3/4" rod set at all interior lot corners, angle points and curve points, no tag, except as noted.
3. Indicates permanent monument.
4. Basis of bearings as shown on sheet 1 of 12 sheets.
5. N.A.P.O.T.S. - NOT A PART OF THIS SUBDIVISION.



North 1/4 Cor. Sec. 9
 Found 2" I.P. in rock mound
 stamped L.S. 3229 per
 R.S. Book 3 Page 32

Sec. 4
 Sec. 9

Jim B. Cranmer

SEE SHEET No. 4

PARCEL 'A'
 7.14 Ac.

BERNESE
 LANE

PARCEL 'C'
 14.57 Ac.

N.A.P.O.T.S.
 TRUCKEE PUBLIC UTILITY DISTRICT

Center Sec. 9
 Established per
 R.S. Book 3 Page 32
 Set 1 1/2 I.P.

**TAHOE DONNER
 UNIT-1**

LYING WITHIN SECTIONS 5, 8 & 9 T.17N., R.16E., M.D.B.&M.
 IN THE UNINCORPORATED TERRITORY
 OF
NEVADA COUNTY, CALIFORNIA
 MAY 1970 SCALE: 1" = 100'

CRANMER ENGINEERING, INC.

SHEET 3 OF 12 SHEETS

UNIT 1-3