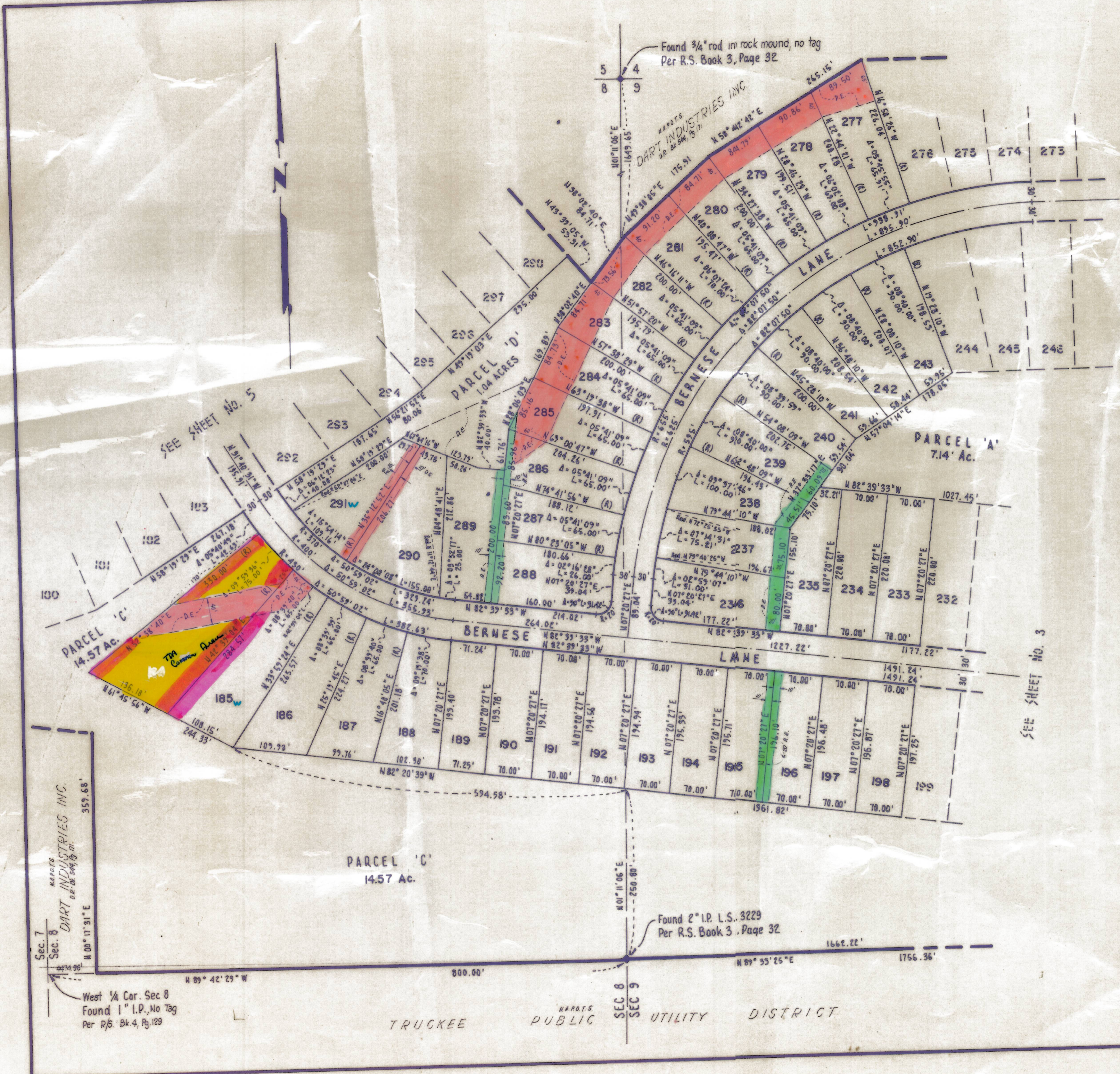


- NOTES**
1. 3/4" rod set at all exterior angle points and curve points, tagged R.C.E. 13309 except as noted.
  2. 3/4" rod set at all interior lot corners, angle points and curve points, no tag, except as noted.
  3. □ Indicates permanent monument.
  4. Basis of bearings as shown on sheet 1 of 12 sheets.
  5. N.A.P.O.T.S. - NOT A PART OF THIS SUBDIVISION.

*Jim B. Cranmer*



SEE SHEET NO. 3

SEE SHEET NO. 3

# TAHOE DONNER UNIT-1

LYING WITHIN SECTIONS 5, 8 & 9 T.17N., R.16E., M.D.B.&M.  
 IN THE UNINCORPORATED TERRITORY  
 OF  
**NEVADA COUNTY, CALIFORNIA**  
 MAY 1970 SCALE: 1" = 100'

**CRANMER ENGINEERING, INC.**

SHEET 4 OF 12 SHEETS

UNIT 1-4