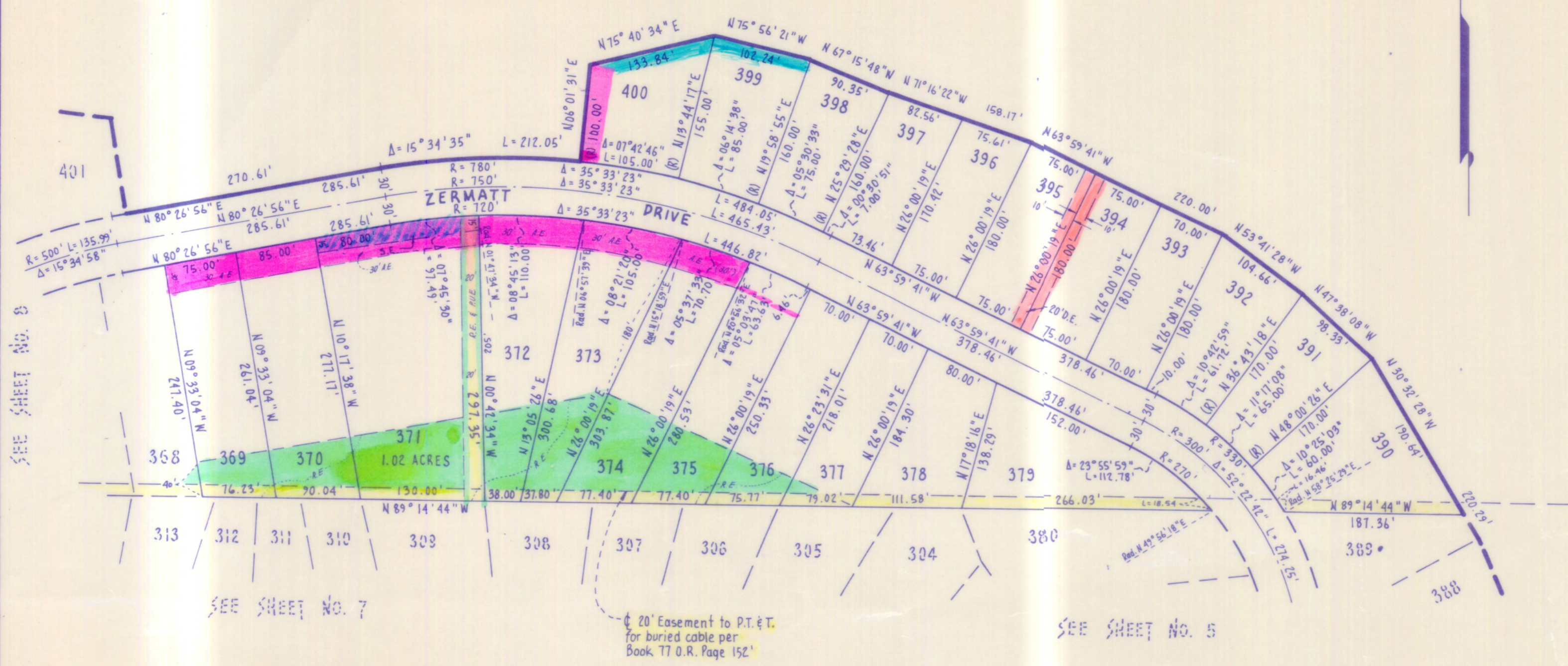


DART INDUSTRIES, INC.
N.A.P.O.T.S.
 OR Bk. 549, Pg. 171.

NOTES

1. 3/4" rod set at all exterior angle points and curve points, tagged R.C.E. 13309 except as noted.
2. 3/4" rod set at all interior lot corners, angle points and curve points, no tag, except as noted.
3. \square Indicates permanent monument.
4. Basis of bearings as shown on sheet 1 of 12 sheets.
5. N.A.P.O.T.S. - NOT A PART OF THIS SUBDIVISION.



**TAHOE DONNER
 UNIT-1**

LYING WITHIN SECTIONS 5, 8 & 9 T.17N., R.16E., M.D.B.&M.
 IN THE UNINCORPORATED TERRITORY
 OF
NEVADA COUNTY, CALIFORNIA
 MAY 1970 SCALE: 1" = 100'

CRANMER ENGINEERING, INC.

SHEET 6 OF 12 SHEETS

UNIT 1-6