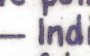
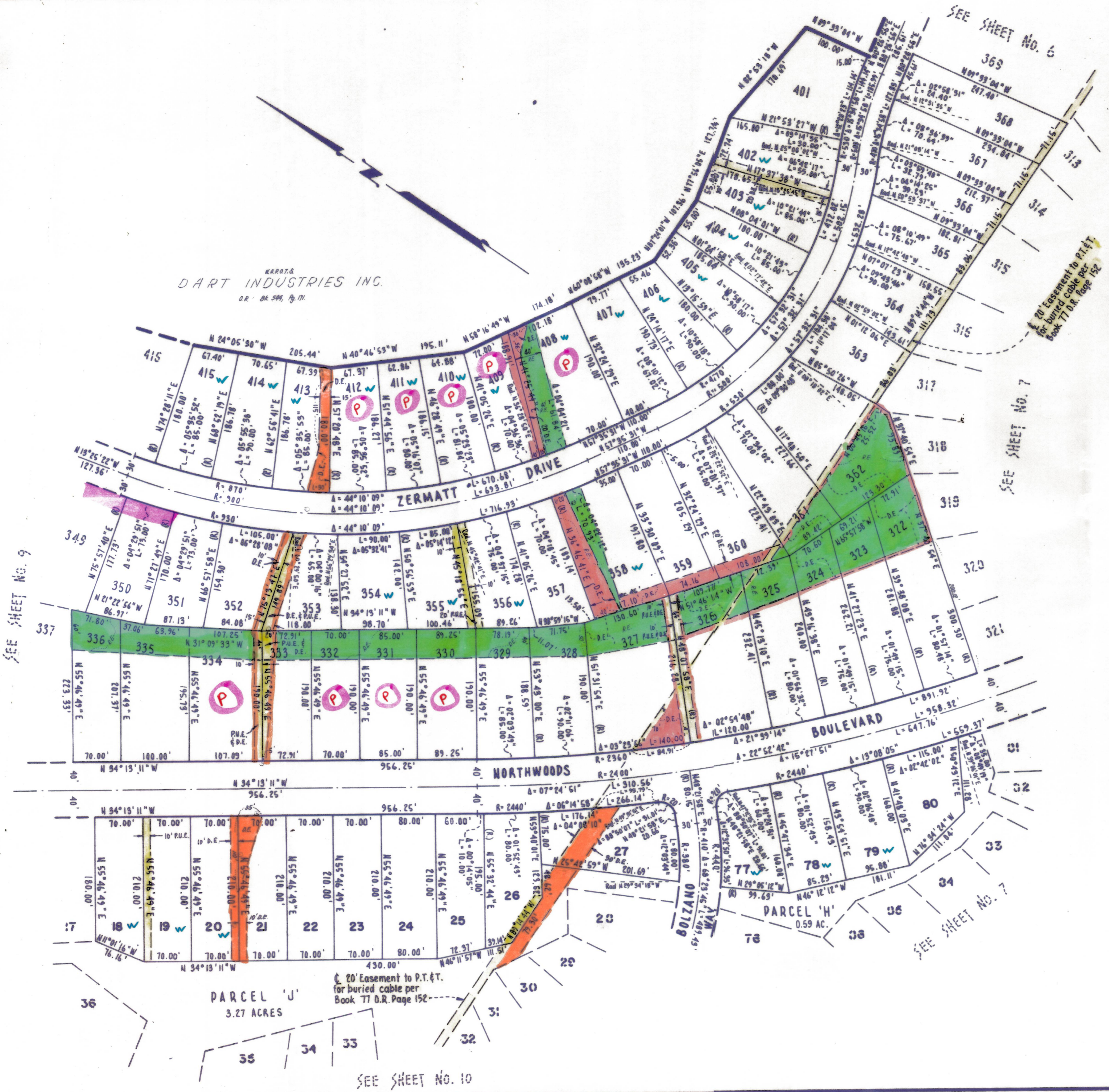


NOTES

1. 3/4" rod set at all exterior angle points and curve points, tagged R.C.E. 13309 except as noted.
2. 3/4" rod set at all interior lot corners, angle points and curve points, no tag, except as noted.
3.  Indicates permanent monument.
4. Basis of bearings as shown on sheet 1 of 12 sheets.
5. N.A.P.O.T.S. - NOT A PART OF THIS SUBDIVISION

John B. Cranmer
 PROFESSIONAL ENGINEER
 13309
 CIVIL
 STATE OF CALIFORNIA



TAHOE DONNER UNIT-1

LYING WITHIN SECTIONS 5, 8 & 9 T.17N., R.16E., M.D.B. & M.
 IN THE UNINCORPORATED TERRITORY
 OF
NEVADA COUNTY, CALIFORNIA
 MAY 1970 SCALE: 1" = 100'

CRANMER ENGINEERING, INC.

SHEET 8 OF 12 SHEETS

UNIT 1 - 8