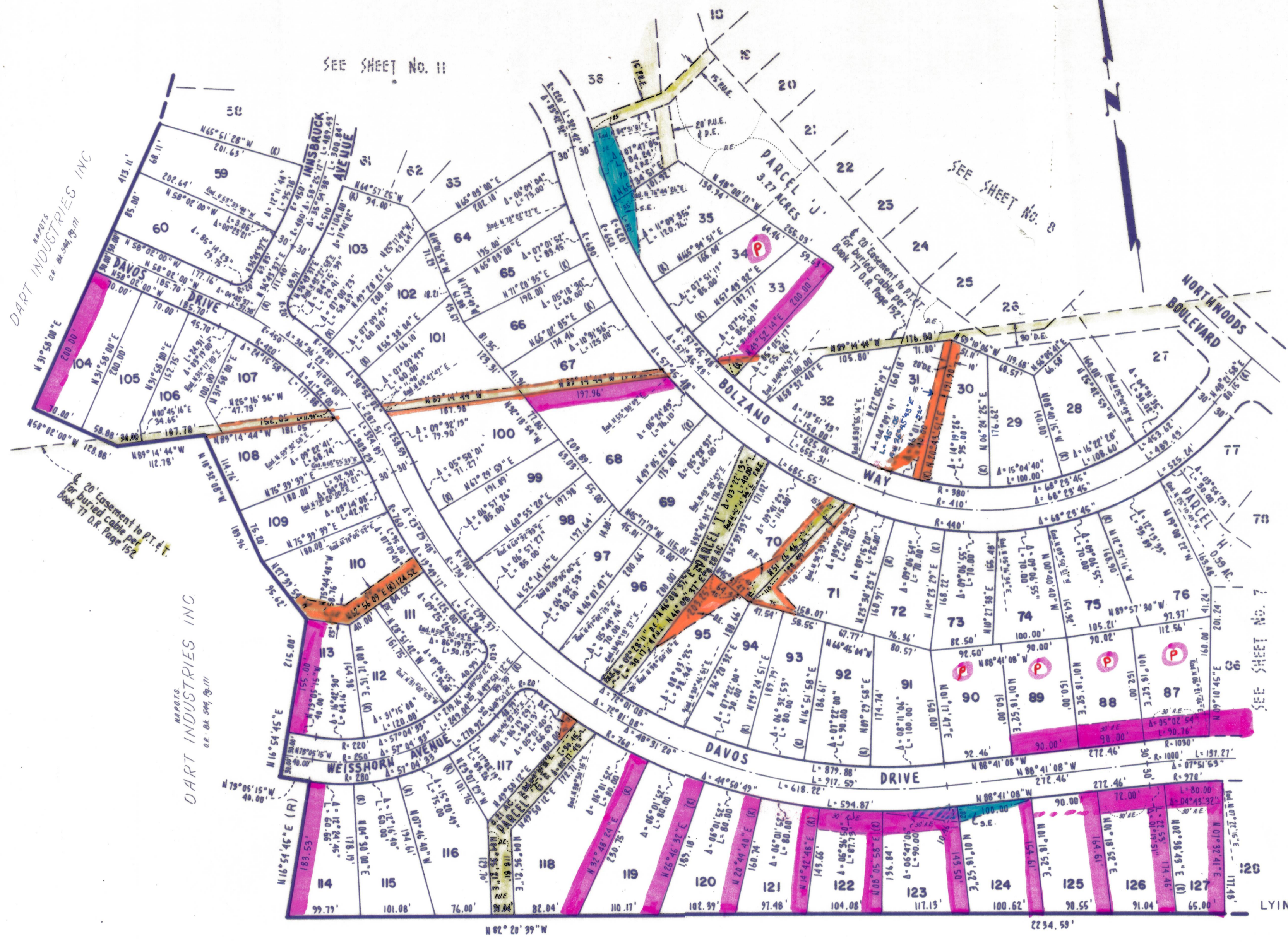


NOTES

1. 3/4" rod set at all exterior angle points and curve points tagged R.C.E. 13309 except as noted.
2. 3/4" rod set at all interior lot corners, angle points and curve points, no tag, except as noted.
3. —□— Indicates permanent monument.
4. Basis of bearings as shown on sheet 1 of 12 sheets.
5. N.A.P.O.T.S.-NOT A PART OF THIS SUBDIVISION.

for B. Cranmer



**TAHOE DONNER
UNIT-1**

LYING WITHIN SECTIONS 5, 8 & 9 T. 17 N., R. 16 E., M.D.B. & M.
IN THE UNINCORPORATED TERRITORY
OF
NEVADA COUNTY, CALIFORNIA
MAY 1970 SCALE: 1" = 100'

CRANMER ENGINEERING, INC.

SHEET 10 OF 12 SHEETS

Unit 1-10