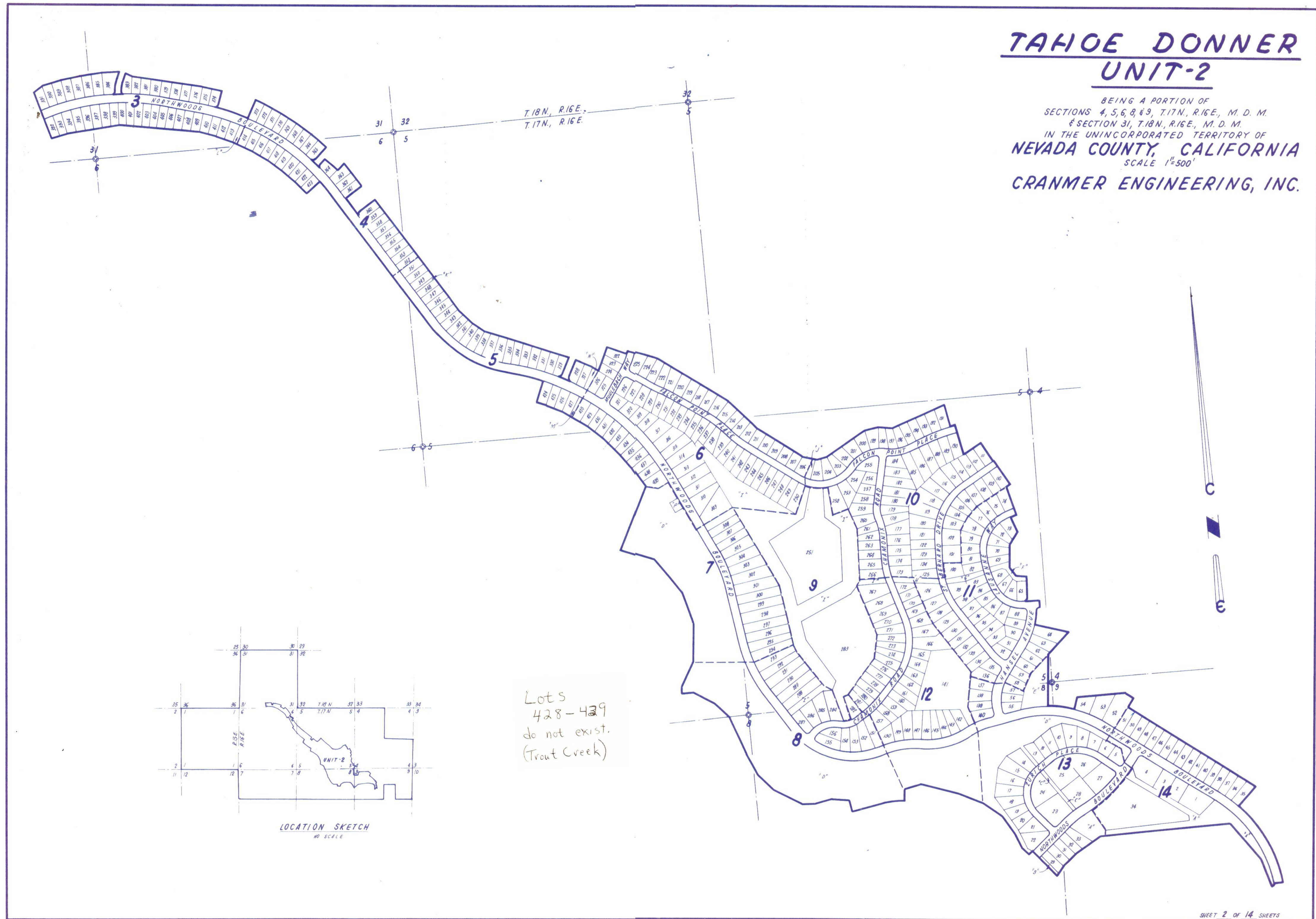
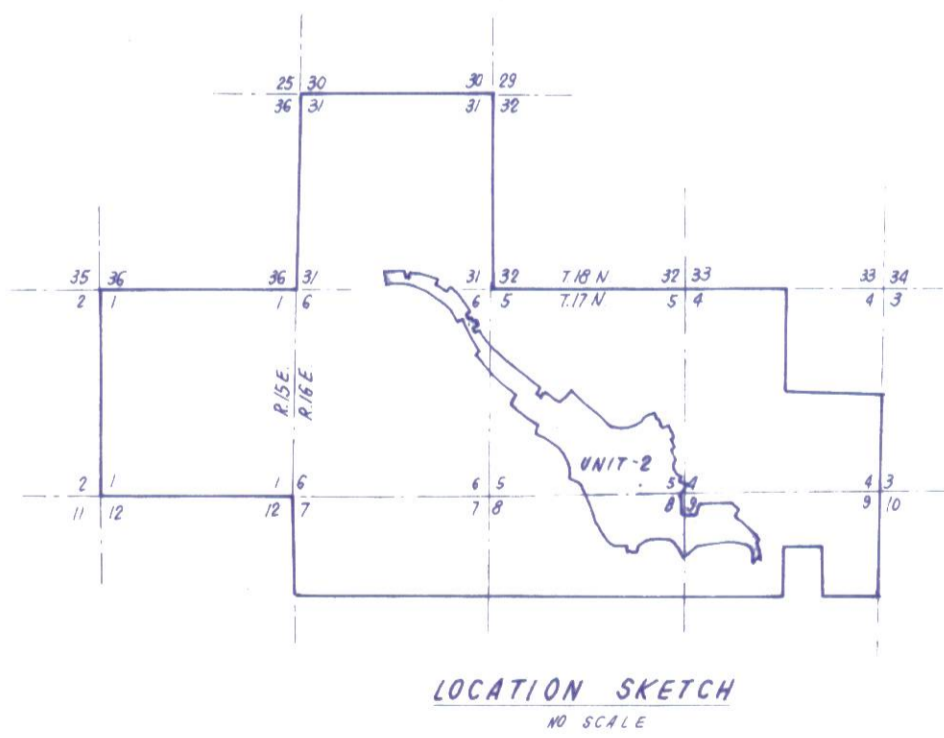


# TAHOE DONNER UNIT-2

BEING A PORTION OF  
SECTIONS 4, 5, 6, 8, & 9, T.17N., R.16E., M. D. M.  
& SECTION 31, T.18N., R.16E., M. D. M.  
IN THE UNINCORPORATED TERRITORY OF  
NEVADA COUNTY, CALIFORNIA  
SCALE 1"=500'  
CRANMER ENGINEERING, INC.



Lots  
428-429  
do not exist.  
(Trout Creek)



UNIT 2-2