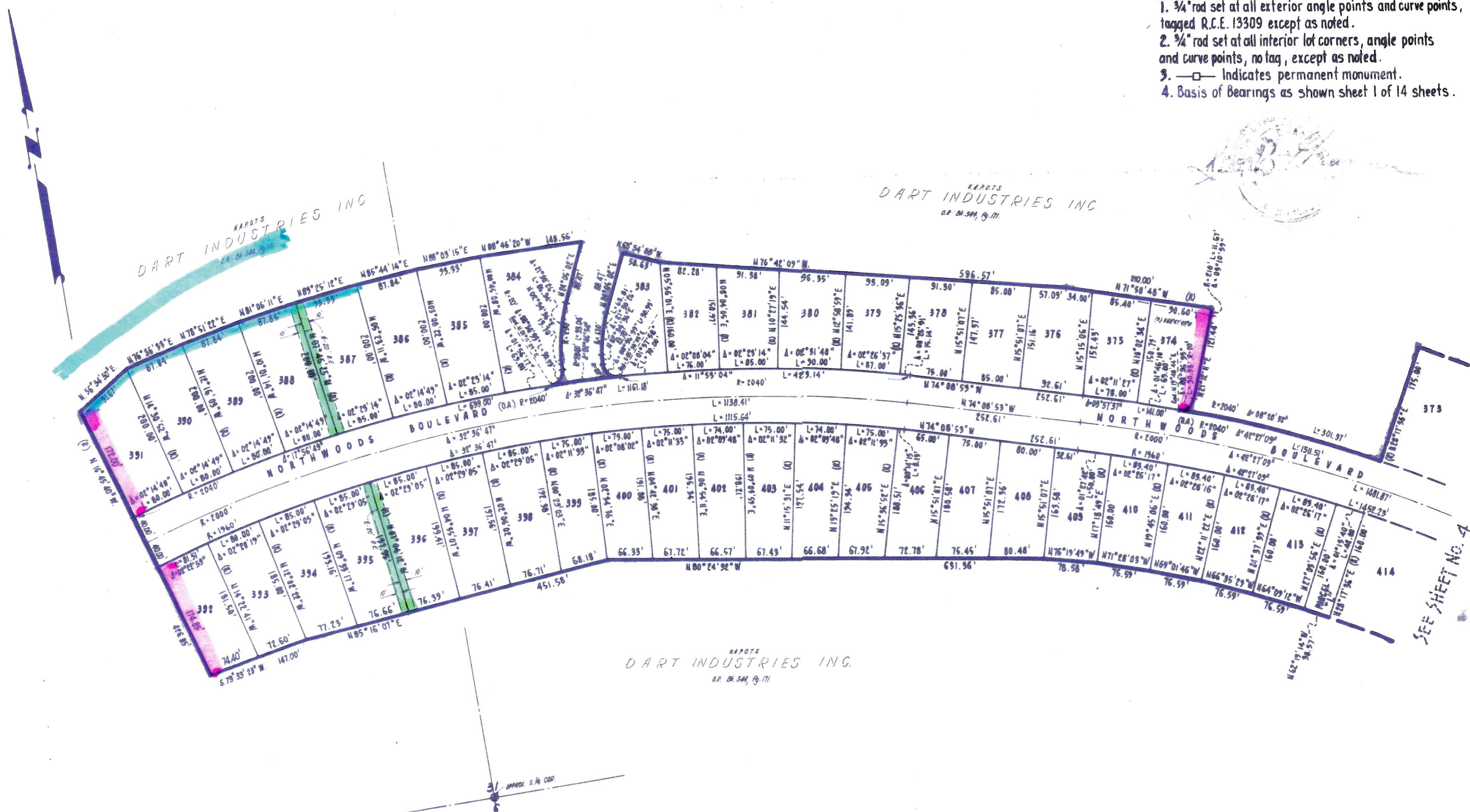


NOTES

1. 3/4" rod set at all exterior angle points and curve points, tagged R.C.E. 13309 except as noted.
2. 3/4" rod set at all interior lot corners, angle points and curve points, no tag, except as noted.
3. —□— Indicates permanent monument.
4. Basis of Bearings as shown sheet 1 of 14 sheets.



KAPOTS
DART INDUSTRIES INC
O.R. 24, 544, 19, 77.

KAPOTS
DART INDUSTRIES INC
O.R. 24, 544, 19, 77.

KAPOTS
DART INDUSTRIES INC
O.R. 24, 544, 19, 77.

**TAHOE DONNER
UNIT-2**

BEING A PORTION OF
SECTIONS 4, 5, 6, 8, 49, T.17N., R.16E., M. D. M.
SECTION 31, T.18N., R.16E., M. D. M.
IN THE UNINCORPORATED TERRITORY OF
NEVADA COUNTY, CALIFORNIA
SCALE 1"=100'
CRANMER ENGINEERING, INC.

SHEET 3 OF 14 SHEETS

UNIT 2-3