


NOTES

1. 3/4" rod set at all exterior angle points and curve points, tagged R.C.E. 13309 except as noted.
2. 3/4" rod set at all interior lot corners, angle points and curve points, no tag, except as noted.
3.  Indicates permanent monument.
4. Basis of bearings as shown on sheet 1 of 14 sheets.



DART INDUSTRIES INC.
N.A.P.T.S.
D.R. 24, 544, 8/71.

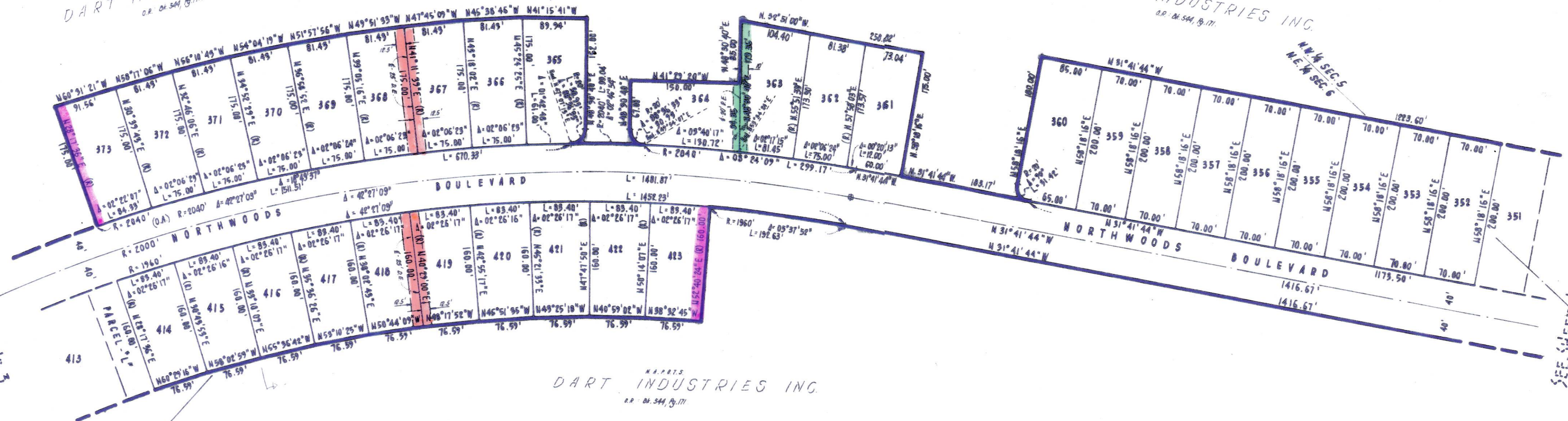
DART INDUSTRIES INC.
N.A.P.T.S.
D.R. 24, 544, 8/71.

S.E. 1/4 SEC. 31
N.E. 1/4 SEC. 6

N.W. 1/4 SEC. 5
N.E. 1/4 SEC. 6

SEE SHEET NO. 3

SEE SHEET NO. 5



**TAHOE DONNER
UNIT-2**

BEING A PORTION OF
SECTIONS 4, 5, 6, 8, 13, T.17N., R.16E., M. D. M.
SECTION 31, T.18N., R.16E., M. D. M.
IN THE UNINCORPORATED TERRITORY OF
NEVADA COUNTY, CALIFORNIA
SCALE 1"=100'
CRANMER ENGINEERING, INC.

UNIT 2-4