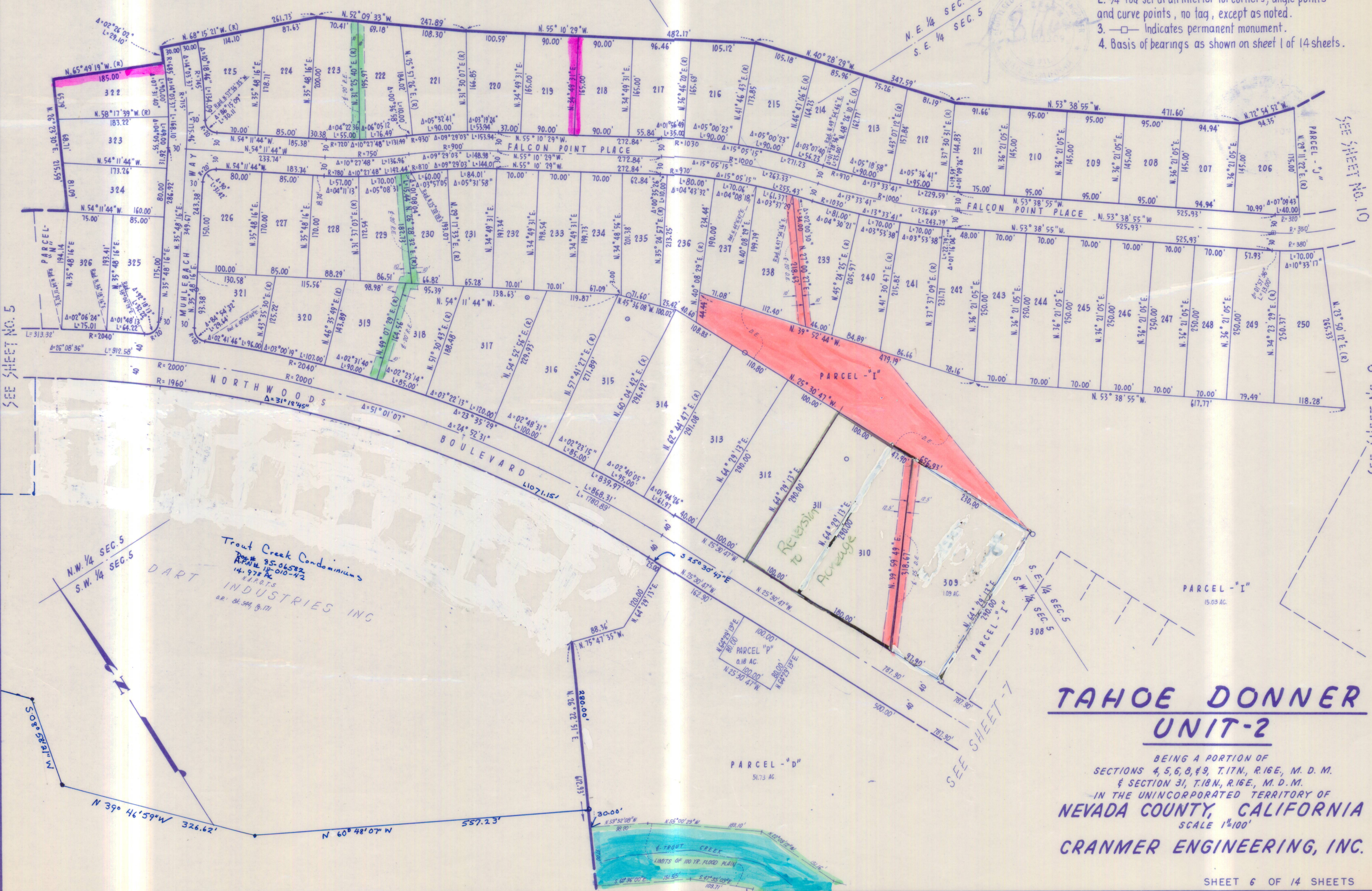


DART INDUSTRIES INC
N.A.P.O.T.S.
a.r. 86, 544, B, 171

NOTES

1. 3/4" rod set at all exterior angle points and curve points, tagged R.C.E. 13309 except as noted.
2. 3/4" rod set at all interior lot corners, angle points and curve points, no tag, except as noted.
3. \square Indicates permanent monument.
4. Basis of bearings as shown on sheet 1 of 14 sheets.



SEE SHEET NO. 5

SEE SHEET NO. 10

SEE SHEET NO. 9

Trout Creek Condominiums
R.P.N. # 85-06582
14.97 AC
N.A.P.O.T.S.
DART INDUSTRIES INC
a.r. 86, 544, B, 171

TAHOE DONNER UNIT-2

BEING A PORTION OF
SECTIONS 4, 5, 6, 8, 9, T.17N, R.16E, M. D. M.
& SECTION 31, T.18N, R.16E, M. D. M.
IN THE UNINCORPORATED TERRITORY OF
NEVADA COUNTY, CALIFORNIA
SCALE 1"=100'
CRANMER ENGINEERING, INC.

UNIT 2-6