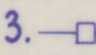


NOTES

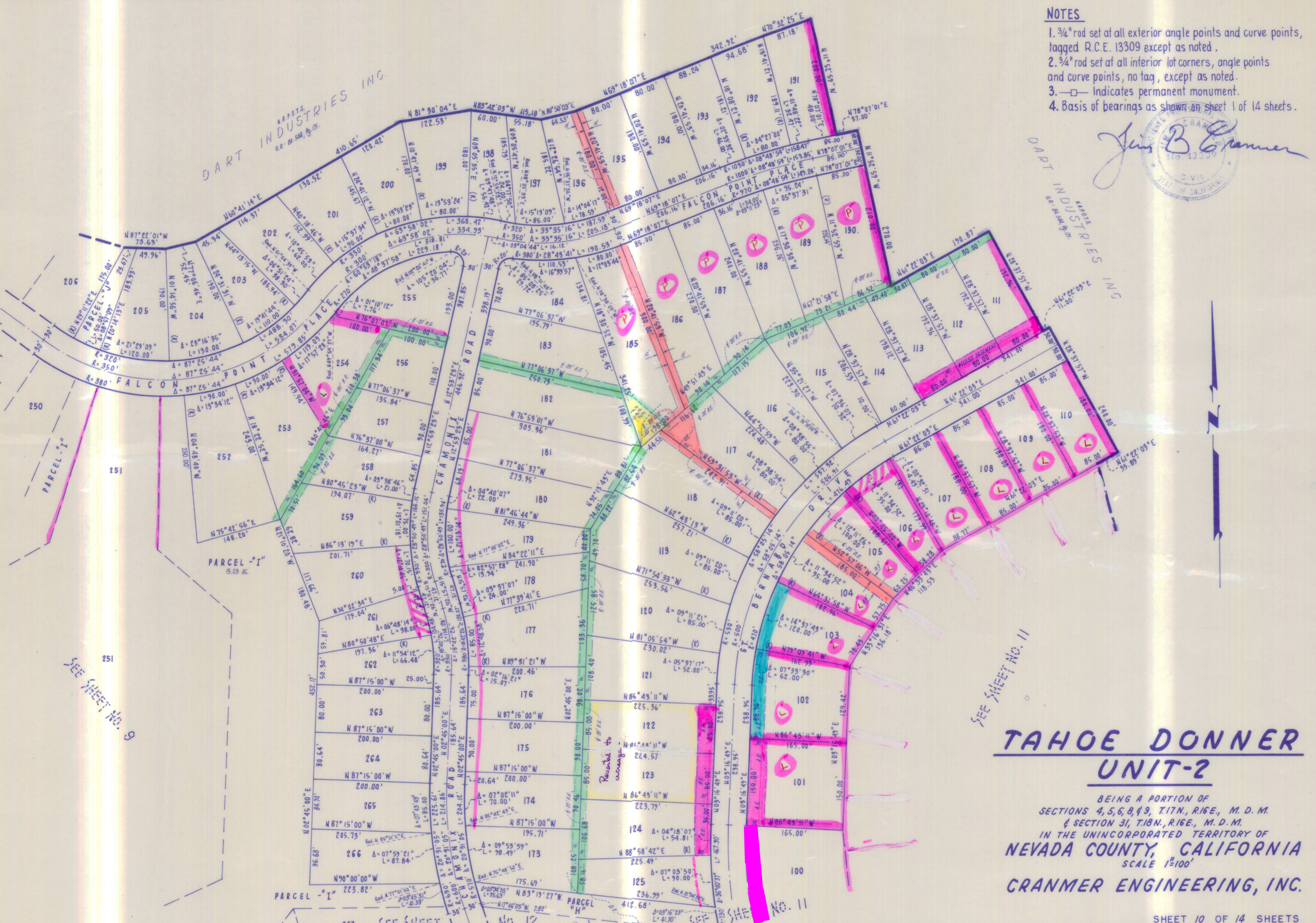
1. 3/4" rod set at all exterior angle points and curve points, tagged R.C.E. 13309 except as noted.
2. 3/4" rod set at all interior lot corners, angle points and curve points, no tag, except as noted.
3.  Indicates permanent monument.
4. Basis of bearings as shown on sheet 1 of 14 sheets.

Jim B. Cranmer
 CIVIL ENGINEER
 STATE OF CALIFORNIA
 No. 13339

SEE SHEET NO. 6

SEE SHEET NO. 9

SEE SHEET NO. 11



**TAHOE DONNER
 UNIT-2**

BEING A PORTION OF
 SECTIONS 4, 5, 6, 8, & 9, T17N, R16E, M. D. M.
 & SECTION 31, T18N, R16E, M. D. M.
 IN THE UNINCORPORATED TERRITORY OF
NEVADA COUNTY, CALIFORNIA
 SCALE 1"=100'
CRANMER ENGINEERING, INC.

SHEET 10 OF 14 SHEETS

Access easement
 to Lot 99

UNIT 2-10