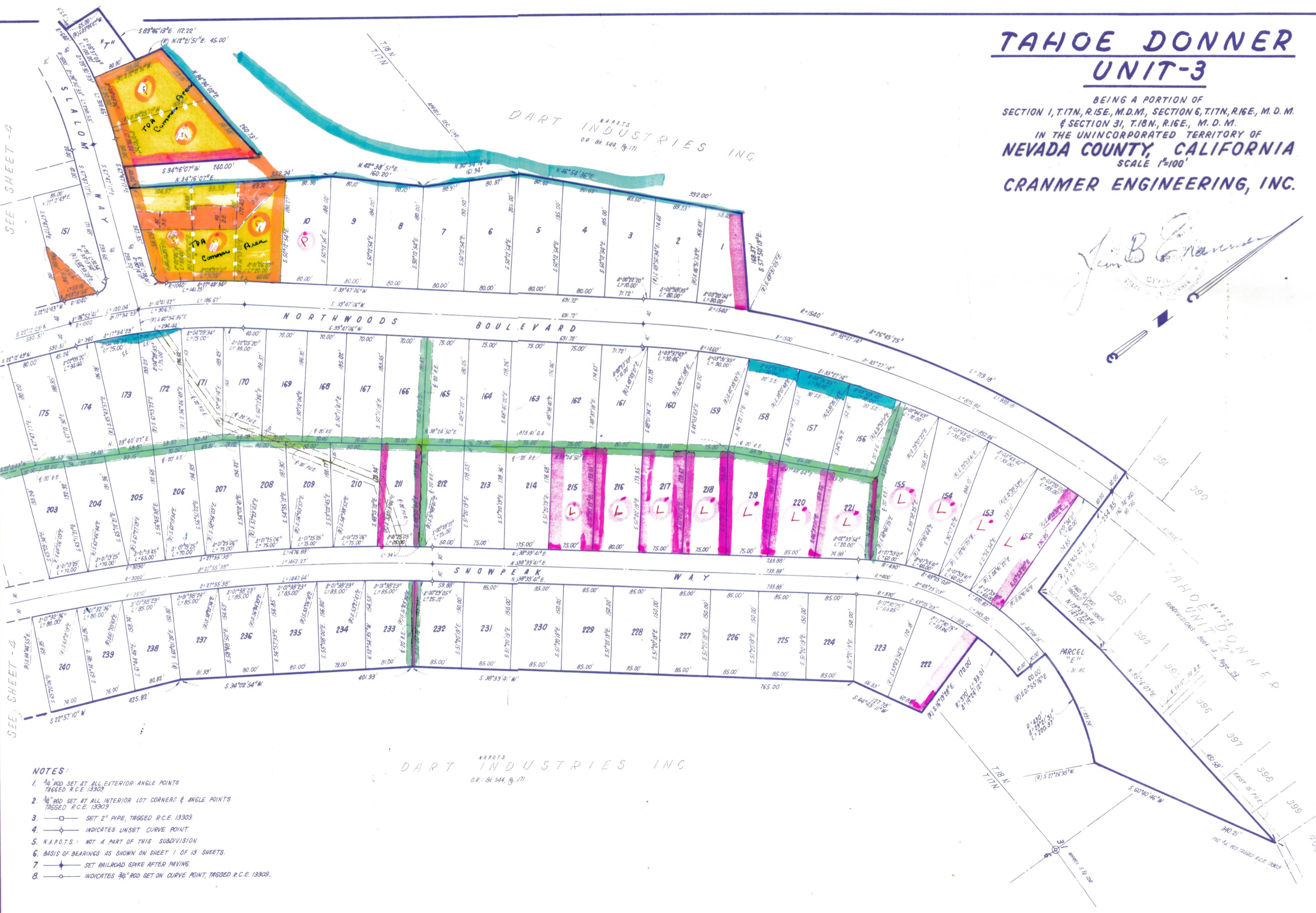


TAHOE DONNER UNIT-3

BEING A PORTION OF
SECTION 1, T.17N, R.15E, M.D.M, SECTION 6, T.17N, R.16E, M. D. M.
& SECTION 31, T.18N, R.16E., M. D. M.
IN THE UNINCORPORATED TERRITORY OF
NEVADA COUNTY, CALIFORNIA
SCALE 1"=100'

CRANMER ENGINEERING, INC.

SEE SHEET -4



Jim B. Cranmer
CRANMER ENGINEERING, INC.

- NOTES:**
- 3/4" ROD SET AT ALL EXTERIOR ANGLE POINTS TAGGED R.C.E. 13303
 - 3/4" ROD SET AT ALL INTERIOR LOT CORNERS & ANGLE POINTS TAGGED R.C.E. 13303
 - SET 2" PIPE, TAGGED R.C.E. 13303
 - INDICATES UNSET CURVE POINT
 - N.A.P.O.T.S.: NOT A PART OF THIS SUBDIVISION
 - BASIS OF BEARINGS AS SHOWN ON SHEET 1 OF 13 SHEETS.
 - ★ SET RAILROAD SPIKE AFTER PAVING.
 - INDICATES 3/4" ROD SET ON CURVE POINT, TAGGED R.C.E. 13303.

N.A.P.O.T.S.
DART INDUSTRIES INC
O.R. 84-544, Pg. 171

UNIT 3-3