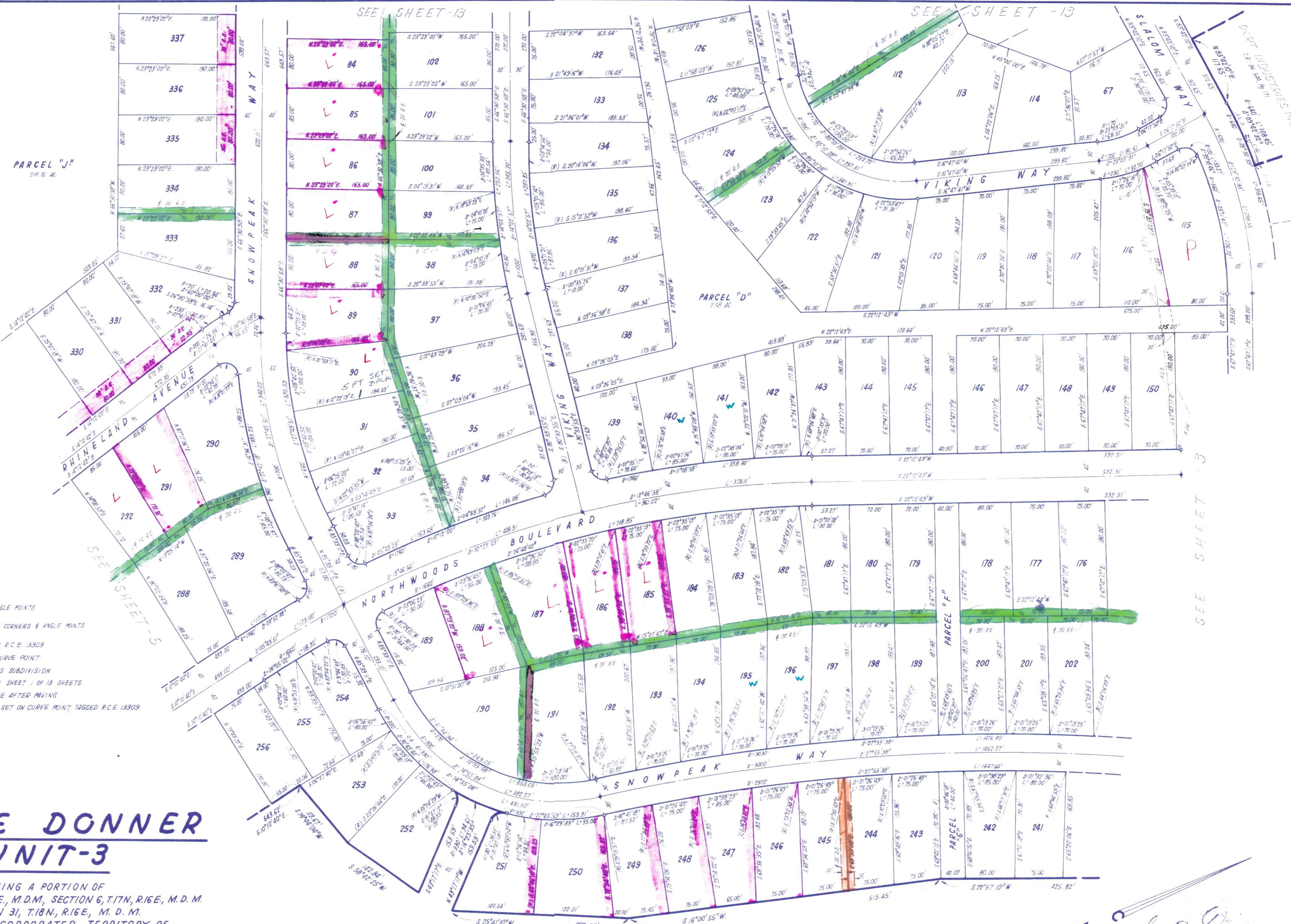


SEE SHEET - 6

SEE SHEET - 13

SEE SHEET - 13

SEE SHEET - 3



- NOTES:
1. 3/4" ROD SET AT ALL EXTERIOR ANGLE POINTS TAGGED R.C.E. 13309
 2. 3/4" ROD SET AT ALL INTERIOR LOT CORNERS & ANGLE POINTS TAGGED R.C.E. 13309
 3. SET 2" PIPE TAGGED R.C.E. 13309
 4. INDICATES UNSET CURVE POINT
 5. N.A.P.'S: NOT A PART OF THIS SUBDIVISION
 6. BASIS OF BEARINGS AS SHOWN ON SHEET 1 OF 13 SHEETS.
 7. SET RAILROAD SPIKE AFTER PAVING
 8. INDICATES 3/4" ROD SET ON CURVE POINT, TAGGED R.C.E. 13309

TAHOE DONNER UNIT-3

BEING A PORTION OF SECTION 1, T.17N, R.15E, M.D.M. SECTION 6, T.17N, R.16E, M.D.M. & SECTION 31, T.18N, R.16E, M.D.M. IN THE UNINCORPORATED TERRITORY OF NEVADA COUNTY, CALIFORNIA SCALE 1"=100'

CRANMER ENGINEERING, INC.

N.A.P.'S DART INDUSTRIES INC. O.R. 84 544 Pg 171

Tom B. Cranmer