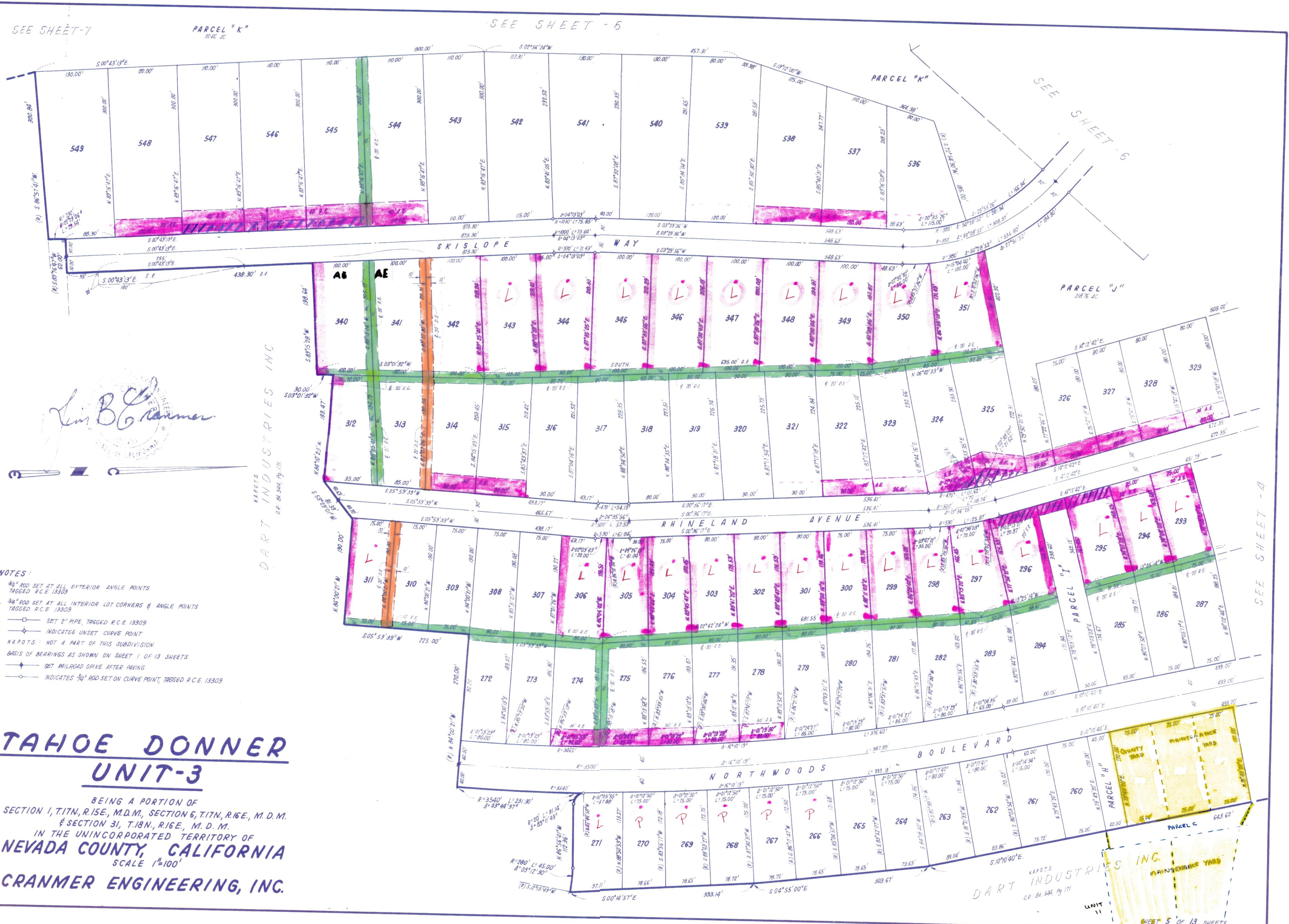


SEE SHEET - 7

SEE SHEET - 6

SEE SHEET - 6

SEE SHEET - 4



*Lin B. Cranmer*  
 LIN B. CRANMER  
 CIVIL ENGINEER  
 STATE OF CALIFORNIA  
 LICENSE NO. 10000

- NOTES:
1.  $\frac{3}{4}$ " ROD SET AT ALL EXTERIOR ANGLE POINTS TAGGED R.C.E. 13309
  2.  $\frac{3}{4}$ " ROD SET AT ALL INTERIOR LOT CORNERS & ANGLE POINTS TAGGED R.C.E. 13309
  3.  $\square$  SET 2" PIPE, TAGGED R.C.E. 13309
  4.  $\diamond$  INDICATES UNSET CURVE POINT
  5. N.A.P.O.T.S. = NOT A PART OF THIS SUBDIVISION
  6. BASIS OF BEARINGS AS SHOWN ON SHEET 1 OF 13 SHEETS
  7.  $\blacklozenge$  SET RAILROAD SPIKE AFTER PAVING
  8.  $\circ$  INDICATES  $\frac{3}{4}$ " ROD SET ON CURVE POINT, TAGGED R.C.E. 13309

# TAHOE DONNER UNIT-3

BEING A PORTION OF  
 SECTION 1, T.17N, R.15E, M.D.M., SECTION 6, T.17N, R.16E, M. D. M.  
 & SECTION 31, T.18N, R.16E, M. D. M.  
 IN THE UNINCORPORATED TERRITORY OF  
**NEVADA COUNTY, CALIFORNIA**  
 SCALE 1"=100'  
**CRANMER ENGINEERING, INC.**

DART INDUSTRIES INC.  
 MAPOTS  
 CR. BK. 544, PG. 171  
 UNIT 11  
 SHEET 5 OF 13 SHEETS

UNIT 3-5