

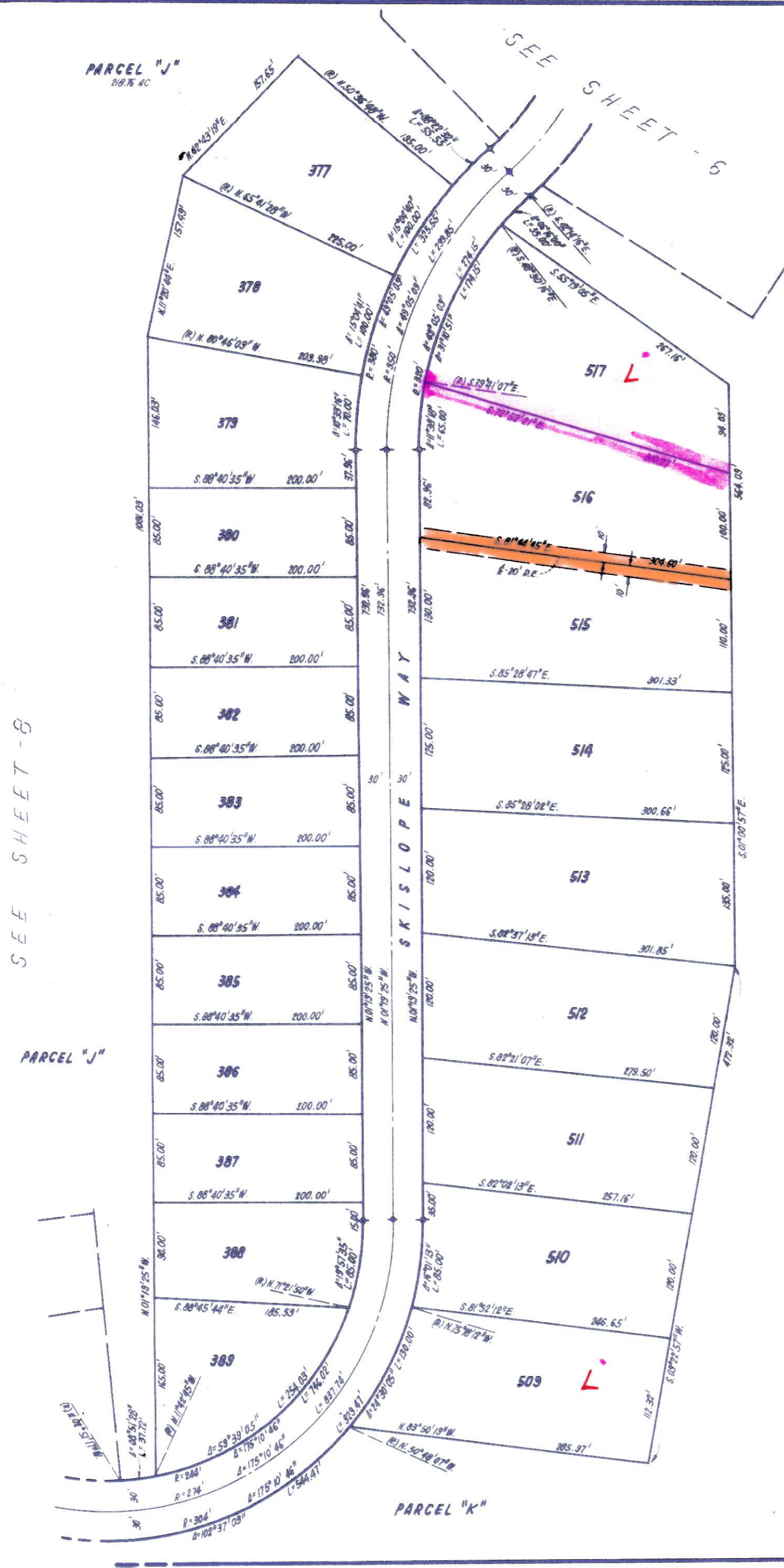
# TAHOE DONNER UNIT-3

BEING A PORTION OF  
SECTION 1, T.17N, R.15E, M.D.M., SECTION 6, T.17N, R.15E, M. D. M.  
& SECTION 31, T.18N, R.15E, M. D. M.  
IN THE UNINCORPORATED TERRITORY OF  
**NEVADA COUNTY, CALIFORNIA**  
SCALE 1"=100'  
**CRANMER ENGINEERING, INC.**



**NOTES:**

1. 3/4" ROD SET AT ALL EXTERIOR ANGLE POINTS TAGGED R.C.E. 13309.
2. 3/4" ROD SET AT ALL INTERIOR LOT CORNERS & ANGLE POINTS TAGGED R.C.E. 13309.
3. —○— SET 2" PIPE, TAGGED R.C.E. 13309.
4. —◇— INDICATES UNSET CURVE POINT.
5. N.A.P.O.T.S.: NOT A PART OF THIS SUBDIVISION.
6. BASIS OF BEARINGS AS SHOWN ON SHEET 1 OF 13 SHEETS.
7. —+— SET RAILROAD SPIKE AFTER PAYING.
8. —○— INDICATES 3/4" ROD SET ON CURVE POINT, TAGGED R.C.E. 13309.

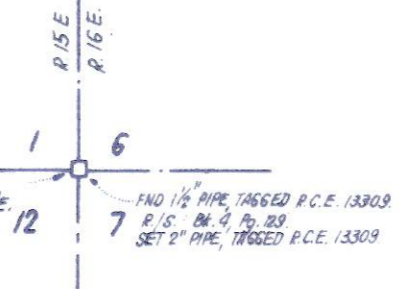


PARCEL "K"

SEE SHEET -5

PARCEL "K"  
360 AC.

N.A.P.O.T.S.  
**FIBREBOARD CORP.**  
O.R. - 84, 404, Pg. 121.



UNIT 3-7