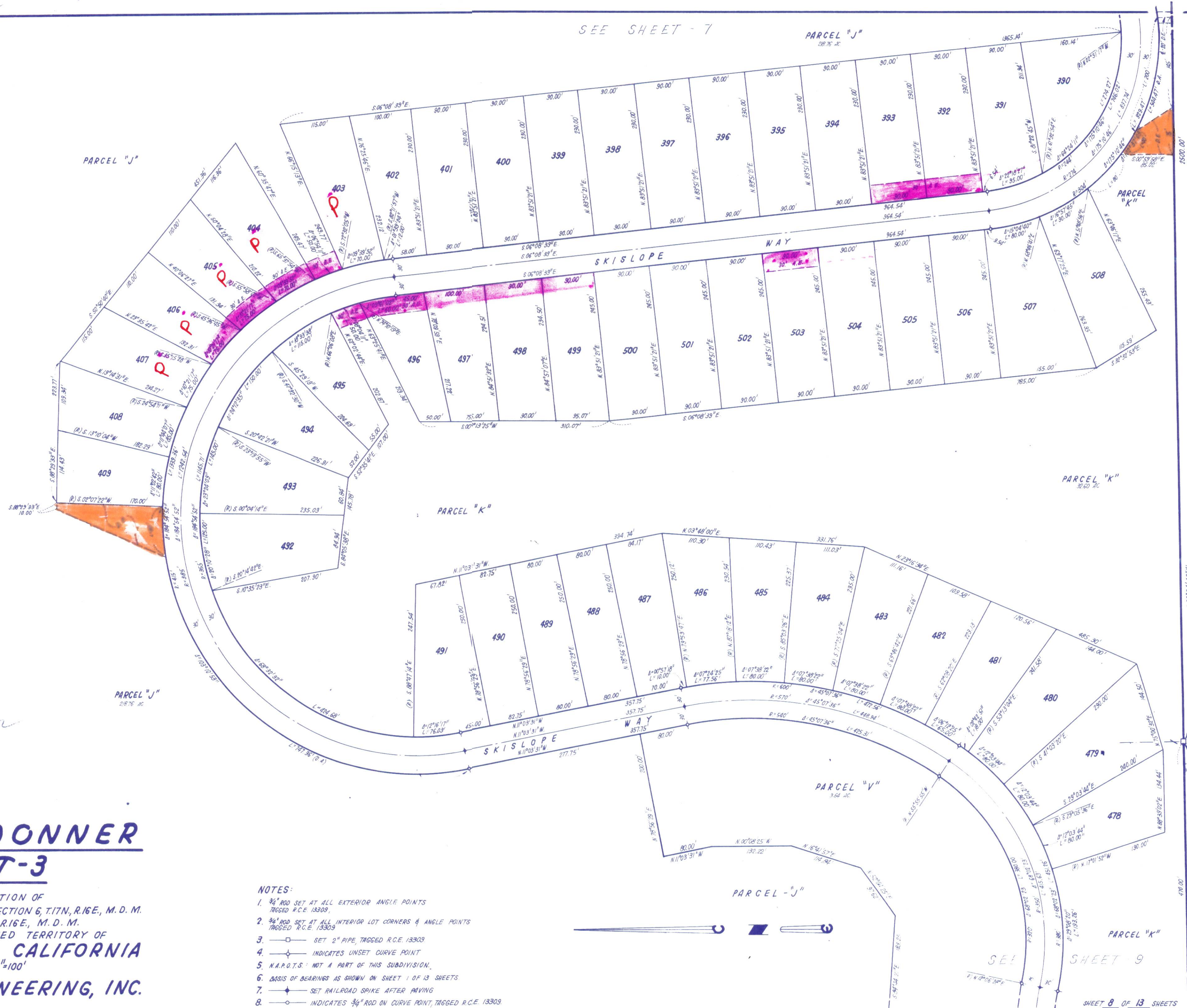


SEE SHEET - 7

PARCEL "J"



*J. B. Cranmer*

# TAHOE DONNER UNIT-3

BEING A PORTION OF  
SECTION 1, T.17N., R.15E., M.D.M., SECTION 6, T.17N., R.16E., M. D. M.  
& SECTION 31, T.18N., R.16E., M. D. M.  
IN THE UNINCORPORATED TERRITORY OF  
**NEVADA COUNTY, CALIFORNIA**  
SCALE 1"=100'

**CRANMER ENGINEERING, INC.**

**NOTES:**

- 3/4" ROD SET AT ALL EXTERIOR ANGLE POINTS  
TAGGED R.C.E. 13309.
- 3/4" ROD SET AT ALL INTERIOR LOT CORNERS & ANGLE POINTS  
TAGGED R.C.E. 13309.
- SET 2" PIPE, TAGGED R.C.E. 13309
- INDICATES UNSET CURVE POINT
- N.A.R.O.T.S.: NOT A PART OF THIS SUBDIVISION.
- BASIS OF BEARINGS AS SHOWN ON SHEET 1 OF 13 SHEETS
- ◆ SET RAILROAD SPIKE AFTER PAVING
- INDICATES 3/4" ROD ON CURVE POINT, TAGGED R.C.E. 13309

PARCEL "J"

SEE SHEET 9

SHEET 8 OF 13 SHEETS

UNIT 3 - 8

FIBRE BOARD CORP.