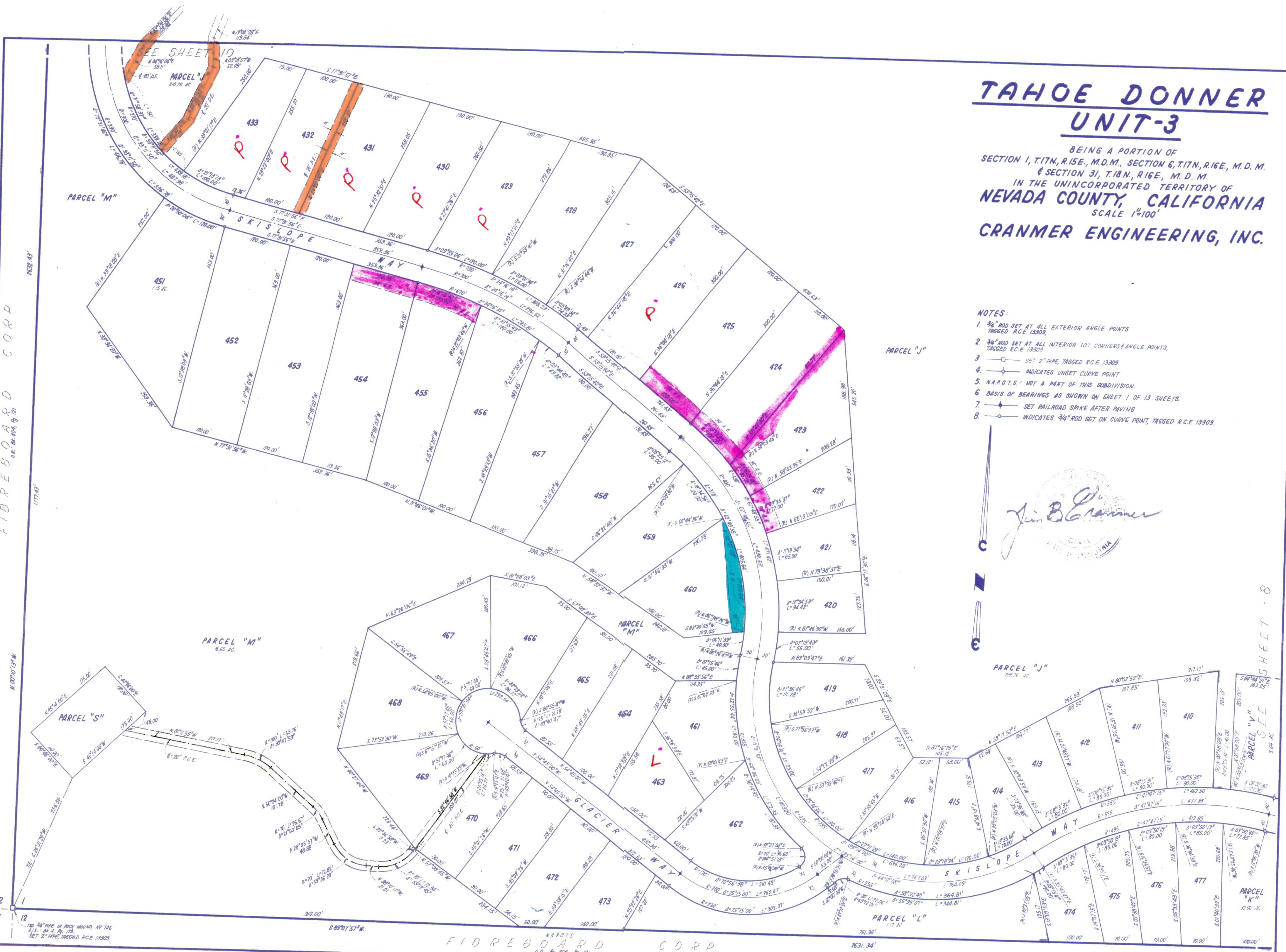


# TAHOE DONNER UNIT-3

BEING A PORTION OF  
SECTION 1, T.17N, R.15E., M.D.M., SECTION 6, T.17N, R.16E., M.D.M.  
& SECTION 31, T.18N, R.16E., M.D.M.  
IN THE UNINCORPORATED TERRITORY OF  
**NEVADA COUNTY, CALIFORNIA**  
SCALE 1"=100'  
**CRANMER ENGINEERING, INC.**

- NOTES:**
- 3/4" ROD SET AT ALL EXTERIOR ANGLE POINTS TAGGED R.C.E. 13309
  - 3/4" ROD SET AT ALL INTERIOR LOT CORNERS/ANGLE POINTS TAGGED R.C.E. 13309
  - SET 2" PIPE, TAGGED R.C.E. 13309
  - INDICATES UNSET CURVE POINT
  - N.A.P.O.T.S.: NOT A PART OF THIS SUBDIVISION
  - BASIS OF BEARINGS AS SHOWN ON SHEET 1 OF 13 SHEETS
  - SET RAILROAD SPIKE AFTER PAVING
  - INDICATES 3/4" ROD SET ON CURVE POINT, TAGGED R.C.E. 13309



FIBREBOARD CORP  
O.R. 404, 404, 19, 121

N. 00°10'13"W

2  
11

1/2" Ø 2" PIPE IN ROCK MOUND NO. 716  
S.E. 1/4 - 24 - 4 - 19 - 121  
SET 2" PIPE, TAGGED R.C.E. 13309

FIBREBOARD CORP  
N.A.P.O.T.S.  
O.R. 404, 404, 19, 121

7631.34'

SHEET 9 OF 13 SHEETS

UNIT 3-9

SEE SHEET - 8

L.6.W.

P.9-3