

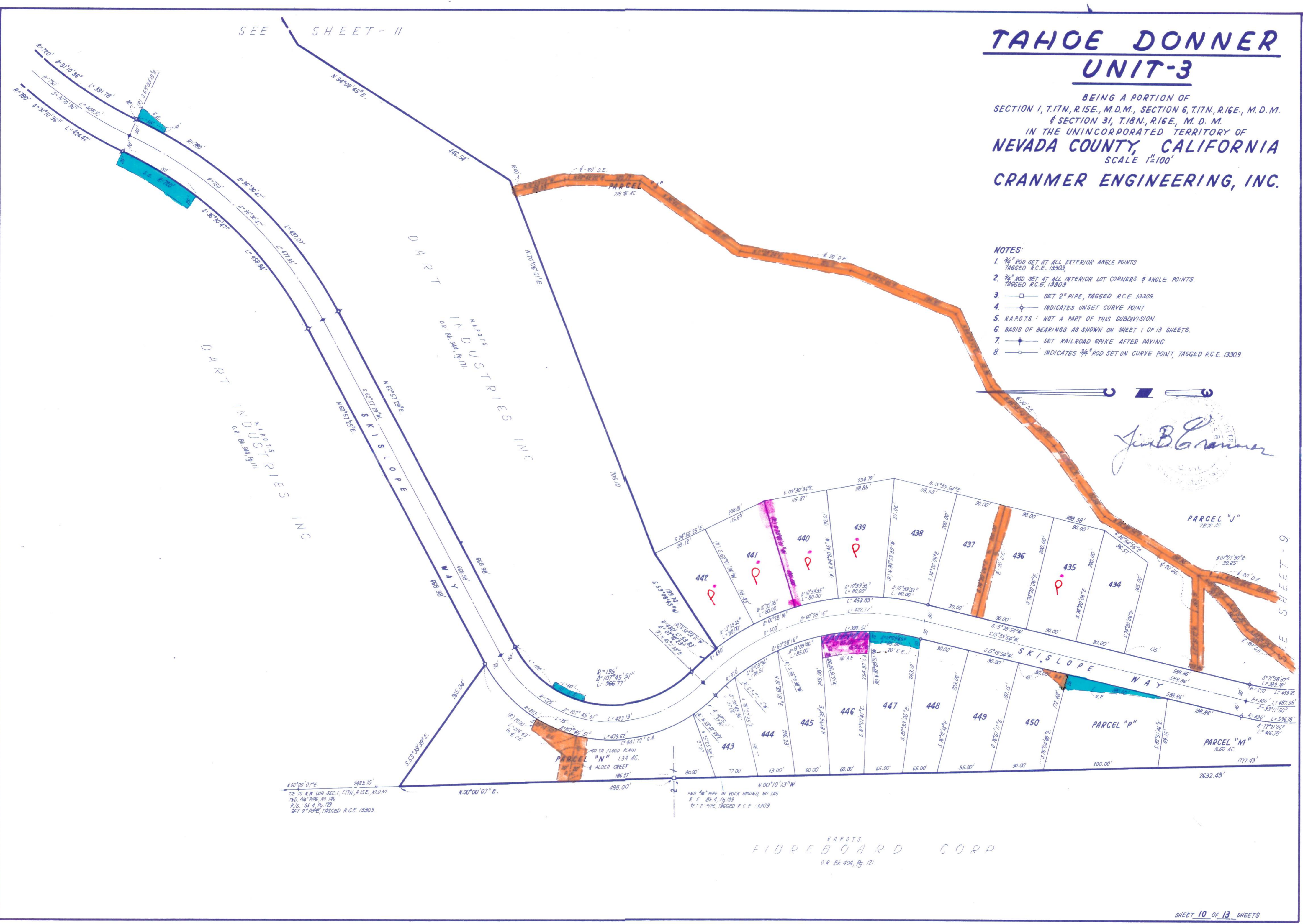
TAHOE DONNER UNIT-3

BEING A PORTION OF
SECTION 1, T.17N, R.15E., M.D.M., SECTION 6, T.17N, R.16E., M.D.M.
& SECTION 31, T.18N, R.16E., M.D.M.
IN THE UNINCORPORATED TERRITORY OF
NEVADA COUNTY, CALIFORNIA
SCALE 1"=100'
CRANMER ENGINEERING, INC.

NOTES:

1. 3/4" ROD SET AT ALL EXTERIOR ANGLE POINTS
TAGGED R.C.E. 13309.
2. 3/4" ROD SET AT ALL INTERIOR LOT CORNERS & ANGLE POINTS.
TAGGED R.C.E. 13309.
3. □ SET 2" PIPE, TAGGED R.C.E. 13309.
4. ◇ INDICATES UNSET CURVE POINT
5. N.A.P.O.T.S.: NOT A PART OF THIS SUBDIVISION.
6. BASIS OF BEARINGS AS SHOWN ON SHEET 1 OF 13 SHEETS.
7. + SET RAILROAD SPIKE AFTER PAVING
8. ○ INDICATES 3/4" ROD SET ON CURVE POINT, TAGGED R.C.E. 13309.

Jim B. Cranmer
CRANMER ENGINEERING, INC.
1000 S. 10TH ST. SUITE 100
TACOMA, WA 98402



N 00° 00' 07" E
2493.75
TIE TO N.W. COR. SEC. 1, T.17N, R.15E., M.D.M.
FIND 3/4" PIPE NO. 776
R/S: BK 9, Pg. 729
SET 2" PIPE, TAGGED R.C.E. 13309

FIND 3/4" PIPE IN ROCK MOUND, NO TAG
P. S. BK 9, Pg. 729
SET 2" PIPE, TAGGED R.C.E. 13309

N.A.P.O.T.S.
FIBREBOARD CORP
O.R. BK 404, Pg. 121

UNIT 3-10