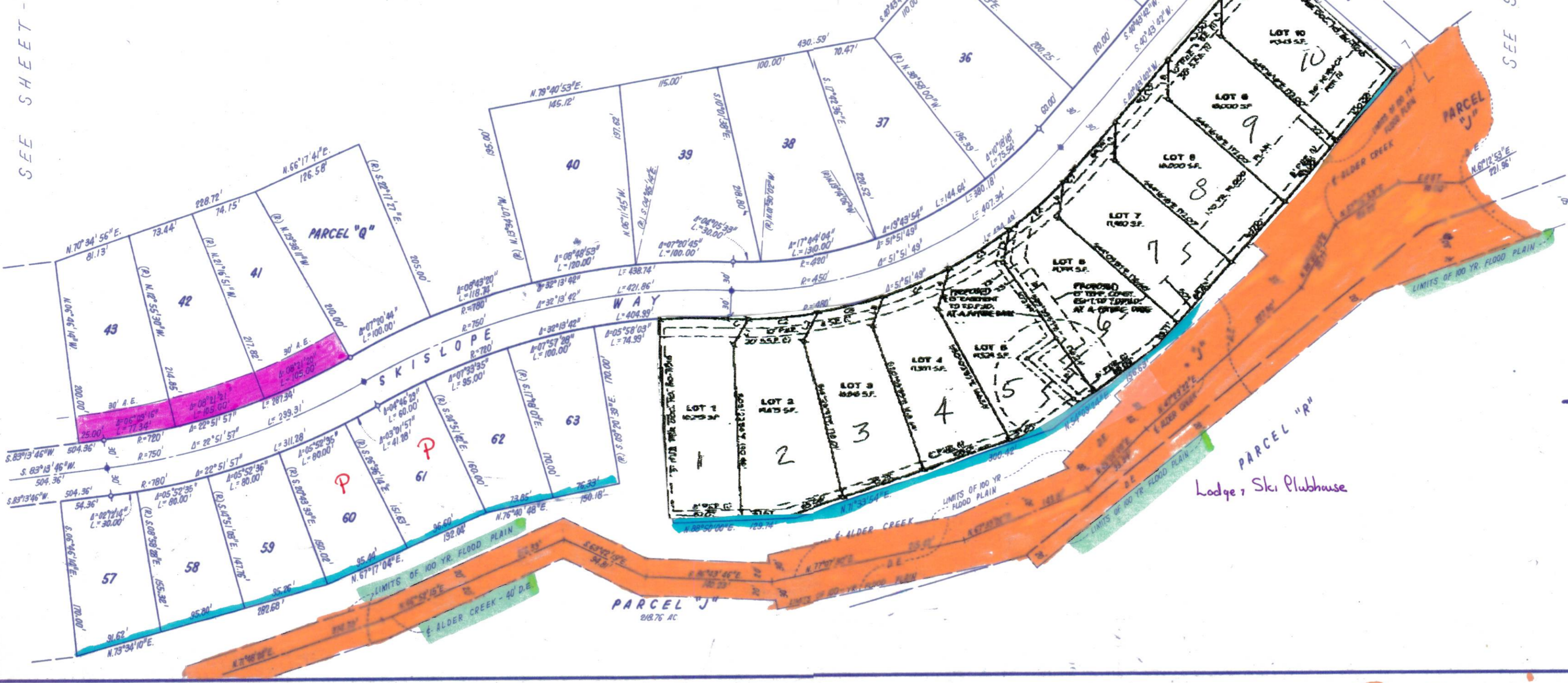


- NOTES:**
- 3/4" ROD SET AT ALL EXTERIOR ANGLE POINTS TAGGED R.C.E. 13309.
 - 3/4" ROD SET AT ALL INTERIOR LOT CORNERS & ANGLE POINTS TAGGED R.C.E. 13308.
 - SET 2" PIPE, TAGGED R.C.E. 13309
 - INDICATES UNSET CURVE POINT.
 - N.A.P.O.S. NOT A PART OF THIS SUBDIVISION.
 - BASIS OF BEARINGS AS SHOWN OF SHEET 1 OF 13 SHEETS.
 - SET RAILROAD SPIKE AFTER PAVING
 - INDICATES 3/4" ROD SET ON CURVE POINT, TAGGED R.C.E. 13303



TAHOE DONNER UNIT-3

BEING A PORTION OF SECTION 1, T.17N, R.15E., M.D.M., SECTION 6, T.17N, R.16E., M.D.M. & SECTION 31, T.18N, R.16E., M.D.M. IN THE UNINCORPORATED TERRITORY OF NEVADA COUNTY, CALIFORNIA

SCALE 1"=100'

CRANMER ENGINEERING, INC.

UNIT 3 - 12