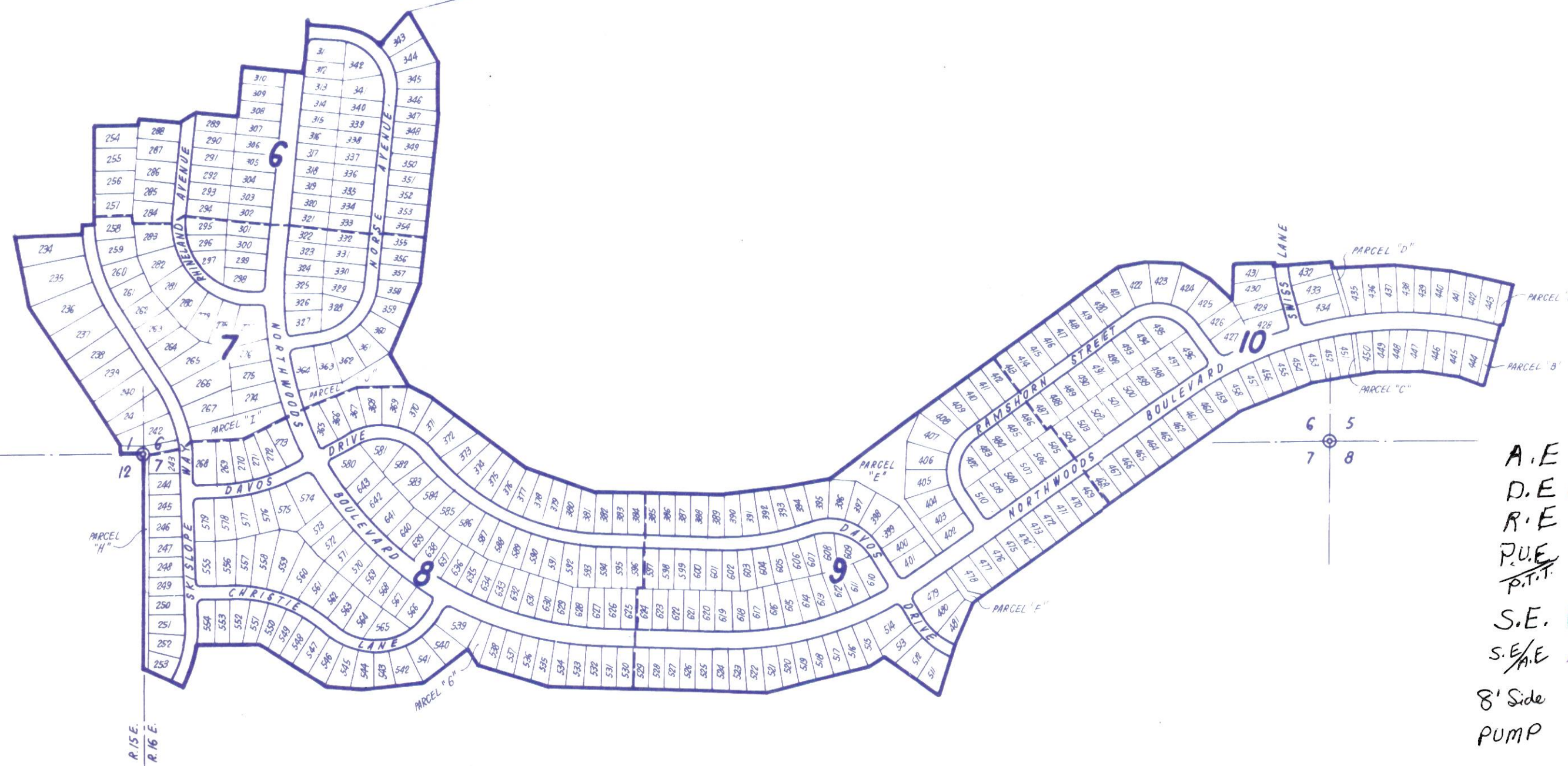
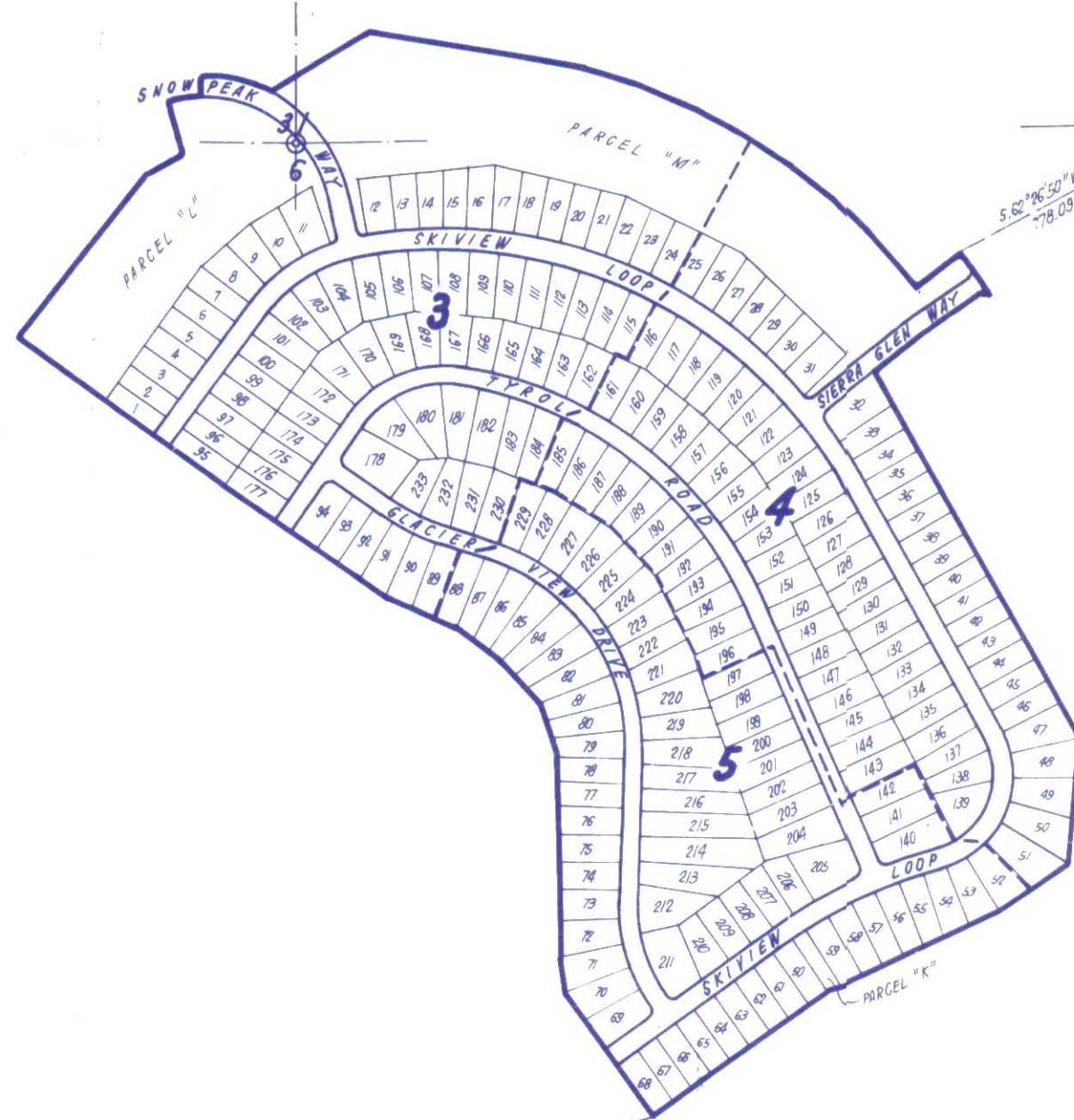
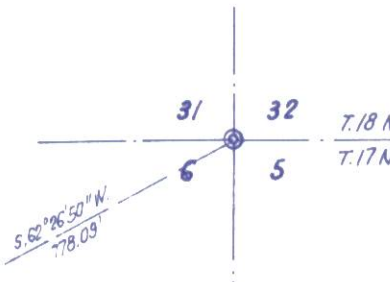
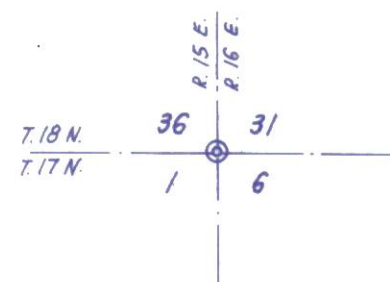
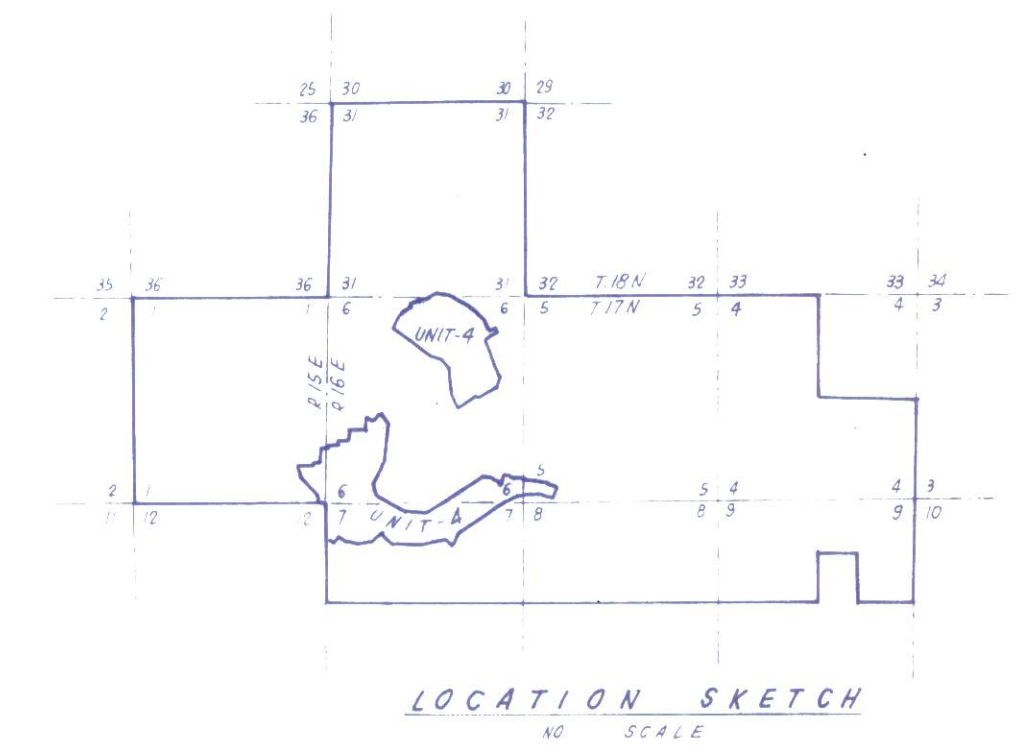


TAHOE DONNER UNIT-4

BEING A PORTION OF
 SEC. 1, T.17 N., R.15 E., M.D.M., SEC. 5, 6, & 7, T.17 N., R.16 E., M.D.M.
 & SEC. 31, T.18 N., R.16 E., M. D. M.
 IN THE UNINCORPORATED TERRITORY OF
NEVADA COUNTY, CALIFORNIA
 SCALE 1"=500'
CRANMER ENGINEERING, INC.



- A.E. [Orange]
- D.E. [Green]
- R.E. [Blue]
- P.U.E. [Purple]
- P.T. [Pink]
- S.E. [Light Blue]
- S.E./E. [Diagonal Lines]
- 8' Side PUMP [Red]



UNIT 4 - 2