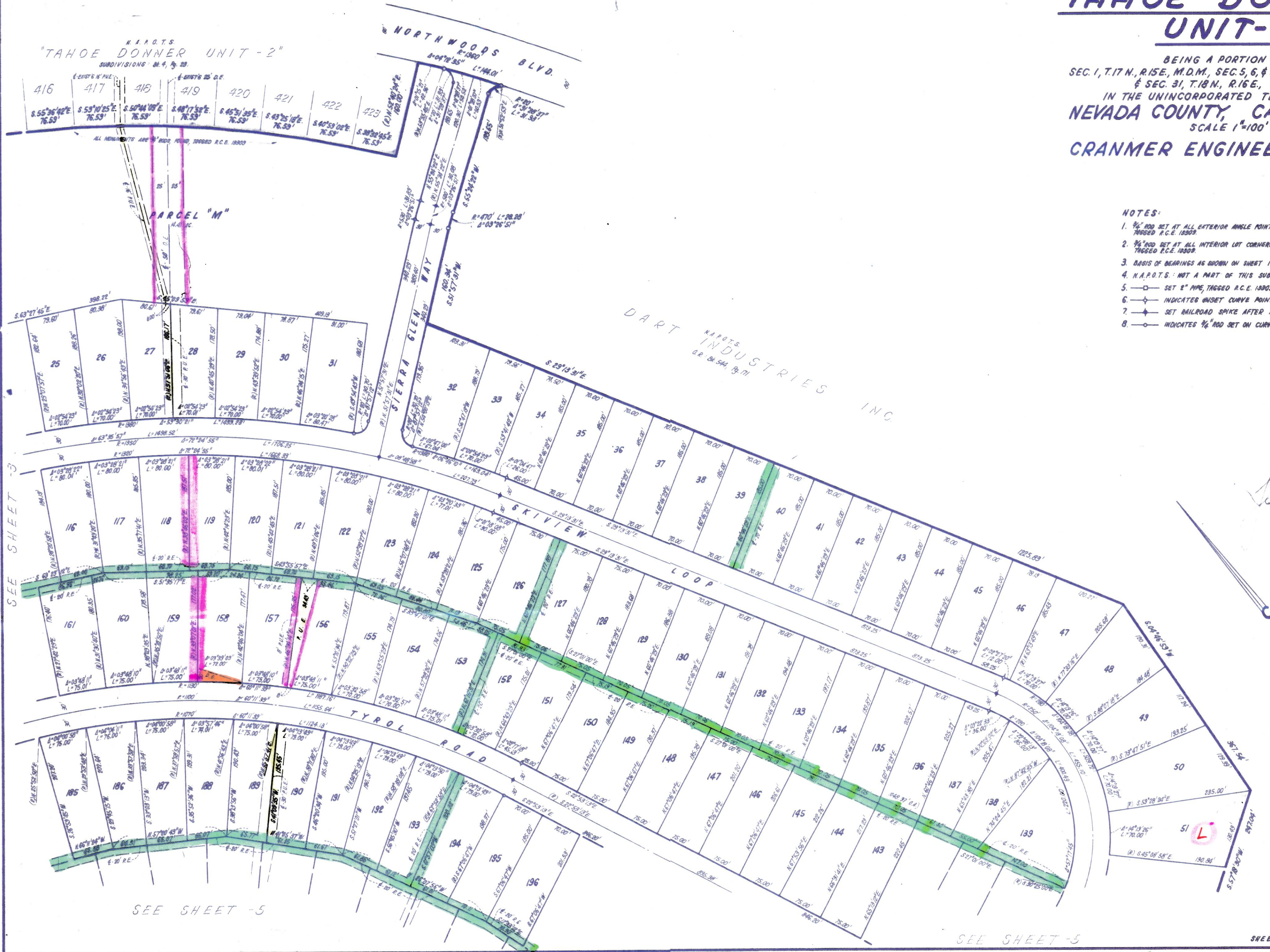


TAHOE DONNER UNIT-4

BEING A PORTION OF
SEC. 1, T.17 N., R.15 E., M.D.M., SEC. 5, 6, 7, T.17 N., R.15 E., M.D.M.
& SEC. 31, T.18 N., R.15 E., M.D.M.
IN THE UNINCORPORATED TERRITORY OF
NEVADA COUNTY, CALIFORNIA
SCALE 1"=100'
CRANMER ENGINEERING, INC.

- NOTES:**
1. 1/4" ROD SET AT ALL EXTERIOR ANGLE POINTS TAGGED R.C.E. 18303.
 2. 1/4" ROD SET AT ALL INTERIOR LOT CORNERS & ANGLE POINTS TAGGED R.C.E. 18303.
 3. BASIS OF BEARINGS AS SHOWN ON SHEET 1 OF 10 SHEETS.
 4. H.A.P.O.T.S.: NOT A PART OF THIS SUBDIVISION.
 5. SET 2" PIPE, TAGGED R.C.E. 18303.
 6. INDICATES UNSURFACED CURVE POINT.
 7. SET RAILROAD SPIKE AFTER PAVING.
 8. INDICATES 1/4" ROD SET ON CURVE POINT, TAGGED R.C.E. 18303.



DART MAPOTS INDUSTRIES INC
D.R. 04.544.19.71

San Borromeo

SEE SHEET -3

SEE SHEET -5

SEE SHEET -5

SHEET 4 of 10 SHEETS

UNIT 4 - 4