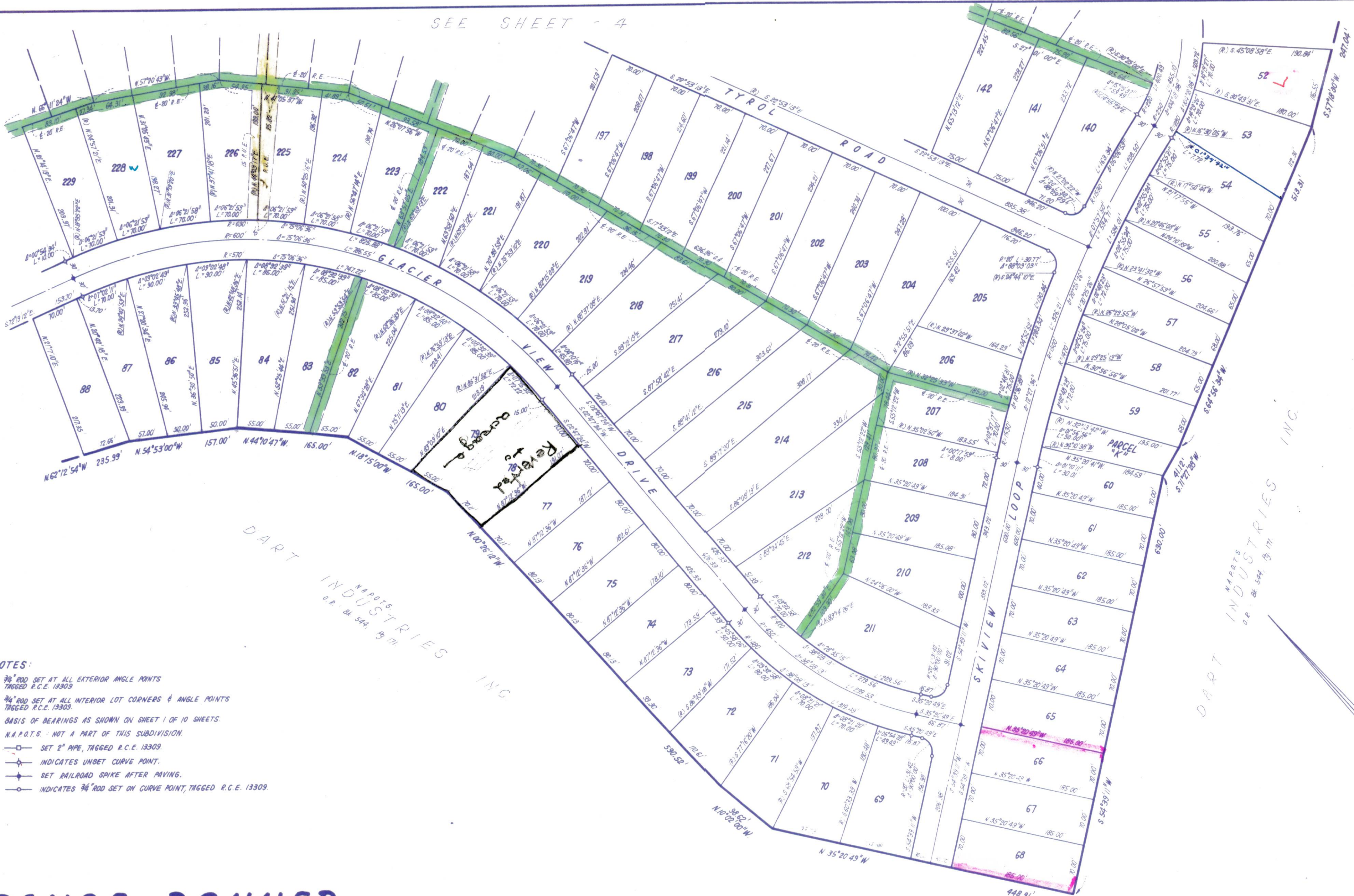


SEE SHEET - 4



SEE SHEET - 3

NOTES:

1. 3/4" ROD SET AT ALL EXTERIOR ANGLE POINTS TAGGED R.C.E. 13303
2. 3/4" ROD SET AT ALL INTERIOR LOT CORNERS & ANGLE POINTS TAGGED R.C.E. 13303
3. BASIS OF BEARINGS AS SHOWN ON SHEET 1 OF 10 SHEETS
4. N.A.P.O.S. - NOT A PART OF THIS SUBDIVISION
5. SET 2" PIPE, TAGGED R.C.E. 13309
6. INDICATES UNSET CURVE POINT.
7. SET RAILROAD SPIKE AFTER PAVING.
8. INDICATES 3/4" ROD SET ON CURVE POINT, TAGGED R.C.E. 13309.

# TAHOE DONNER UNIT-4

BEING A PORTION OF  
 SEC. 1, T.17N., R.15E., M.D.M., SEC. 5, 6, & 7, T.17N., R.16E., M.D.M.  
 & SEC. 31, T.18N., R.16E., M.D.M.  
 IN THE UNINCORPORATED TERRITORY OF  
**NEVADA COUNTY, CALIFORNIA**  
 SCALE 1"=100'

CRANMER ENGINEERING, INC.

DART INDUSTRIES INC.  
 N.A.P.O.S.  
 O.R. BK 544, P. 171

# UNIT 4-5