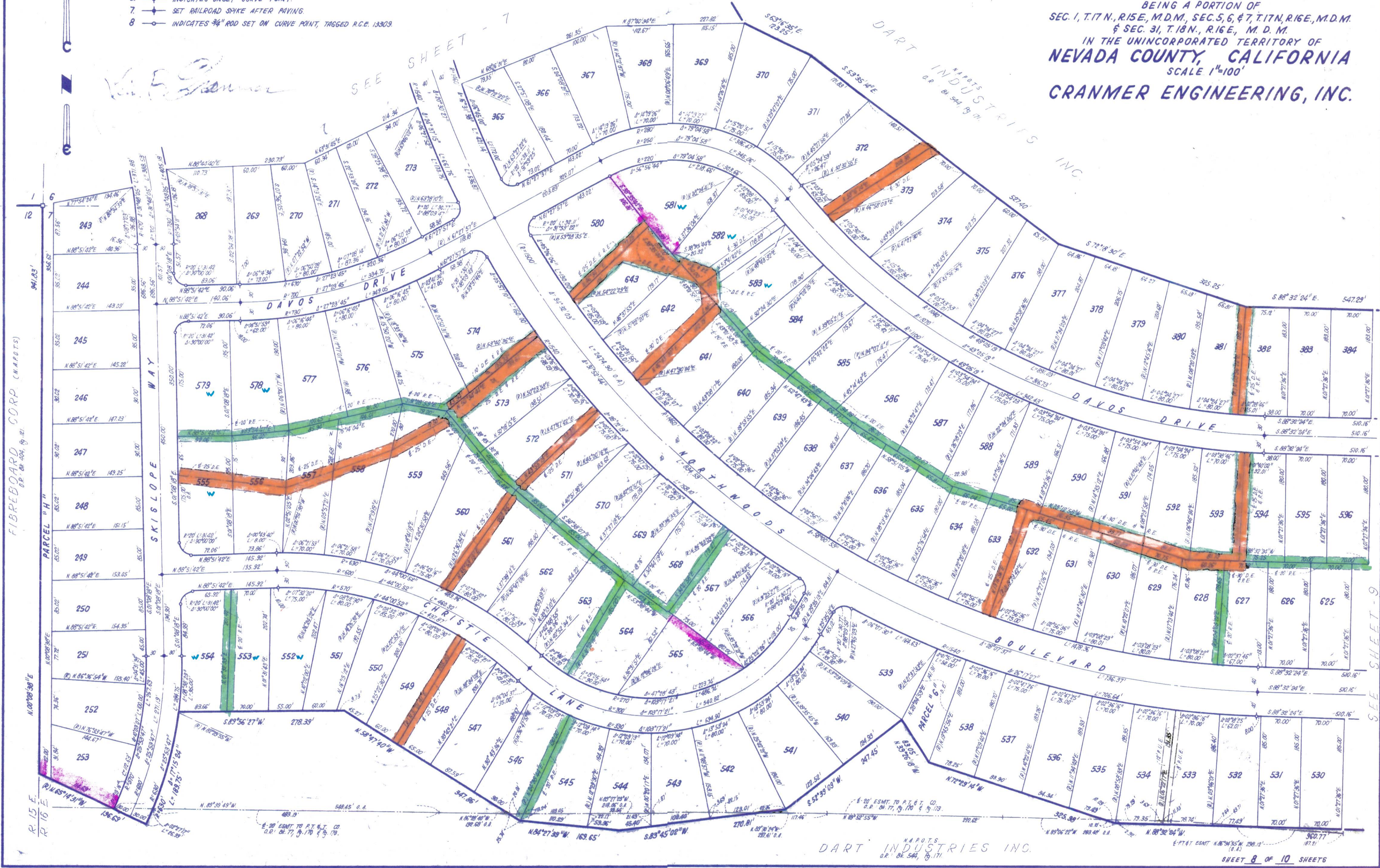


- NOTES:
1. $\frac{3}{4}$ " ROD SET AT ALL EXTERIOR ANGLE POINTS, TAGGED R.C.E. 13309.
 2. $\frac{3}{4}$ " ROD SET AT ALL INTERIOR LOT CORNERS & ANGLE POINTS, TAGGED R.C.E. 13309.
 3. BASIS OF BEARINGS AS SHOWN ON SHEET 1 OF 10 SHEETS.
 4. N.A.P.O.T.S. NOT A PART OF THIS SUBDIVISION.
 5. \square SET 2" PIPE, TAGGED R.C.E. 13309.
 6. \curvearrowright INDICATES UNSET CURVE POINT.
 7. \blacktriangleright SET RAILROAD SPIKE AFTER PAVING.
 8. \circ INDICATES $\frac{3}{4}$ " ROD SET ON CURVE POINT, TAGGED R.C.E. 13309.

TAHOE DONNER UNIT-4

BEING A PORTION OF
 SEC. 1, T.17 N., R.15 E., M.D.M., SEC. 5, 6, & 7, T.17 N., R.16 E., M.D.M.
 & SEC. 31, T.18 N., R.16 E., M. D. M.
 IN THE UNINCORPORATED TERRITORY OF
 NEVADA COUNTY, CALIFORNIA
 SCALE 1"=100'
CRANMER ENGINEERING, INC.



FIBREBOARD CORP. (N.A.P.O.T.S.)

SEE SHEET-9

DART INDUSTRIES INC.
 N.A.P.O.T.S. O.R. BK. 544, P. 171

SHEET 8 OF 10 SHEETS

UNIT 4-8