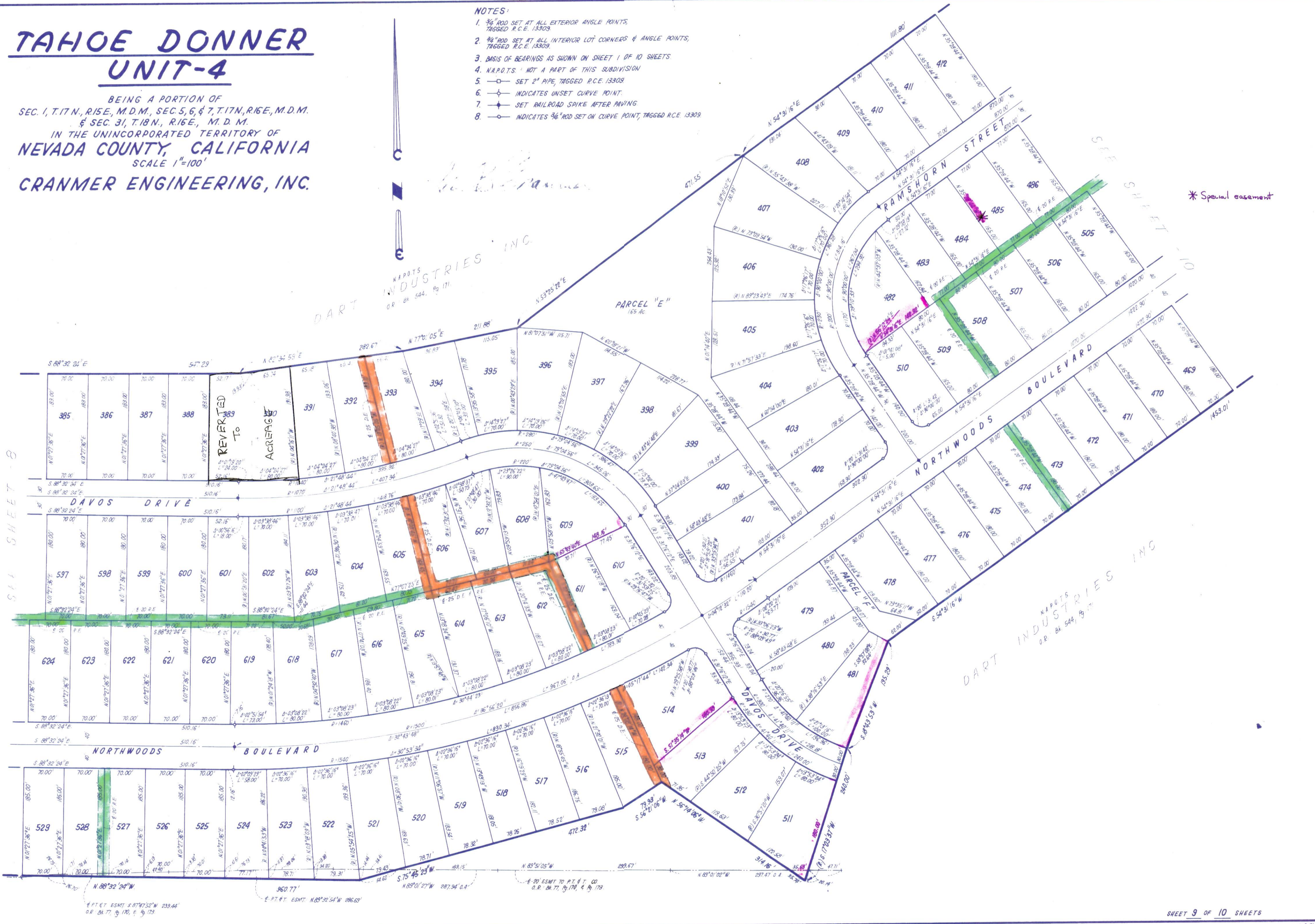


TAHOE DONNER UNIT-4

BEING A PORTION OF
SEC. 1, T.17 N., R.15 E., M.D.M., SEC. 5, 6, & 7, T.17 N., R.16 E., M.D.M.
& SEC. 31, T.18 N., R.16 E., M.D.M.
IN THE UNINCORPORATED TERRITORY OF
NEVADA COUNTY, CALIFORNIA
SCALE 1"=100'
CRANMER ENGINEERING, INC.

- NOTES:
1. 3/4" ROD SET AT ALL EXTERIOR ANGLE POINTS, TAGGED R.C.E. 13309.
 2. 3/4" ROD SET AT ALL INTERIOR LOT CORNERS & ANGLE POINTS, TAGGED R.C.E. 13309.
 3. BASIS OF BEARINGS AS SHOWN ON SHEET 1 OF 10 SHEETS.
 4. N.A.P.O.T.S. NOT A PART OF THIS SUBDIVISION.
 5. SET 2" PIPE, TAGGED R.C.E. 13309.
 6. INDICATES UNSET CURVE POINT.
 7. SET RAILROAD SPIKE AFTER PAVING.
 8. INDICATES 3/4" ROD SET ON CURVE POINT, TAGGED R.C.E. 13309.



* Special easement

S11 SHEET - 8

UNIT 4 - 9