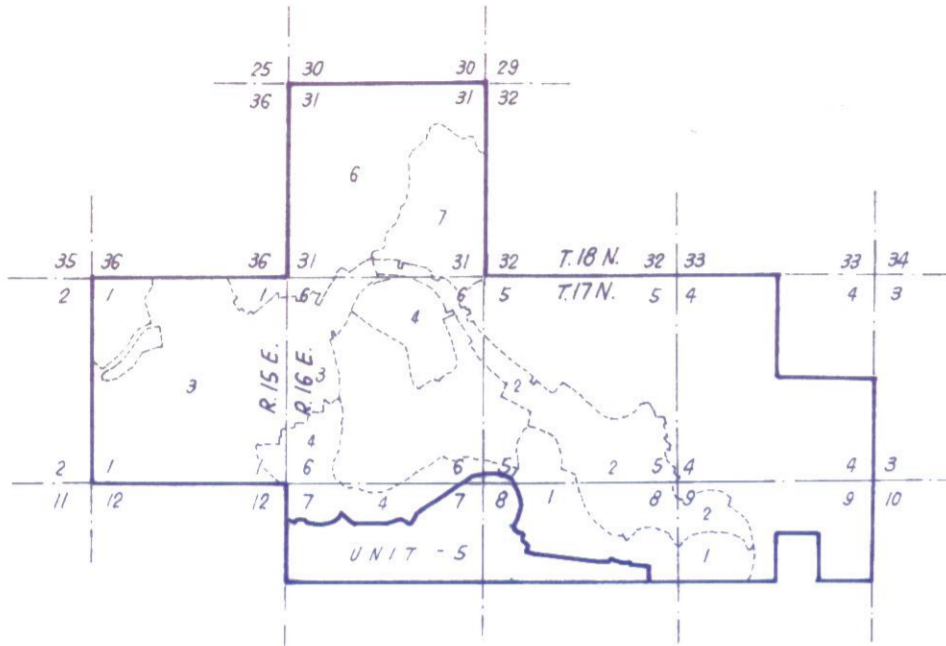


# TAHOE DONNER UNIT-5

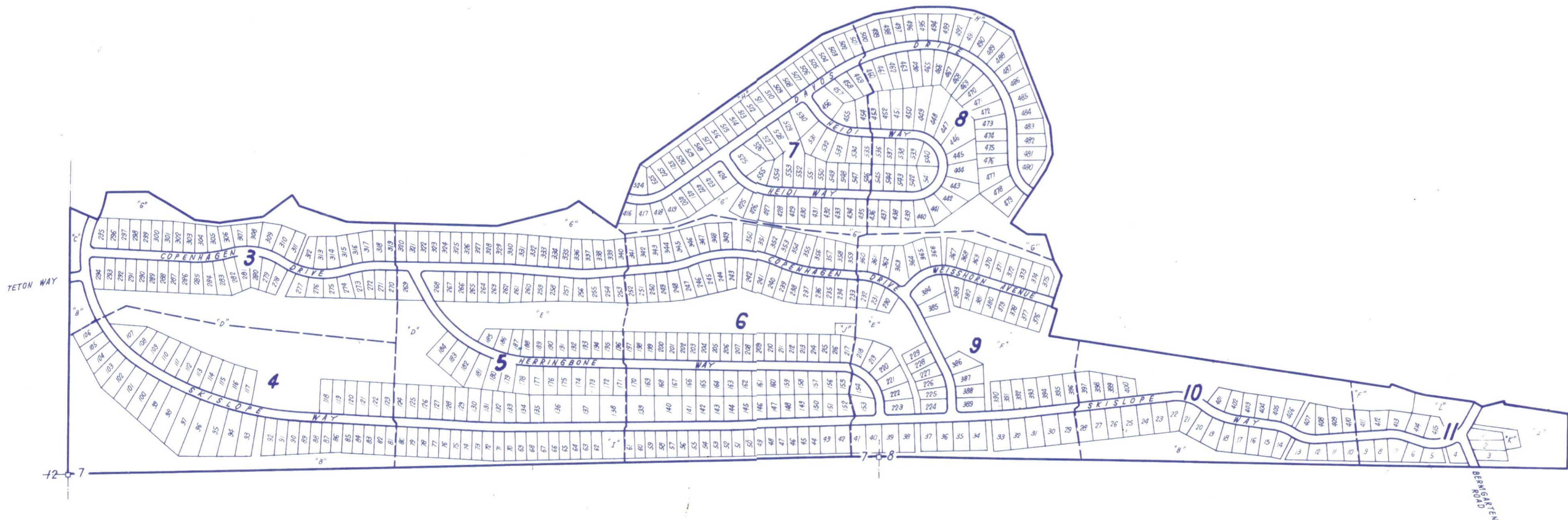
BEING A PORTION OF  
SECTION 5, 6, 7, & 8, T.17 N., R.16 E., M. D. M.  
IN THE UNINCORPORATED TERRITORY OF  
**NEVADA COUNTY, CALIFORNIA**  
SCALE 1"=500'

**CRANMER ENGINEERING, INC.**

L.B. Cranmer



LOCATION SKETCH  
NO SCALE



INDEX MAP  
SCALE 1"=500'

UNITS-2