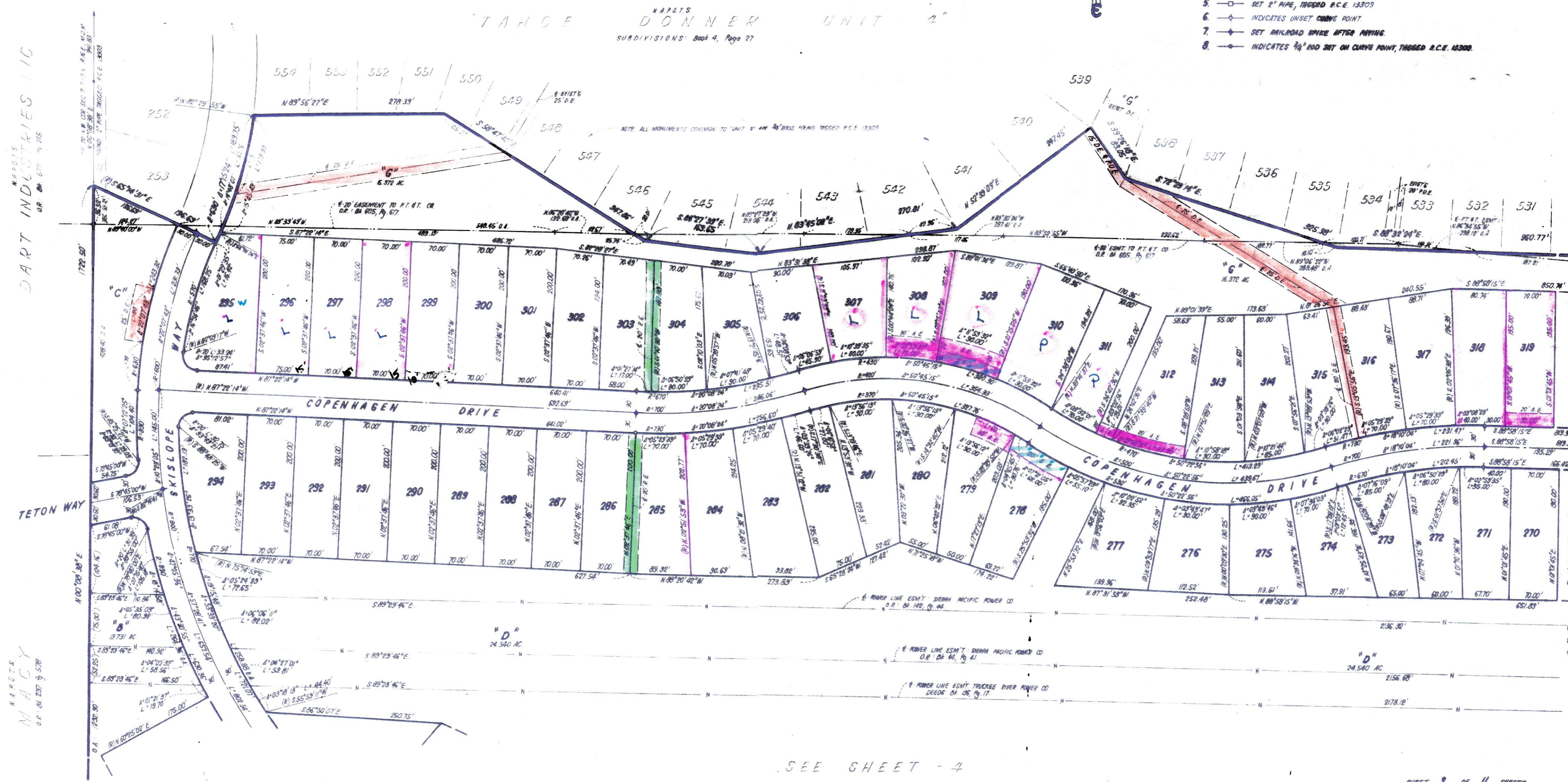


TAHOE DONNER UNIT-5

BEING A PORTION OF
SECTION 5, 6, 7, & 8, T.17N., R.16E., M. D. M.
IN THE UNINCORPORATED TERRITORY OF
NEVADA COUNTY, CALIFORNIA
SCALE 1"=100'

CRANMER ENGINEERING, INC.

- NOTES:
1. 3/4" ROD SET AT ALL EXTERIOR ANGLE POINTS, TAGGED R.C.E. 13309.
 2. 3/4" ROD SET AT ALL INTERIOR LOT CORNERS & ANGLE POINTS TAGGED R.C.E. 13309.
 3. BASIS OF BEARINGS AS SHOWN ON SHEET 1 OF 11 SHEETS.
 4. N.A.P.T.S. NOT A PART OF THIS SUBDIVISION.
 5. □ SET 2" PIPE, TAGGED R.C.E. 13309.
 6. ◇ INDICATES UNSET CURVE POINT.
 7. ◆ SET ANTI-ROAD SPIKE AFTER PAYING.
 8. ○ INDICATES 3/4" ROD SET ON CURVE POINT, TAGGED R.C.E. 13309.



DART INDUSTRIES, INC.
D.P. 04-579-19-215

M.A.C.T.S.
D.P. 04-237-19-520

SEE SHEET - 4

SHEET 3 OF 11 SHEETS

UNIT-5-3