

# TAHOE DONNER UNIT-5

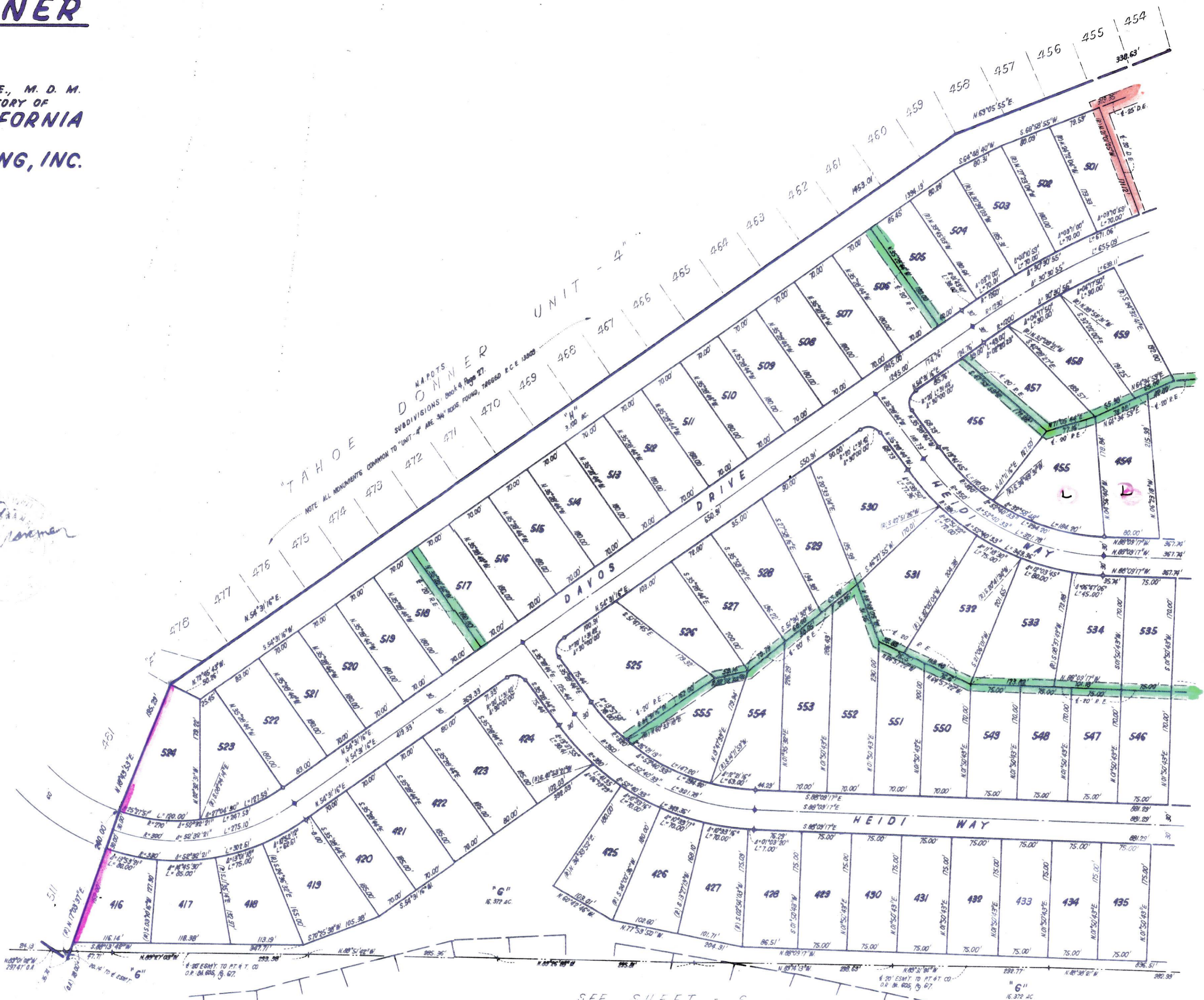
BEING A PORTION OF  
SECTION 5, 6, 7, & 8, T.17 N., R.16 E., M. D. M.  
IN THE UNINCORPORATED TERRITORY OF  
NEVADA COUNTY, CALIFORNIA  
SCALE 1"=100'

GRANMER ENGINEERING, INC.

**NOTES:**

1. 1/4" ROD SET AT ALL EXTERIOR ANGLE POINTS, TAGGED R.C.E. 13303.
2. 3/8" ROD SET AT ALL INTERIOR LOT CORNERS & ANGLE POINTS, TAGGED R.C.E. 13303.
3. BASIS OF BEARINGS AS KNOWN ON SHEET 1 OF 11 SHEETS.
4. N.A.P.O.T.S. NOT A PART OF THIS SUBDIVISION.
5. SET 2" PIPE, TAGGED R.C.E. 13303.
6. INDICATES UNMET CURVE POINT.
7. SET RAILROAD SPIKE AFTER PAVING.
8. INDICATES 3/8" ROD SET ON CURVE POINT, TAGGED R.C.E. 13303.

*L.B. Granmer*



SEE SHEET - 6

SHEET 7 OF 11 SHEETS

UNIT 5-7

SEE SHEET - 8

L.G.M.

P-5