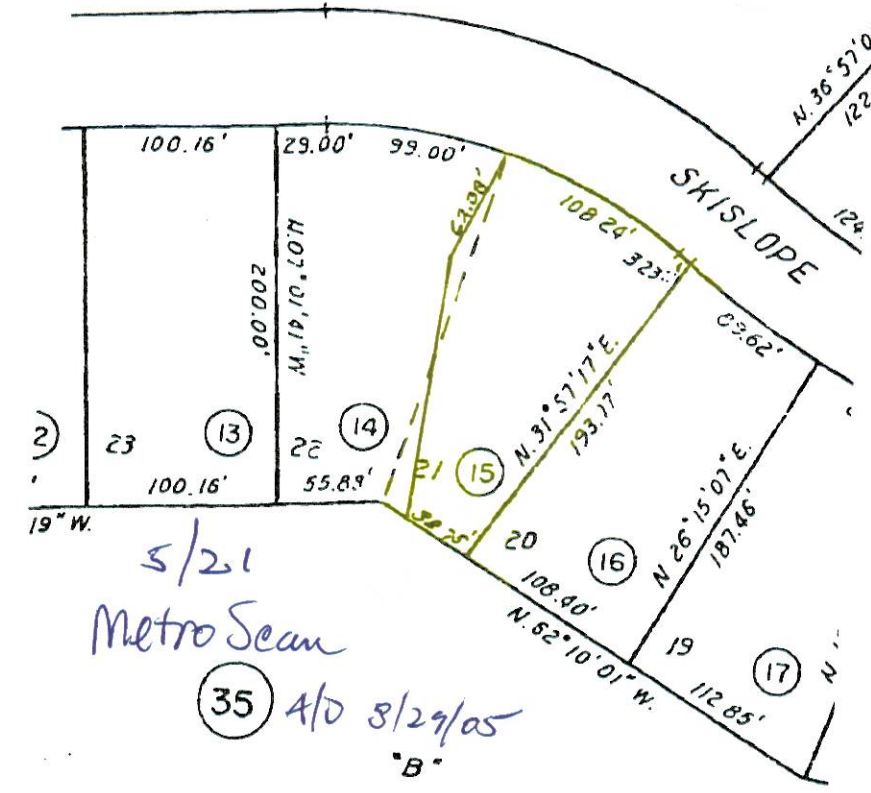
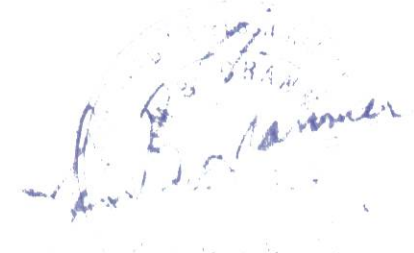


TAHOE DONNER UNIT-5

BEING A PORTION OF
SECTION 5, 6, 7, & 8, T.17 N., R.16 E., M. D. M.
IN THE UNINCORPORATED TERRITORY OF
NEVADA COUNTY, CALIFORNIA
SCALE 1"=100'
CRANMER ENGINEERING, INC.

- NOTES:**
- 3/4" ROD SET AT ALL EXTERIOR ANGLE POINTS, TAGGED R.C.E. 13309
 - 3/4" ROD SET AT ALL INTERIOR LOT CORNERS & ANGLE POINTS, TAGGED R.C.E. 13309
 - BASIS OF BEARINGS AS SHOWN ON SHEET 1 OF 11 SHEETS
 - N.A.P.O.T.S. - NOT A PART OF THIS SUBDIVISION
 - SET 2" PIPE, TAGGED R.C.E. 13309
 - INDICATES UNSET CURVE POINT
 - ◆ SET RAILROAD SPIKE AFTER PAVING
 - INDICATES 3/4" ROD SET ON CURVE POINT, TAGGED R.C.E. 13309



5/21
Metro Sean
35 A/D 8/29/05
B



TRUCKEE PUBLIC UTILITY DISTRICT

SEE SHEET - 9

SEE SHEET - 11