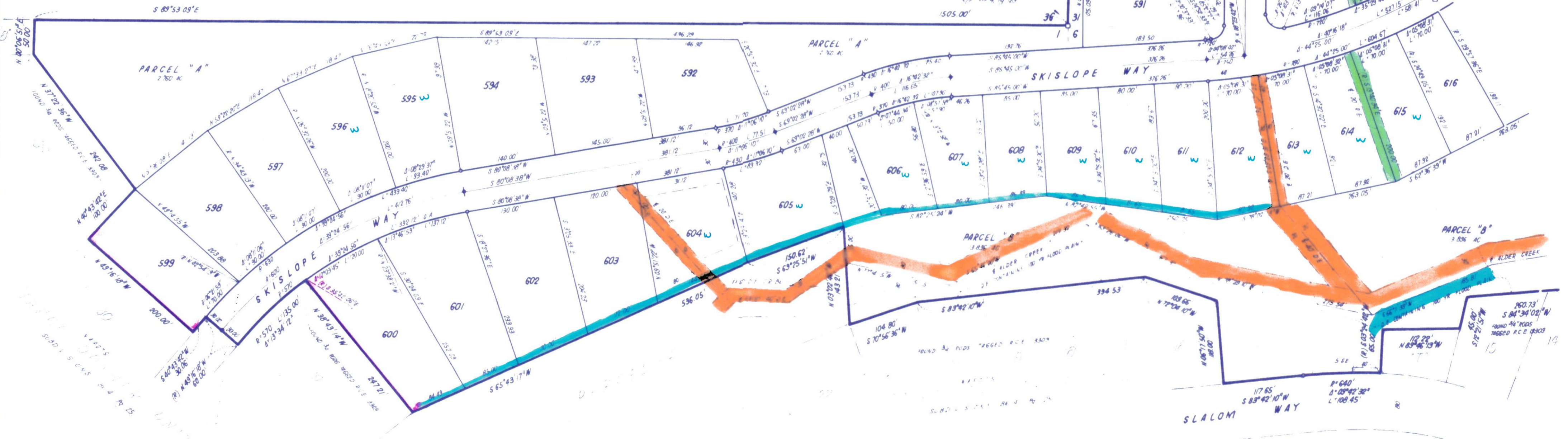
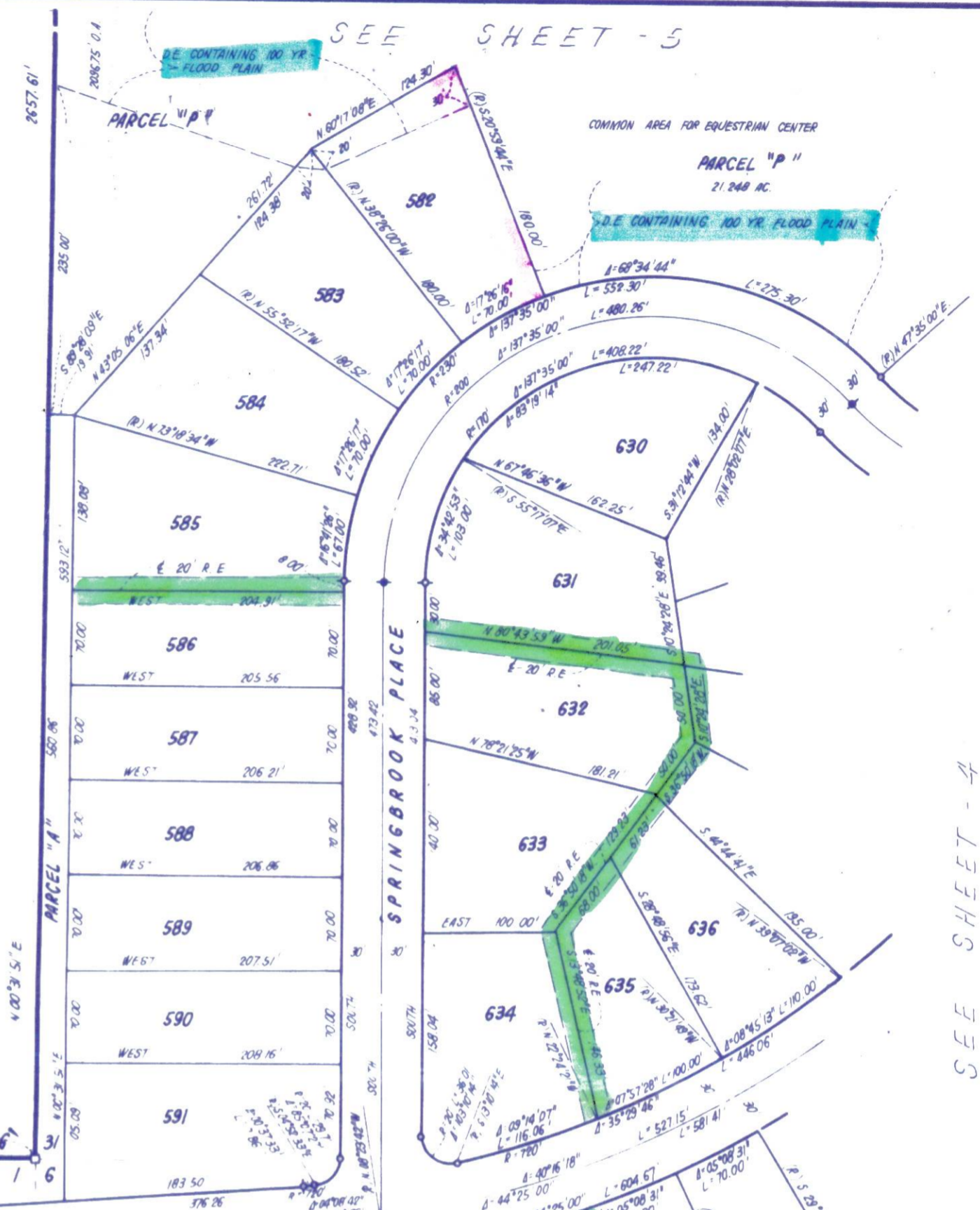


TAHOE DONNER UNIT-6

BEING A PORTION OF
SEC. 1, T.17N., R.15E., M.D.M., SEC. 6, T.17N., R.16E., M.D.M.
& SEC. 31, T.18N., R.16E., M.D.M.
IN THE UNINCORPORATED TERRITORY OF
NEVADA COUNTY, CALIFORNIA
SCALE 1"=100'
CRANMER ENGINEERING, INC.

Jim B Cranmer

- NOTES:
1. 3/4" ROD SET AT ALL EXTERIOR ANGLE POINTS, TAGGED R.C.E. 13309
 2. 3/4" ROD SET AT ALL INTERIOR LOT CORNERS & ANGLE POINTS, TAGGED R.C.E. 13309
 3. BASIS OF BEARINGS AS SHOWN ON SHEET 1 OF 12 SHEETS
 4. NAPOTS: NOT A PART OF THIS SUBDIVISION
 5. SET 2" PIPE, TAGGED R.C.E. 13309
 6. INDICATES UNSET CURVE POINT
 7. SET RAILROAD SPIKE AFTER PAVING
 8. INDICATES 3/4" ROD SET ON CURVE POINT, TAGGED R.C.E. 13309



SEE SHEET - 4