

TAHOE DONNER UNIT-6

BEING A PORTION OF
SEC. 1, T.17N., R.15E., M.D.M., SEC. 6, T.17N., R.16E., M.D.M.
& SEC. 31, T.18N., R.16E., M.D.M.
IN THE UNINCORPORATED TERRITORY OF
NEVADA COUNTY, CALIFORNIA
SCALE 1"=100'
CRANMER ENGINEERING, INC.

Jim B Cranmer

DART INDUSTRIES, INC.
D.P. 84, 544, 19, 171

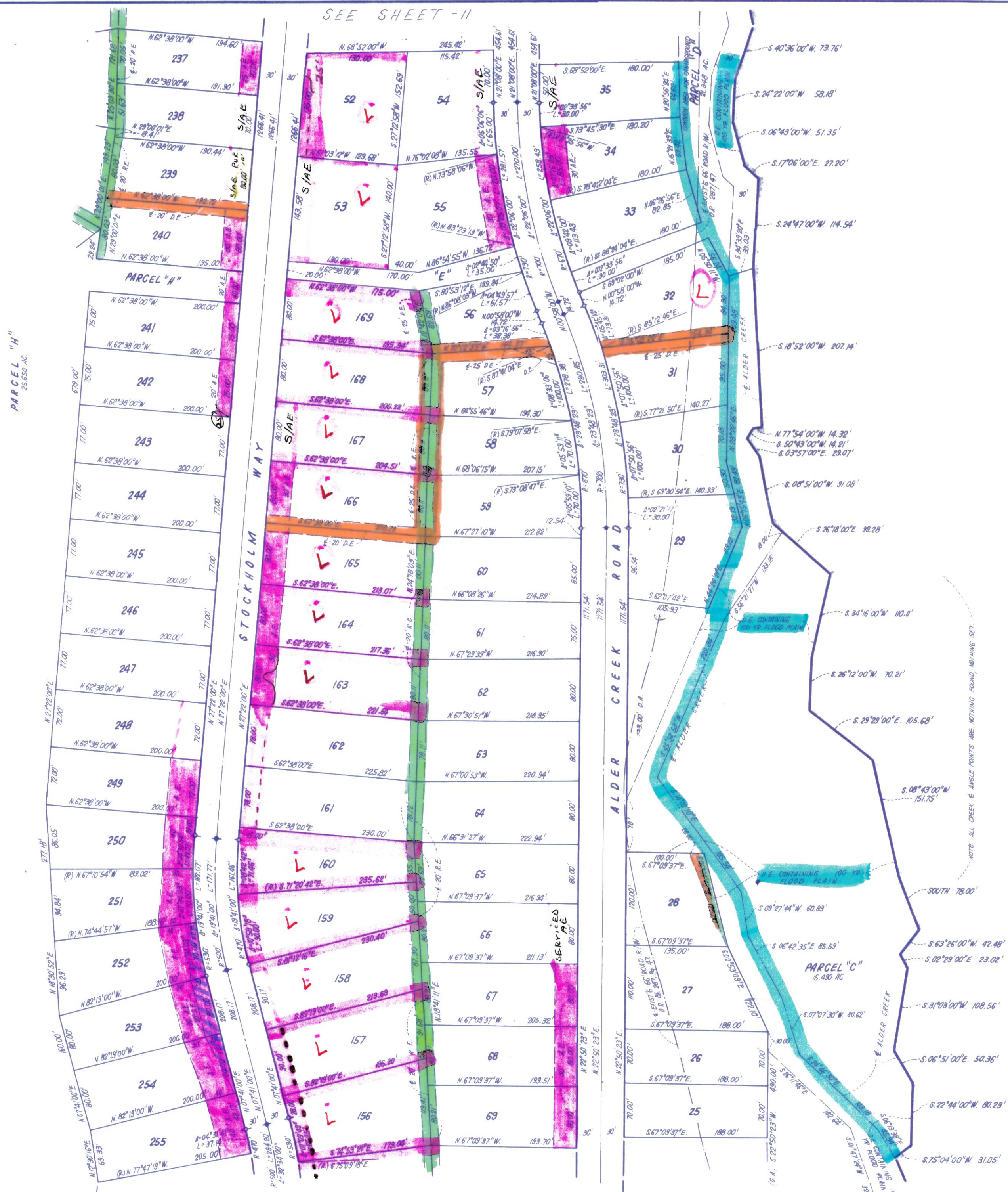
- NOTES:
1. 3/4" ROD SET AT ALL EXTERIOR ANGLE POINTS, TAGGED R.C.E. 13308
 2. 3/4" ROD SET AT ALL INTERIOR LOT CORNERS & ANGLE POINTS, TAGGED R.C.E. 13309
 3. BASIS OF BEARINGS AS SHOWN ON SHEET 1 OF 12 SHEETS.
 4. N.A.P.O.T.S.: NOT A PART OF THIS SUBDIVISION.
 5. SET 2" PIPE, TAGGED R.C.E. 13309
 6. INDICATES UNSET CURVE POINT
 7. SET RAILROAD SPIKE AFTER PAVING
 8. INDICATES 3/4" ROD SET ON CURVE POINT, TAGGED R.C.E. 13309

NOTE: PROCEEDINGS HAVE BEEN INITIATED FOR THE ABANDONMENT OF THAT CERTAIN ROAD R/W RECORDED IN OFFICIAL RECORDS, BK. 287, P. 47, NEVADA COUNTY, CALIFORNIA

SEE SHEET -10

SEE SHEET -8

PARCEL "H"
25.650 AC.



SEE SHEET -11

SEE SHEET -6