

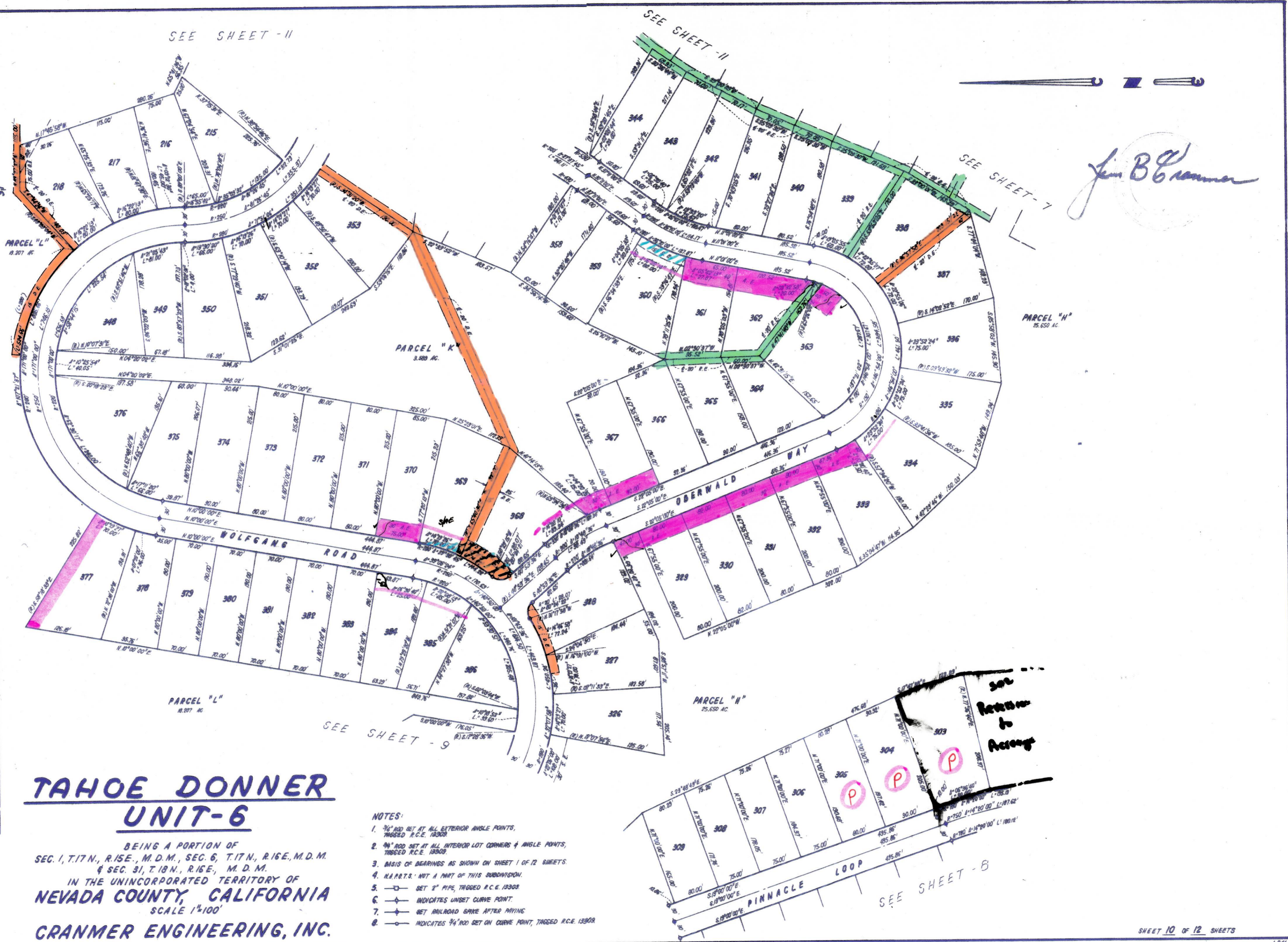
SEE SHEET - 11

SEE SHEET - 11

SEE SHEET - 7

*Jim B. Cranmer*

U. S. A.  
P.P. 100 200 300 400  
Kilometers  
1:62,500  
N. 87° 59' 06" E



# TAHOE DONNER UNIT-6

BEING A PORTION OF  
 SEC. 1, T. 17 N., R. 15 E., M. D. M., SEC. 6, T. 17 N., R. 16 E., M. D. M.  
 & SEC. 31, T. 18 N., R. 16 E., M. D. M.  
 IN THE UNINCORPORATED TERRITORY OF  
**NEVADA COUNTY, CALIFORNIA**  
 SCALE 1"=100'  
**CRANMER ENGINEERING, INC.**

- NOTES:
- 3/4" ROD SET AT ALL EXTERIOR ANGLE POINTS, TAGGED R.C.E. 1330A
  - 3/4" ROD SET AT ALL INTERIOR LOT CORNERS & ANGLE POINTS, TAGGED R.C.E. 1330B
  - BASIS OF BEARINGS AS SHOWN ON SHEET 1 OF 12 SHEETS
  - N.A.P.T.S. NOT A PART OF THIS SUBDIVISION
  - SET 2" PIPE, TAGGED R.C.E. 1330C
  - INDICATES UNSET CURVE POINT
  - SET RAILROAD SPINE AFTER PAVING
  - INDICATES 3/4" ROD SET ON CURVE POINT, TAGGED R.C.E. 1330A

see Return to Agency

SEE SHEET - 8

UNIT 6 - 10