

SEE SHEET - 12

- NOTES:
1. 3/4" ROD SET AT ALL EXTERIOR ANGLE POINTS, TAGGED R.C.E. 13309
 2. 3/4" ROD SET AT ALL INTERIOR LOT CORNERS & ANGLE POINTS, TAGGED R.C.E. 13309
 3. BASIS OF BEARINGS AS SHOWN ON SHEET 1 OF 12 SHEETS
 4. N.A.P.O.T.S.: NOT A PART OF THIS SUBDIVISION
 5. SET 2" PIPE, TAGGED R.C.E. 13309
 6. INDICATES UNSET CURVE POINT
 7. SET RAILROAD SPIKE AFTER PAVING
 8. INDICATES 3/4" ROD SET ON CURVE POINT, TAGGED R.C.E. 13309

NOTE: PROCEEDINGS HAVE BEEN INITIATED FOR THE ABANDONMENT OF THAT CERTAIN ROAD R.W. RECORDED IN OFFICIAL RECORDS, 287, AT P. 34, 35, 36, 37, NEVADA COUNTY, CALIFORNIA.

NAPOTS
U.S.A.
O.P. 34, 35, 36, 37, 38, 39, 40, 41.

L. Branner

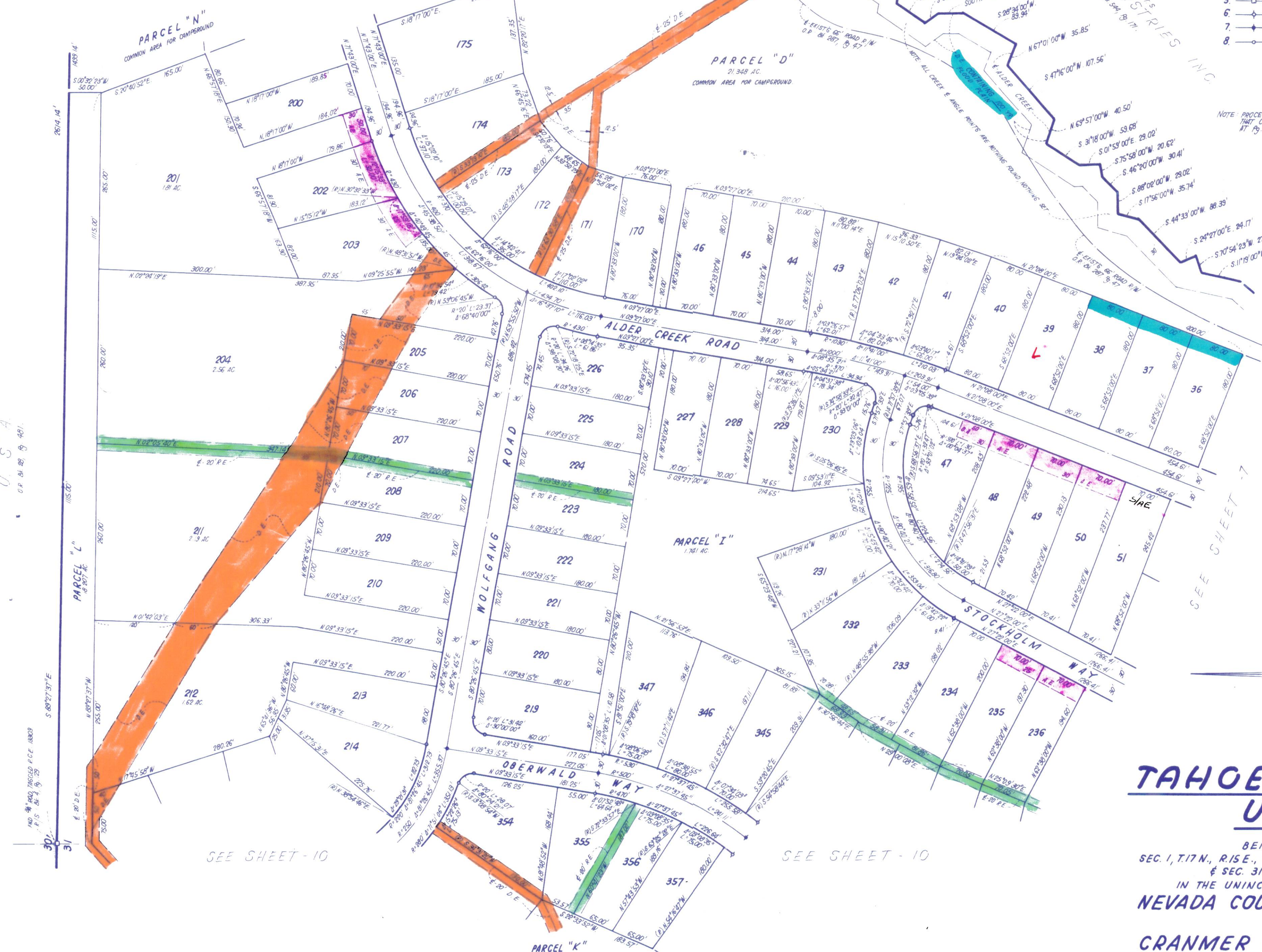
TAHOE DONNER UNIT-6

BEING A PORTION OF
SEC. 1, T.17N., R.15E., M.D.M., SEC. 6, T.17N., R.16E., M.D.M.
& SEC. 31, T.18N., R.16E., M.D.M.
IN THE UNINCORPORATED TERRITORY OF
NEVADA COUNTY, CALIFORNIA
SCALE 1"=100'

CRANMER ENGINEERING, INC.

SHEET 11 OF 12 SHEETS

UNIT 6 - 11



SEE SHEET - 10

SEE SHEET - 10

SEE SHEET - 7