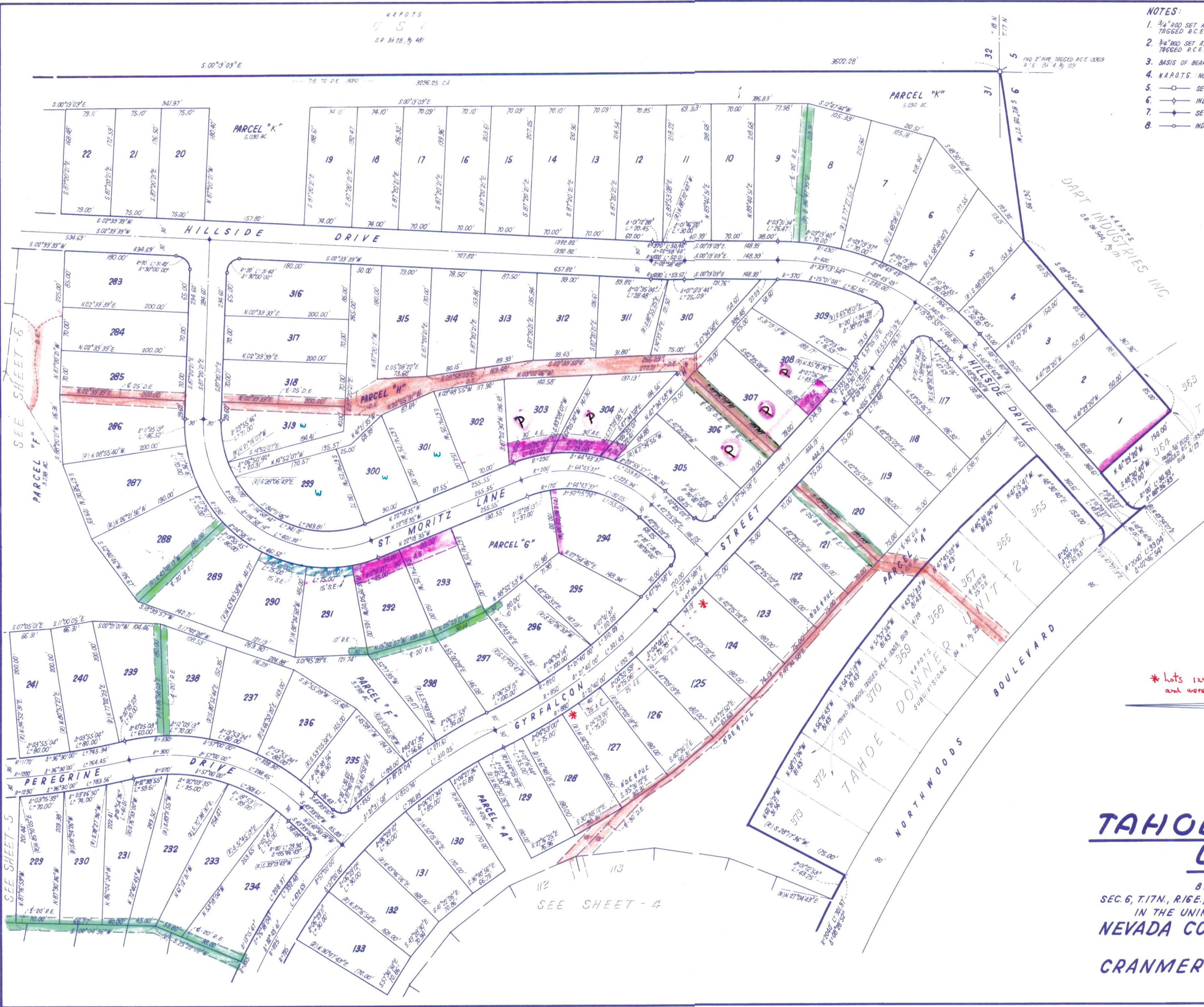


N.A.P.O.T.S.
U.S.A.
D.P. 84.28, Pg. 481

- NOTES:**
- 3/4" ROD SET AT ALL EXTERIOR ANGLE POINTS, TAGGED R.C.E. 13309
 - 3/4" ROD SET AT ALL INTERIOR LOT CORNERS & ANGLE POINTS, TAGGED R.C.E. 13309
 - BASIS OF BEARINGS AS SHOWN ON SHEET 1 OF 7 SHEETS
 - N.A.P.O.T.S. NOT A PART OF THIS SUBDIVISION
 - SET 2" PIPE, TAGGED R.C.E. 13309
 - INDICATES UNSET CURVE POINT
 - SET RAILROAD SPIKE AFTER PAVING
 - INDICATES 3/4" ROD SET ON CURVE POINT, TAGGED R.C.E. 13309



N.A.P.O.T.S.
TAHOE DONNER
UNIT-2
SUBDIVISIONS BE. 4, Pg. 23

[Handwritten signature]

* lots 124-127 Do not need AE and were sold on the basis.

TAHOE DONNER UNIT-7

BEING A PORTION OF
SEC. 6, T.17N., R.16E., M. D. M. & SEC. 31, T.18N., R.16E., M. D. M.
IN THE UNINCORPORATED TERRITORY OF
NEVADA COUNTY, CALIFORNIA
SCALE 1"=100'

CRANMER ENGINEERING, INC.

SEE SHEET-5

SEE SHEET-4