

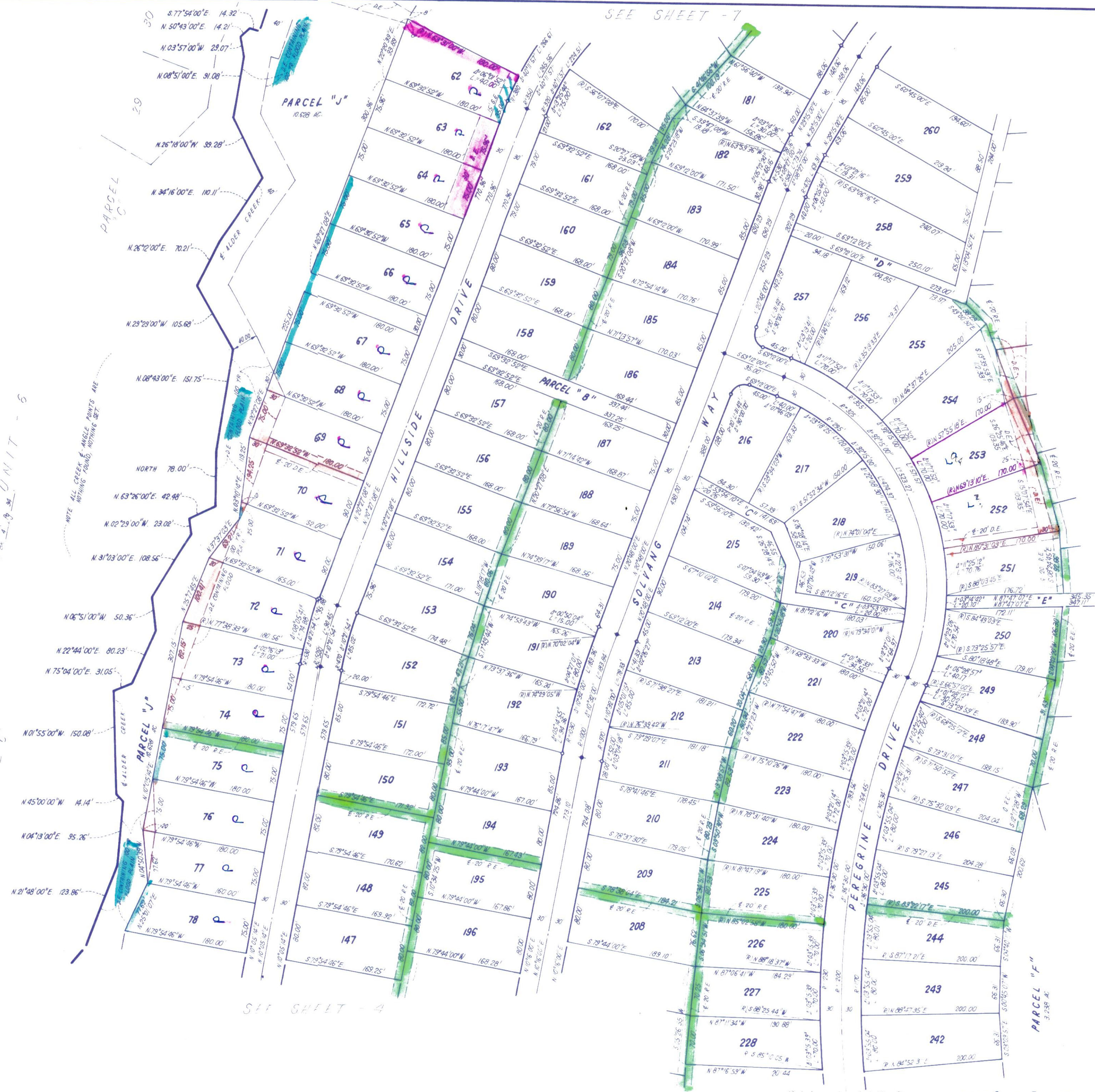
TAHOE DONNER UNIT-7

BEING A PORTION OF
SEC. 6, T.17N., R.16E., M.D.M. & SEC. 31, T.18N., R.16E., M.D.M.
IN THE UNINCORPORATED TERRITORY OF
NEVADA COUNTY, CALIFORNIA
SCALE 1"=100'
CRANMER ENGINEERING, INC.



- NOTES:**
1. 3/4" ROD SET AT ALL EXTERIOR ANGLE POINTS, TAGGED R.C.E. 13309.
 2. 3/4" ROD SET AT ALL INTERIOR LOT CORNERS & ANGLE POINTS, TAGGED R.C.E. 13309.
 3. BASIS OF BEARINGS AS SHOWN ON SHEET 1 OF 7 SHEETS.
 4. N.A.P.O.T.S.: NOT A PART OF THIS SUBDIVISION.
 5. SET 2" PIPE, TAGGED R.C.E. 13309.
 6. INDICATES UNSET CURVE POINT.
 7. SET RAILROAD SPIKE AFTER PAVING.
 8. INDICATES 3/4" ROD SET ON CURVE POINT, TAGGED R.C.E. 13309.

TAHOE DONNER SUBDIVISIONS ARE A PART OF UNIT - 5



SEE SHEET - 7

SEE SHEET - 4

SEE SHEET - 6