

TAHOE DONNER UNIT-7

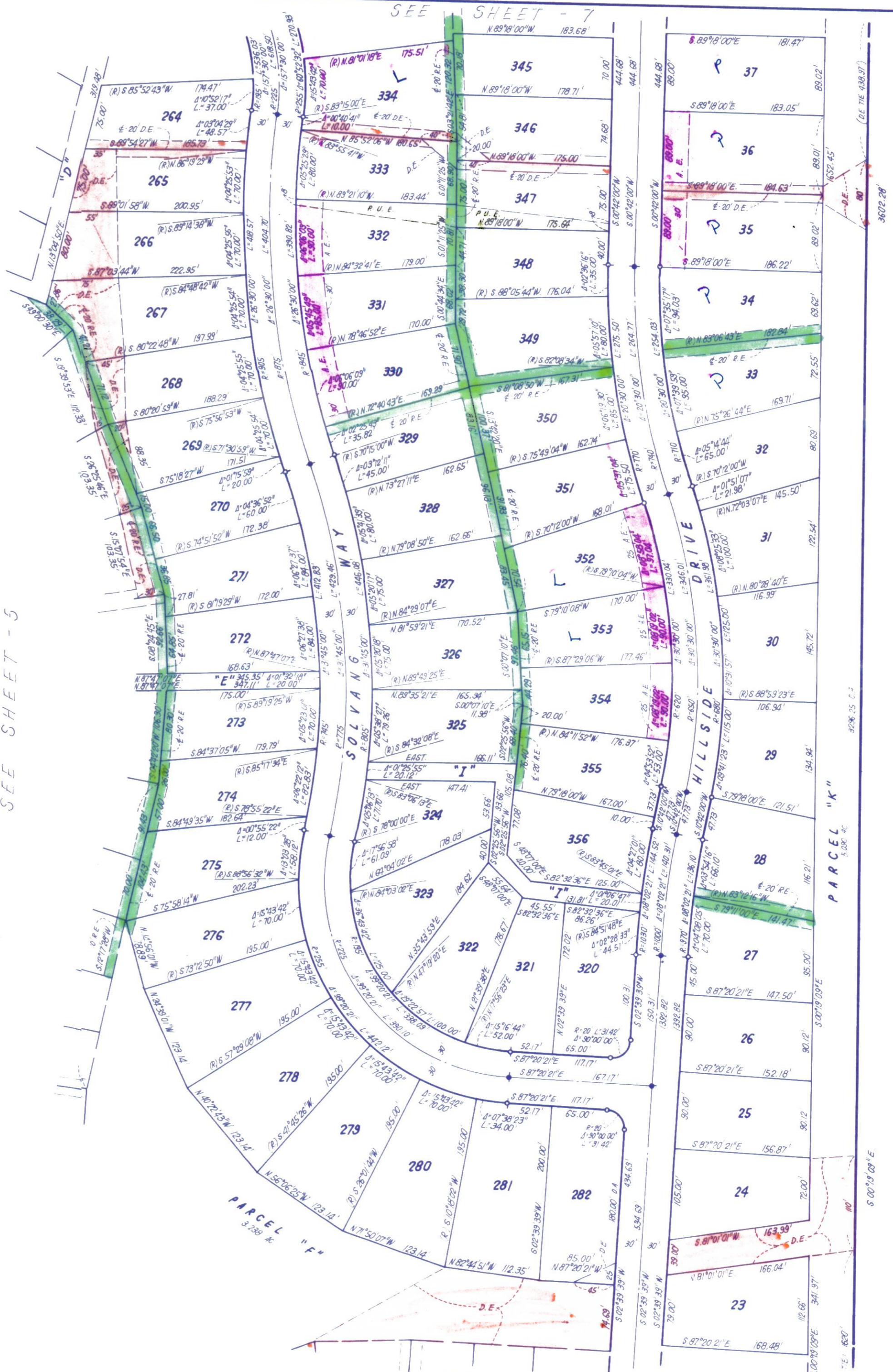
BEING A PORTION OF
SEC. 6, T.17N., R.16E., M. D. M. & SEC. 31, T.18N., R.16E., M.D.M.
IN THE UNINCORPORATED TERRITORY OF
NEVADA COUNTY, CALIFORNIA
SCALE 1"=100'
CRANMER ENGINEERING, INC.

NOTES:

1. 3/4" ROD SET AT ALL EXTERIOR ANGLE POINTS, TAGGED R.C.E. 13309
2. 3/4" ROD SET AT ALL INTERIOR LOT CORNERS & ANGLE POINTS, TAGGED R.C.E. 13308
3. BASIS OF BEARINGS AS SHOWN ON SHEET 1 OF 7 SHEETS
4. N.A.P.T.S. NOT A PART OF THIS SUBDIVISION
5. SET 2" PIPE, TAGGED R.C.E. 13309
6. INDICATES UNSET CURVE POINT
7. SET RAILROAD SPIKE AFTER PAVING
8. INDICATES 3/4" ROD SET ON CURVE POINT, TAGGED R.C.E. 13309



SEE SHEET - 5



SEE SHEET - 7

SEE SHEET - 3