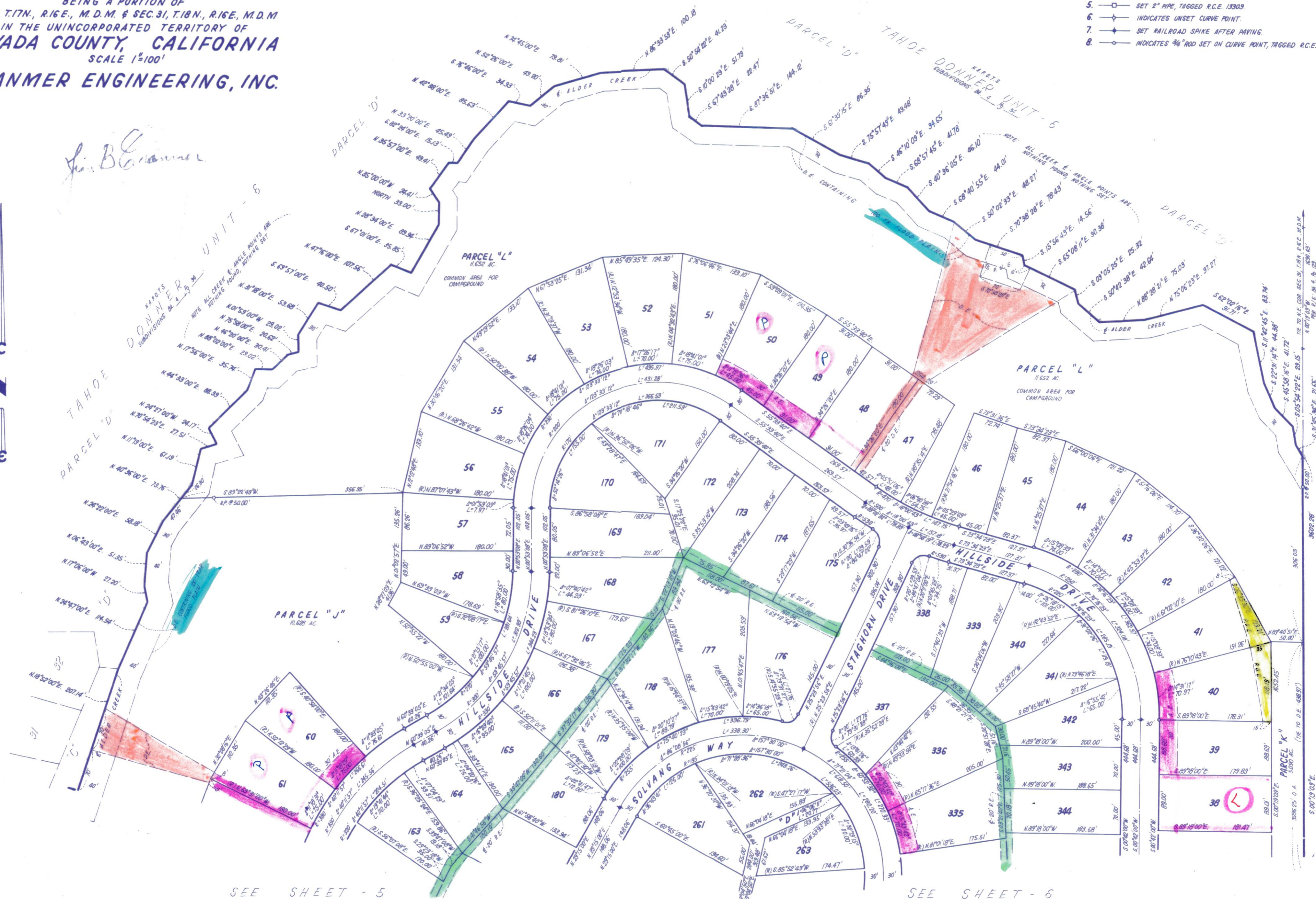


TAHOE DONNER UNIT-7

BEING A PORTION OF
SEC. 6, T.17N., R.16E., M.D.M. & SEC. 31, T.18N., R.16E., M.D.M.
IN THE UNINCORPORATED TERRITORY OF
NEVADA COUNTY, CALIFORNIA
SCALE 1"=100'
CRANMER ENGINEERING, INC.

Jim B. Cranmer

- NOTES:**
1. 3/4" ROD SET AT ALL EXTERIOR ANGLE POINTS, TAGGED R.C.E. 13303
 2. 3/4" ROD SET AT ALL INTERIOR LOT CORNERS & ANGLE POINTS, TAGGED R.C.E. 13303
 3. BASIS OF BEARINGS AS SHOWN ON SHEET 1 OF 7 SHEETS
 4. N.A.P.O.T.S.: NOT A PART OF THIS SUBDIVISION
 5. □ SET 2" PIPE, TAGGED R.C.E. 13303
 6. ◆ INDICATES UNSET CURVE POINT
 7. ◆ SET RAILROAD SPIKE AFTER PAVING
 8. ○ INDICATES 3/4" ROD SET ON CURVE POINT, TAGGED R.C.E. 13303



SEE SHEET - 5

SEE SHEET - 6

SHEET 7 OF 7 SHEETS

U.S.A.
D.P. 04-28 (8-49)