

TAHOE DONNER UNIT-8

BEING A PORTION OF
SECTION 4 & 9, T.17N, R.16E, M.D.M.
IN THE UNINCORPORATED TERRITORY OF
NEVADA COUNTY, CALIFORNIA
SCALE 1"=100'
CRANMER ENGINEERING, INC.

N.A.P.O.T.S.
D.W. JACOBS
O.R. BK. 591, P. 671.

N.A.P.O.T.S.
H.K. JACOBS
O.R. BK. 591, P. 672.

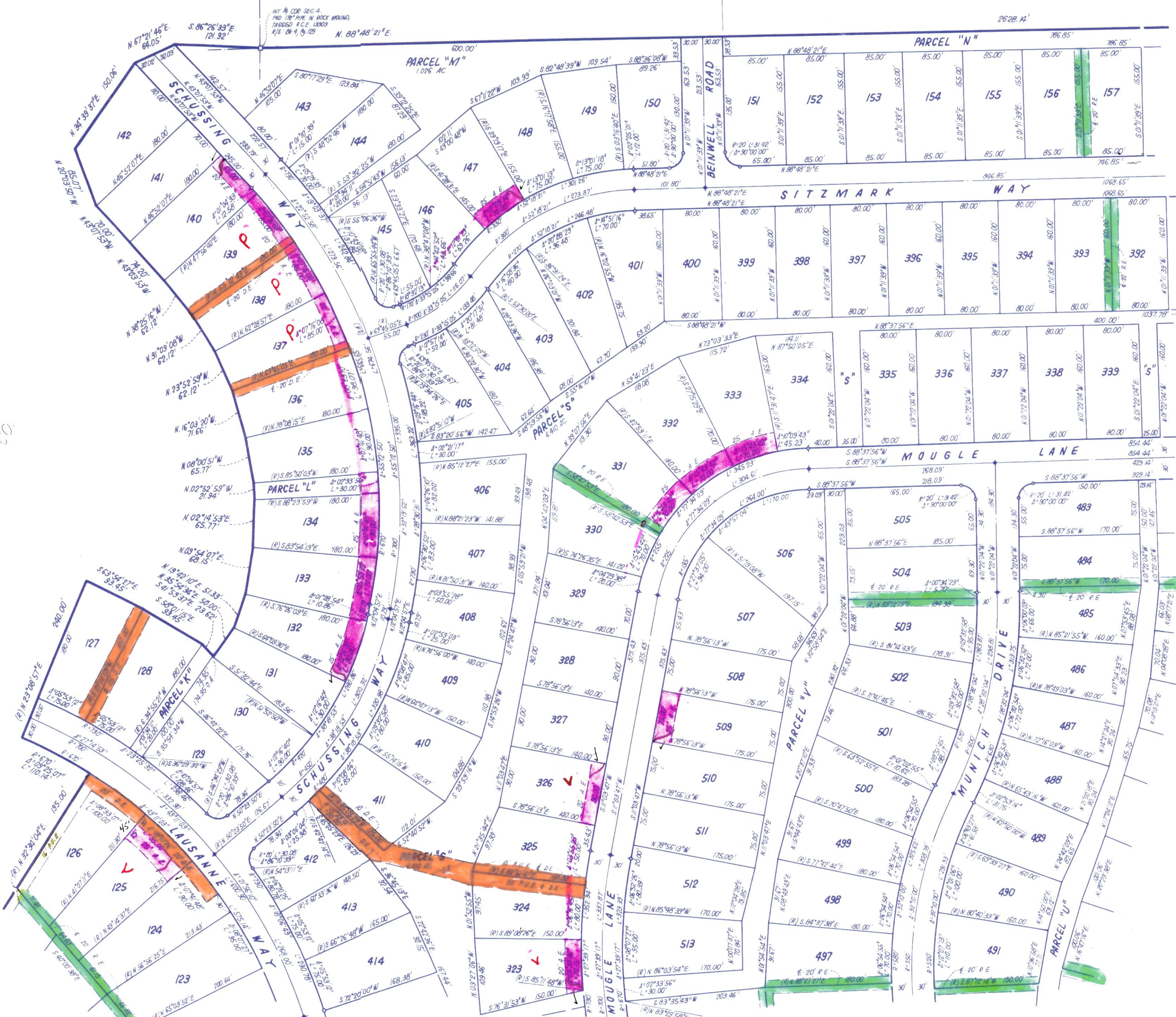
NOTES:

- 3/4" ROD SET AT ALL EXTERIOR ANGLE POINTS, TAGGED R.C.E. 13309, EXCEPT AS NOTED.
- 3/4" ROD SET AT ALL INTERIOR LOT CORNERS & ANGLE POINTS, TAGGED R.C.E. 13303.
- BASIS OF BEARINGS AS SHOWN ON SHEET 1 OF 10 SHEETS.
- N.A.P.O.T.S.: NOT A PART OF THIS SUBDIVISION.
- SET 2" PIPE, TAGGED R.C.E. 13309.
- INDICATES UNSET CURVE POINT.
- SET RAILROAD SPIKE AFTER PAVING.
- INDICATES 3/4" ROD SET ON CURVE POINT, TAGGED R.C.E. 13303.

WESTERN TITLE INSURANCE CO.
N.A.P.O.T.S.
O.R. BK. 591, P. 671.



Handwritten signature: J. B. Cranmer



SEE SHEET - 5

SHEET 6 OF 10 SHEETS

UNIT 8 - 6

SEE SHEET - 7