

# TAHOE DONNER UNIT-8

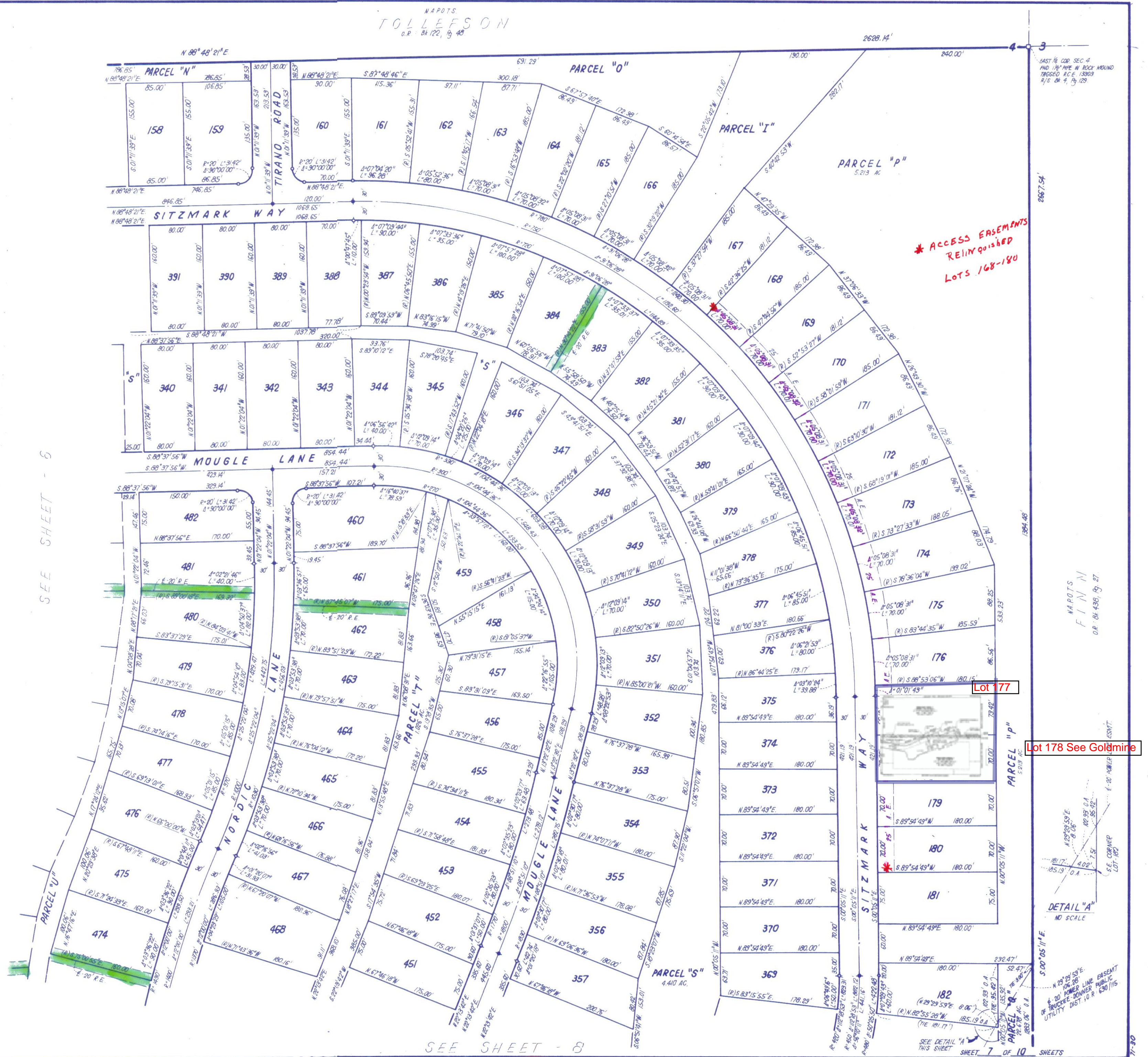
BEING A PORTION OF  
SECTION 4 & 9, T17N, R16E, M.D.M.  
IN THE UNINCORPORATED TERRITORY OF  
**NEVADA COUNTY, CALIFORNIA**  
SCALE 1"=100'  
**CRANMER ENGINEERING, INC.**

**NOTES:**

- 3/4" ROD SET AT ALL EXTERIOR ANGLE POINTS, TAGGED R.C.E. 13309 EXCEPT AS NOTED.
- 3/4" ROD SET AT ALL INTERIOR LOT CORNERS & ANGLE POINTS, TAGGED R.C.E. 13309.
- BASIS OF BEARINGS AS SHOWN ON SHEET 1 OF 10 SHEETS.
- NAPOTS NOT A PART OF THIS SUBDIVISION.
- SET 2" PIPE, TAGGED R.C.E. 13309.
- ◇ INDICATES UNSET CURVE POINT.
- ◆— SET RAILROAD SPIKE AFTER PAVING.
- INDICATES 3/4" ROD SET ON CURVE POINT, TAGGED R.C.E. 13309.



*Lib Blanner*



SEE SHEET - 5

SEE SHEET - 8

UNIT 8 - 7