

TAHOE DONNER UNIT-8

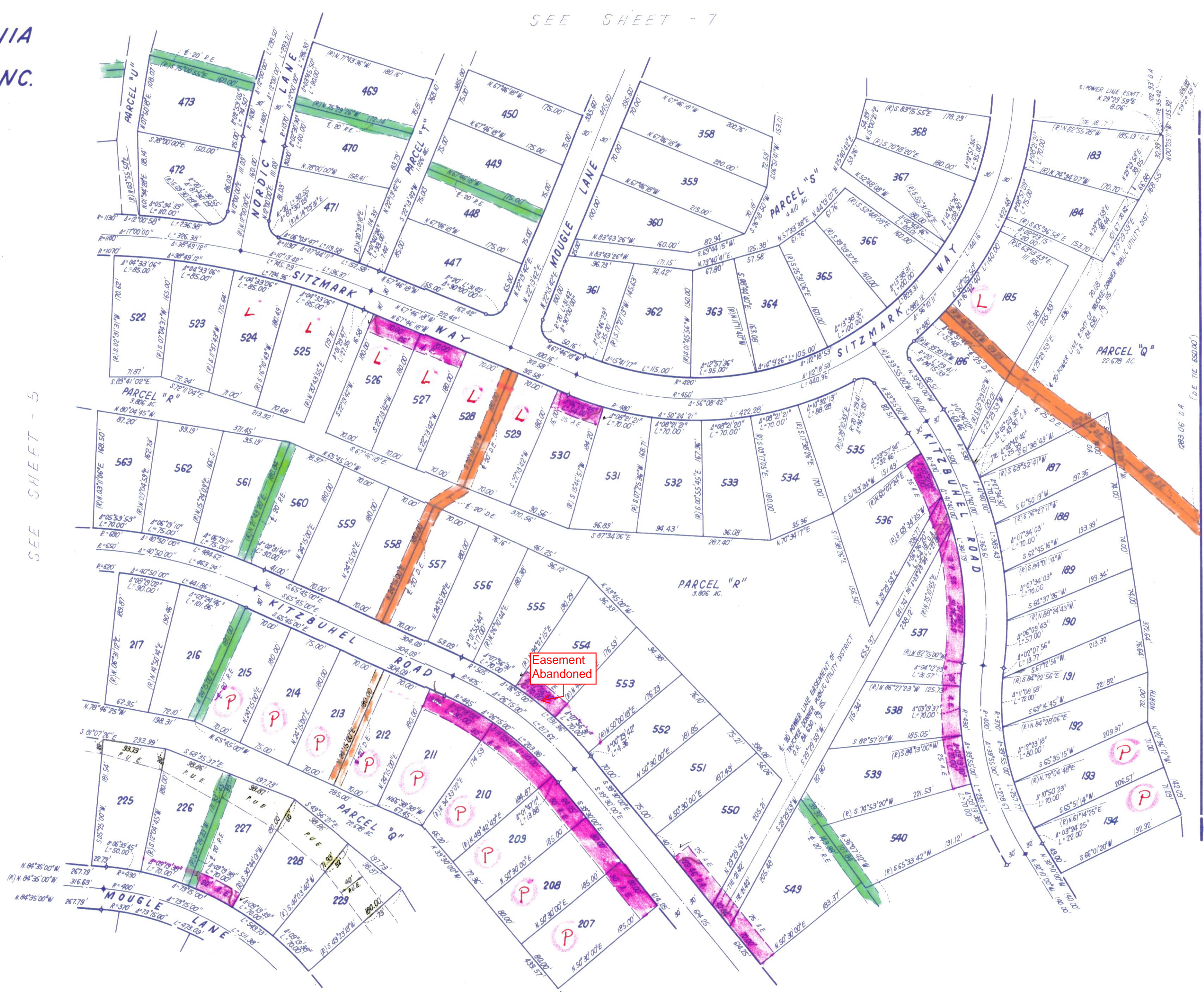
BEING A PORTION OF
SECTION 4 & 9, T.17N, R.16E, M.D.M.
IN THE UNINCORPORATED TERRITORY OF
NEVADA COUNTY, CALIFORNIA
SCALE 1"=100'
CRANMER ENGINEERING, INC.

NOTES:

1. 3/4" ROD SET AT ALL EXTERIOR ANGLE POINTS, TAGGED R.C.E. 13309, EXCEPT AS NOTED.
2. 3/4" ROD SET AT ALL INTERIOR LOT CORNERS & ANGLE POINTS, TAGGED R.C.E. 13300.
3. BASIS OF BEARINGS AS SHOWN ON SHEET 1 OF 10 SHEETS.
4. N.A.P.O.T.S.: NOT A PART OF THIS SUBDIVISION.
5. SET 2" PIPE, TAGGED R.C.E. 13309.
6. INDICATES UNSET CURVE POINT.
7. SET RAILROAD SPIKE AFTER PAVING.
8. INDICATES 3/4" ROD SET ON CURVE POINT, TAGGED R.C.E. 13309.

C
N
E

Jim Boranna



SEE SHEET - 7

SEE SHEET - 5

SEE SHEET - 9

SHEET 8 OF 10 SHEETS

UNIT 8-8

2087.54

2083.05 0.0 A (D.E. TIE 8500.0)

N.A.P.O.T.S. FIN N O.P. 04-438, 89, 97

5000.05 11' E.

L.S.M.

FD-8