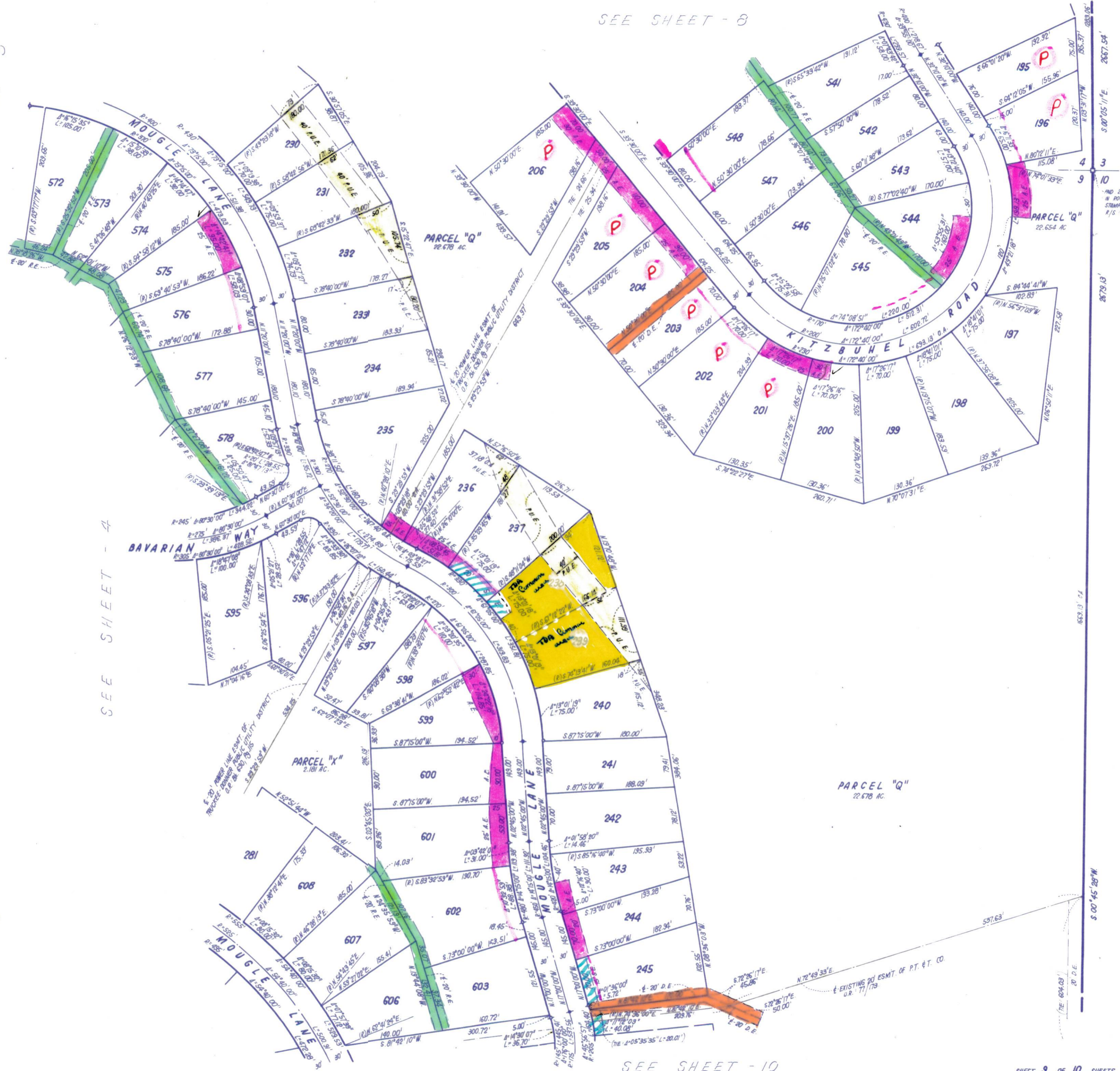


SEE SHEET - 8

SEE SHEET - 5



- NOTES:
1. 3/4" ROD SET AT ALL EXTERIOR ANGLE POINTS, TAGGED R.C.E. 13303, EXCEPT AS NOTED.
  2. 3/4" ROD SET AT ALL INTERIOR LOT CORNERS & ANGLE POINTS, TAGGED R.C.E. 13303.
  3. BASIS OF BEARINGS AS SHOWN ON SHEET 1 OF 10 SHEETS.
  4. N.A.P.O.T.S.: NOT A PART OF THIS SUBDIVISION.
  5.  $\square$  SET 2" PIPE, TAGGED R.C.E. 13303.
  6.  $\diamond$  INDICATES UNSET CURVE POINT.
  7.  $\blacklozenge$  SET RAILROAD SPIKE AFTER PAVING.
  8.  $\circ$  INDICATES 3/4" ROD SET ON CURVE POINT, TAGGED R.C.E. 13303.

# TAHOE DONNER UNIT-8

BEING A PORTION OF SECTION 4 & 9, T.17N, R.16E, M.D.M. IN THE UNINCORPORATED TERRITORY OF NEVADA COUNTY, CALIFORNIA  
 SCALE 1"=100'  
 CRANMER ENGINEERING, INC.

SEE SHEET - 10

SHEET 9 OF 10 SHEETS

# UNIT 8-9

N.A.P.O.T.S. FIN IN U.P. BK 438 P. 27

N.A.P.O.T.S. U.S.A. (UNPATENTED)

L.G.W.

F9-8